



2nd Month Rent FREE

Moorland Green, Chopwell, NE17

£1,000 Per Month

* Rent Free on the 2nd Month *

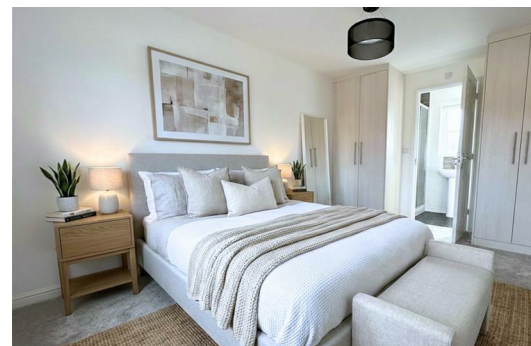
This exceptional incentive lets you enjoy significant savings while settling into your new home.

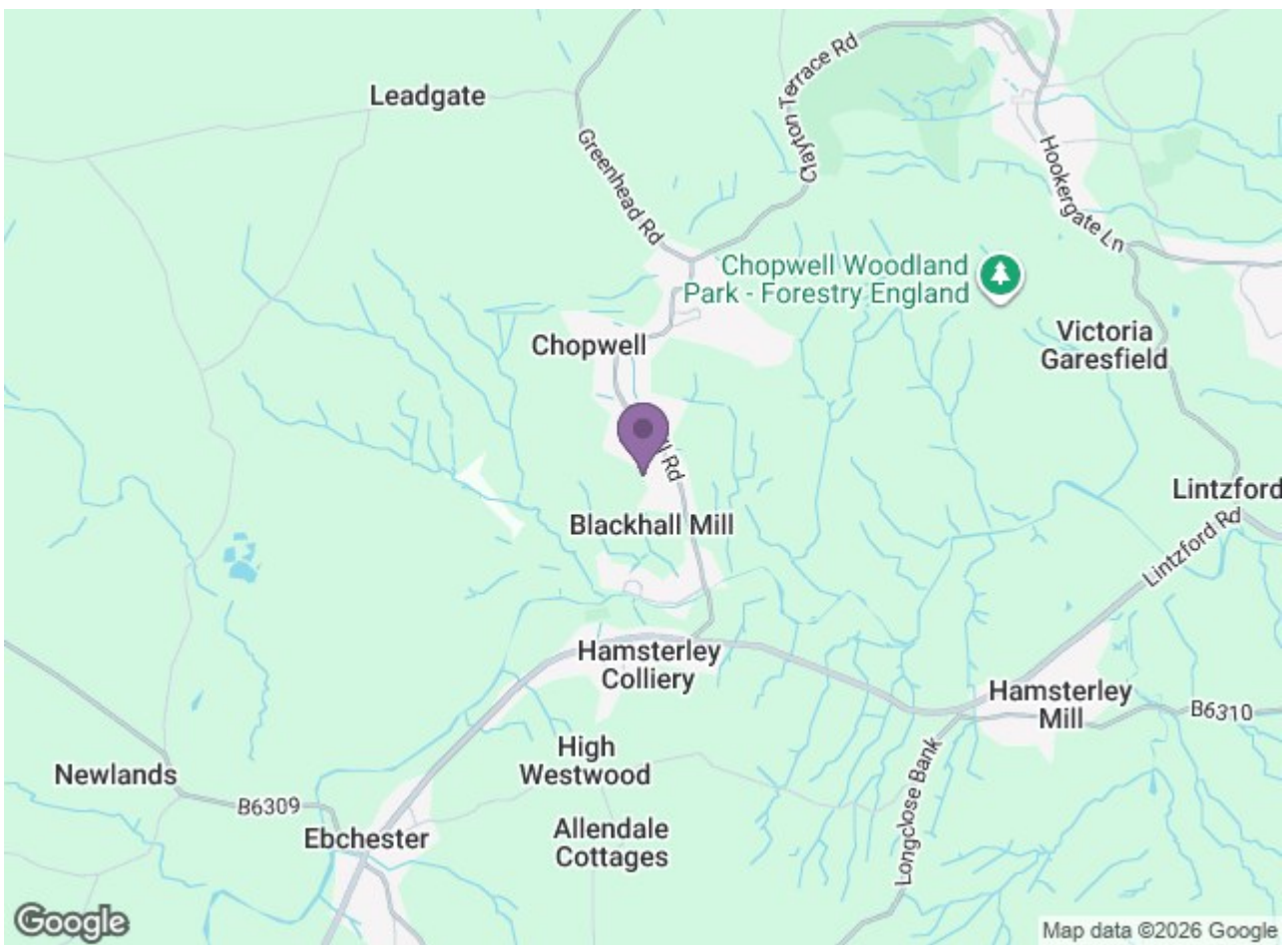
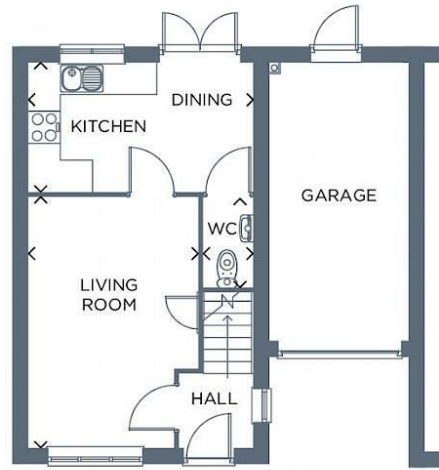
BRAND NEW HOMES TO RENT. Be the first to call Moorland Green home.

Moorland Green is a stunning collection of 2, 3 and 4 bedroom homes to rent in the semi-rural village of Chopwell, Gateshead. Surrounded by countryside and local amenities, this well-connected former mining village is just a short drive from the Metrocentre, Ryton and Newcastle.

Everything you need is close by, from local convenience stores to takeaways and a pet shop, all within walking distance. Larger supermarkets such as Morrisons and Asda are just a short drive away. Plus there is a regular bus service connects the village to Blackhall Mill and Newcastle making commuting and days out simple.

Nature lovers will enjoy being just a short walk from Chopwell Wood—Tyne and Wear's largest woodland, offering nearly 900 acres of walking trails, bike routes and scenic spots. Families are well catered for too, with Chopwell Primary School within walking distance, and a wide choice of nurseries, primary schools and secondary schools nearby. And for those in the know, Riverview Bakery is just a 10-minute stroll from the development, home of the much-loved





Energy Efficiency Rating		Environmental Impact (CO ₂) Rating	
Band	Score	Band	Score
A	92-100	A	1-23
B	81-91	B	24-37
C	69-80	C	38-50
D	55-68	D	51-62
E	39-54	E	63-75
F	13-38	F	76-90
G	1-12	G	91-100

Energy Efficiency Rating: **B** (Score: 85)

Environmental Impact (CO₂) Rating: **D** (Score: 53)

England & Wales