



Ringwood Drive, North Baddesley

Connells SIGNATURE



Ringwood Drive, North Baddesley

Entrance Hall

A welcoming introduction to the home, featuring wood laminate flooring and a UPVC front door. Stairs rise to the first floor with access to the principal living accommodation.

Cloakroom

Conveniently located on the ground floor and fitted with a WC and hand wash basin with localised tiling.

Lounge

A comfortable reception room with attractive exposed brickwork and a gas fireplace creating a warm focal point. The room benefits from wood laminate flooring, radiator and TV point, offering a pleasant space for relaxation.

Kitchen Diner

A well-appointed kitchen dining space fitted with a range of wall and base units with roll-top work surfaces. Integrated electric oven, four-ring gas hob with extractor above, stainless steel sink with mixer tap and space for a washing machine, tumble dryer and tall fridge freezer. Two built-in cupboards provide excellent storage. The dining area enjoys a rear aspect with French doors opening onto the garden, creating an ideal space for entertaining and everyday family living.

Principle Bedroom

A generous double bedroom positioned to the front of the property, enjoying far-reaching views across nearby woodland. Finished with carpeted flooring and radiator.

Bedroom Two

A comfortable bedroom with a rear aspect window overlooking the garden. The room is laid to carpet and benefits from a radiator, with slightly reduced head height adding character.

Bedroom Three

A versatile third bedroom with rear aspect double-glazed window and carpeted flooring, suitable as a bedroom, nursery or home office.

Bathroom

A modern bathroom installed in 2020, fitted with a WC, hand wash basin and extractor fan, with a double-glazed window to the side.

Loft Room

Accessed via a drop-down ladder from the landing, the loft space is fully insulated and fitted with laminate flooring, Velux window and handrail. Currently used as a practical storage and hobby space, it offers excellent potential for conversion into additional accommodation subject to the necessary planning permissions.

Front and Rear Garden

The property is attractively elevated from the road and approached via a block-paved driveway providing parking for multiple vehicles. A lawn front garden with mature shrubs and borders complements the setting, alongside a dropped kerb for ease of access.

Rear Garden

The landscaped rear garden provides a





private outdoor retreat with a patio seating area, raised beds and enclosed fencing. There is a side access gate, external water point and a garden shed with lighting powered by a solar panel. Two protected TPO trees add maturity and character to the garden.

Garage/ outbuilding

The garage has been partially converted and features a pitched roof, electrics, side window, rear access door and two Velux windows. This flexible space lends itself to a variety of uses including a home office, studio, games room or potential annex accommodation, subject to planning.

Agent Notes

Tenure: Freehold

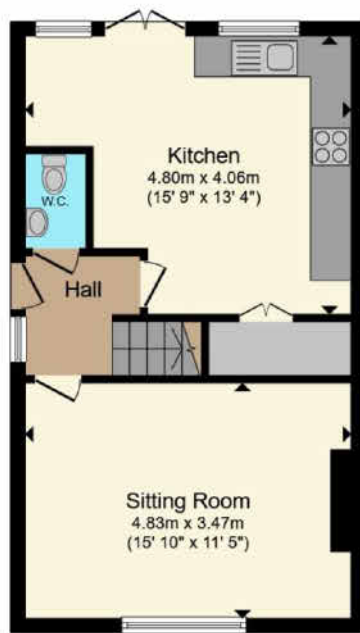
EPC Rating: E
Council Tax Band: D
Approximate Floor Area: 840 sq ft
Loft and garage conversion potential subject to the usual planning permissions and building regulations.

Location

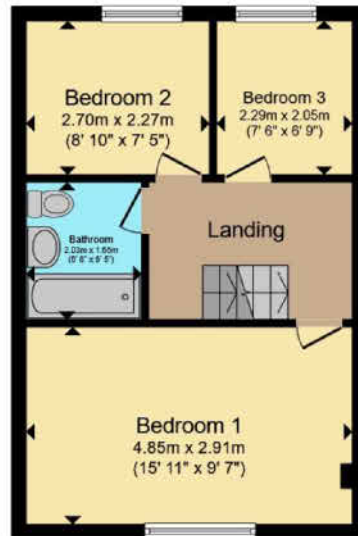
North Baddesley is a well-regarded village situated just outside the historic market town of Romsey, offering a strong community atmosphere alongside excellent amenities.

The area is well served by local schooling including North Baddesley Infant School, North Baddesley Junior School and The Mountbatten School in nearby Romsey. Romsey itself provides a charming town centre with independent shops, cafés, restaurants and supermarkets, as well as

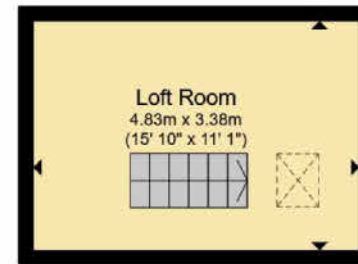
leisure and recreational facilities. For commuters, convenient access is available to the M27 and M3 motorway networks, providing routes to Southampton, Winchester and beyond. Romsey railway station offers regular services to Southampton, Salisbury and onward connections to London. Southampton Airport is also within easy reach. Surrounding countryside, woodland walks and nearby green spaces further enhance the appeal of this attractive village location.



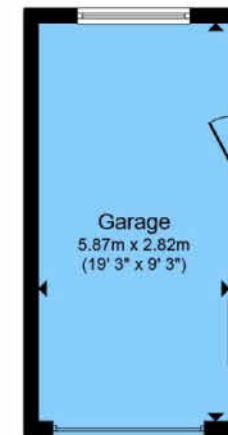
Ground Floor



First Floor



Second Floor



Garage

Total floor area 109.5 m² (1,179 sq.ft.) approx

This floor plan is for illustrative purposes only. It is not drawn to scale. Any measurements, floor areas (including any total floor area), openings and orientation are approximate. No details are guaranteed, they cannot be relied upon for any purpose and they do not form part of any agreement. No liability is taken for any error, omission or misstatement. A party must rely upon its own inspection(s). Powered by www.propertybox.io

Connells

Connells

SIGNATURE

Ringwood Drive, North Baddesley

Occupying an elevated position within this established residential setting, this attractive three-bedroom semi-detached home enjoys wonderful far-reaching views towards surrounding woodland and countryside. Built in the 1970s and extending to approximately 840 sq ft, the property is presented in good order throughout and offers well-balanced accommodation with further potential.

The welcoming entrance hall leads to a comfortable sitting room featuring exposed brickwork and a gas fireplace, creating a warm and characterful focal point. To the rear, the well-appointed kitchen dining room provides an excellent family space with French doors.

Guide Price

£400,000

EPC Rating: C

Council Tax Band: D

Tenure: Freehold



Connells SIGNATURE

To view this property please contact us on

01794 830 833

or email romsey@connells.co.uk

13a The Hundred, Romsey, Hampshire SO51 8GD

CONNELLS.CO.UK

1. MONEY LAUNDERING REGULATIONS Intending purchasers will be asked to produce identification documentation at a later stage and we would ask for your co-operation in order that there is no delay in agreeing the sale. 2. These particulars do not constitute part or all of an offer or contract. 3. The measurements indicated are supplied for guidance only and as such must be considered incorrect. Potential buyers are advised to recheck measurements before committing to any expense. 4. We have not tested any apparatus, equipment, fixtures or services and it is in the buyers interest to check the working condition of any appliances. 5. Where an EPC, or a Home Report (Scotland only) is held for this property, it is available for inspection at the branch by appointment. If you require a printed version of a Home Report, you will need to pay a reasonable production charge reflecting printing and other costs. 6. We are not able to offer an opinion either written or verbal on the content of these reports and this must be obtained from your legal representative. 7. Whilst we take care in preparing these reports, a buyer should ensure that his/her legal representative confirms as soon as possible all matters relating to title including the extent and boundaries of the property and other important matters before exchange of contracts.

