



TRESSILLIAN ROAD, SE4

£500,000

Two bedroom apartment

Sole use of garden

Private entrance

Close to hilly fields

Conservation area

Energy rating: d

@marshandparsons
marshandparsons.co.uk

MARSH &
PARSONS



ABOUT THE PROPERTY

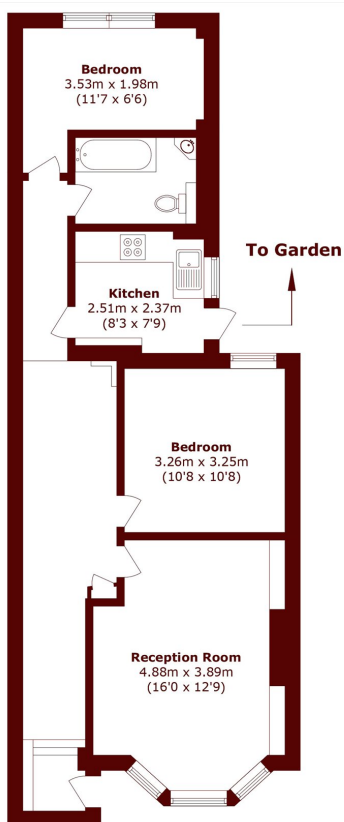
A beautifully presented two double bedroom ground floor apartment with sole use of good size rear garden.

The property is located in the Brockley Conservation Area and found moments from the popular wide open green spaces of Hilly Fields.

The busy commuter will find the choice Brockley Station for The Overground and Crofton Park for City Thameslink.



STEP INSIDE TRESSILLIAN ROAD



Total area (approx.): 64.5 sq. m (694.2 sq. ft)

Brockley
020 8629 8164

Energy Rating: D We aim to make our particulars both accurate and reliable. However, they are not guaranteed; nor do they form part of an offer or contract. If you require clarification on any points then please contact us, especially if you're traveling some distance to view. Please note that appliances and heating systems have not been tested and therefore no warranties can be given as to their good working order

**MARSH &
PARSONS**