



## 9 Millbank, London, SW1P

£6,850 pcm

- 6<sup>th</sup> floor apartment
- Two large bedrooms
- Two bathrooms (one en-suite)
- 1029 Sq ft
- Private balcony
- 24-hour concierge
- Residents Pool, Spa, Sauna & steam rooms
- Fully Equipped Gymnasium
- Cinema Screening Room
- Great Transport Links

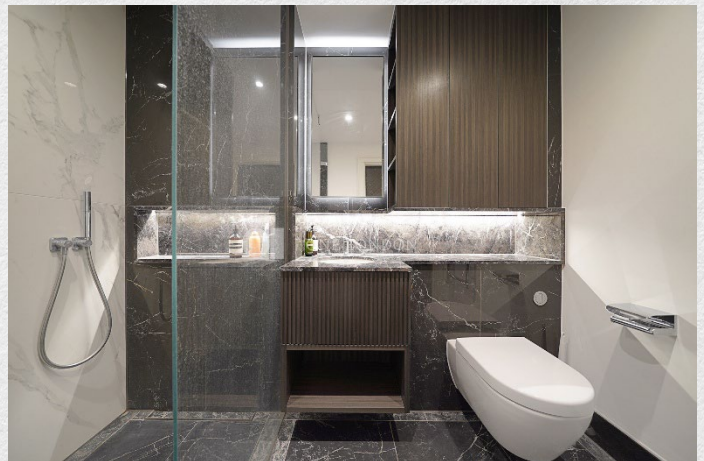
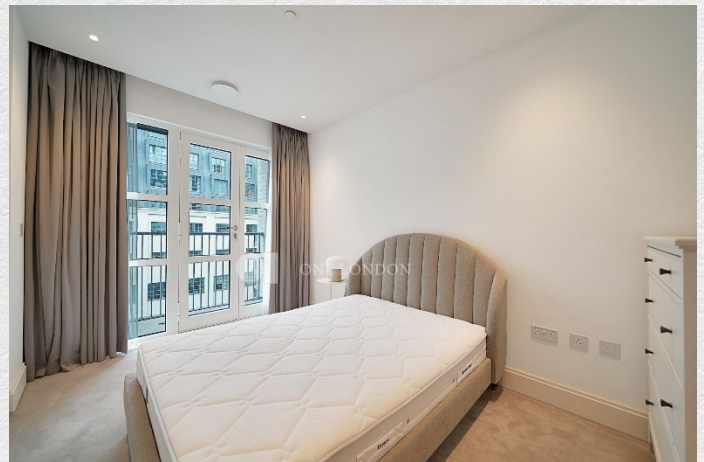
*One-London are proud to present this luxury two-bedroom apartment in the iconic 9 Millbank Place.*

*This two-bedroom two-bathroom apartment has been finished to the highest of specifications and furnished beautifully throughout.*

*There is a spacious 1029 sq ft open-plan living space with a luxury kitchen to include integrated appliances, a principal bedroom with elegant en-suite bathroom and private balcony. A second large balcony can be accessed from the second double bedroom and lounge. The apartment further benefits from engineered timber flooring, comfort cooling and underfloor heating.*

*The development features a luxury bespoke swimming pool and vitality pool, a fitness studio, sauna, steam and treatment rooms, a private residents cinema, private meeting rooms, private dining facilities, underground parking, and 24-hours concierge.*

*Positioned in the heart of Westminster Village, Millbank Quarter offers a prime location just a short walk from London's most iconic landmarks, with a vibrant mix of boutique cafés, upscale restaurants, and cultural institutions at your doorstep. This rare townhouse is a truly unique opportunity to enjoy sophisticated city living at its finest.*





ONE LONDON

PROPERTY

9 Millbank, Westminster,  
London SW1P

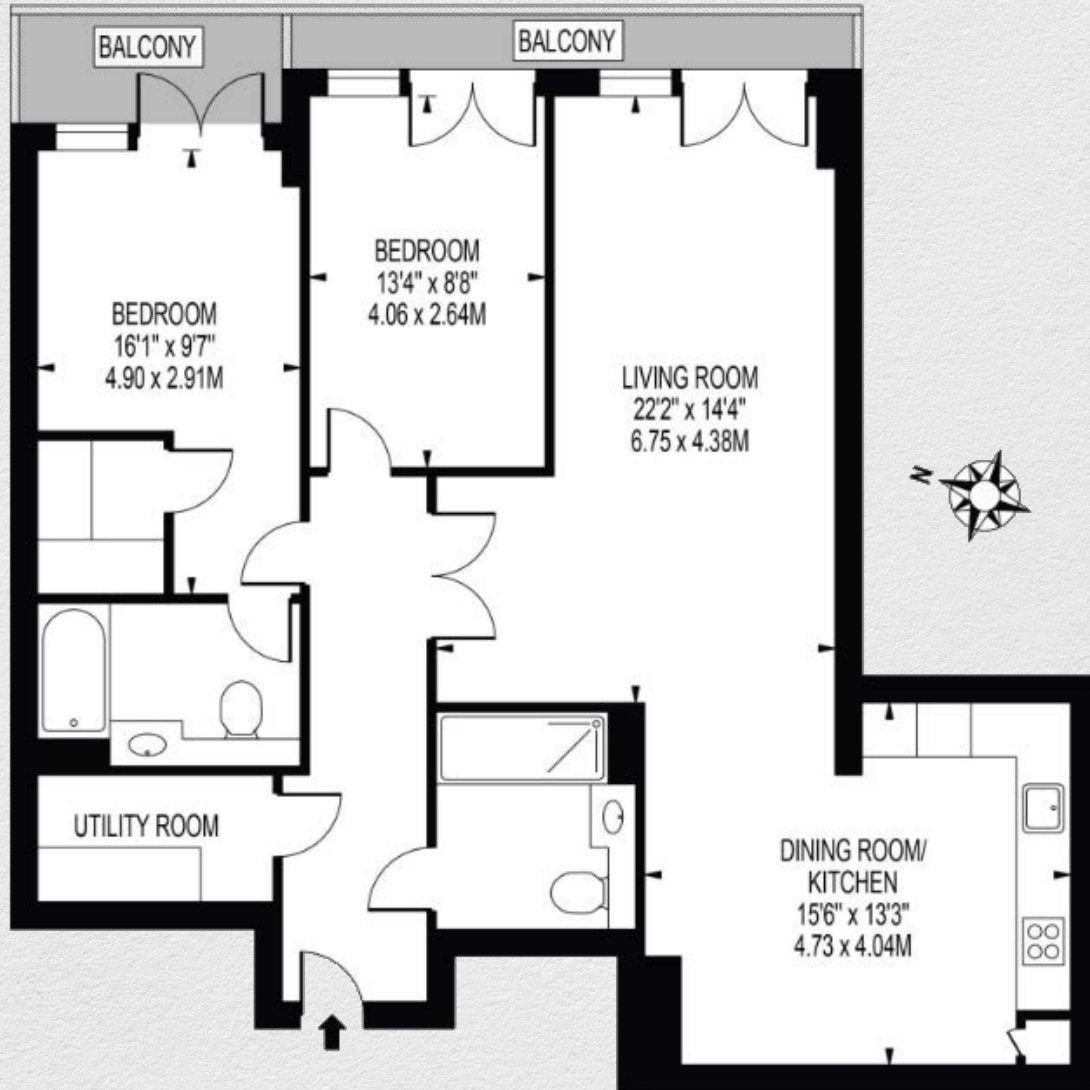
SIZE

1,029 sq ft

Two bedroom / Two bathroom

CONTACT

0207 856 0396  
info@one-london.uk  
www.one-london.uk



SIXTH FLOOR

\*\* For illustration purposes only. Could not be to scale.  
One-London aims to ensure accuracy but is not liable  
for any discrepancies.

671MB