



## Bromyard Avenue, W3

£484 Per week

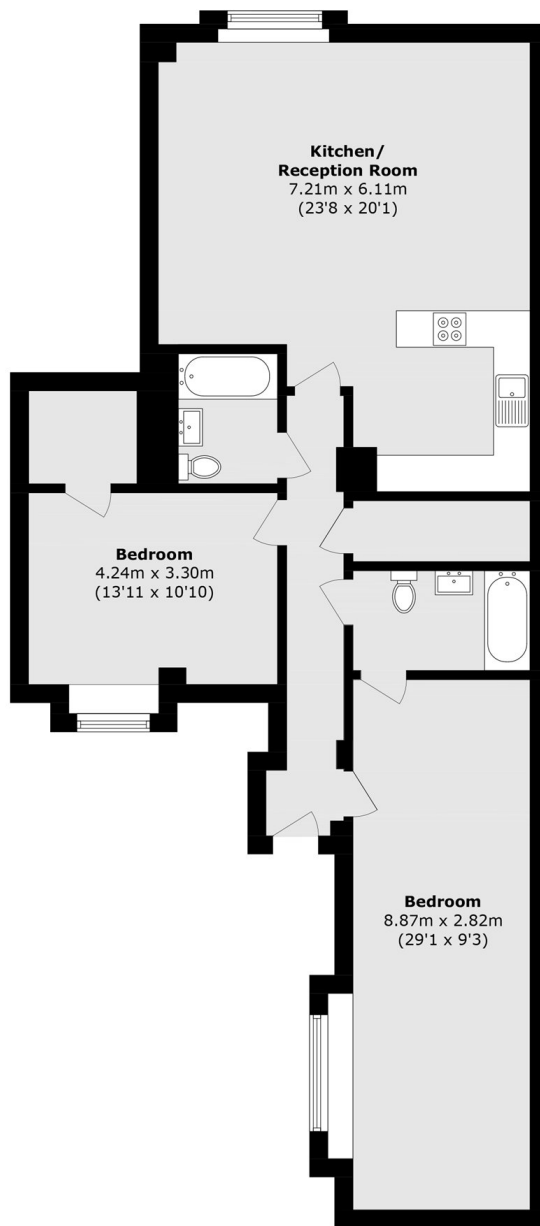
Originally designed as a live/work property this two double bedroom flat is considerably larger than your average Bromyard apartment. The property offers two double bedrooms both with en suite bathrooms and ideal for a small family.

Bromyard Avenue is located within half a mile to the A40 Dual carriageway and just over a half a mile to East Acton central line. Shepherds Bush market station is a mile and a half away.

### Features

- Gated Development
- Large Living Room
- Two Bedrooms
- Two Bathrooms
- Private Patio
- Work Living Unit

# Bromyard Avenue, London, W3



Total area (approx.): 102.9 sq. m (1107.6 sq. ft)