



URBAN ESTATES
SALES - LETTINGS - MANAGEMENT

Apartment 460, Block 9 Spectrum Blackfriars Road
, Salford, M3 7DZ

£1,300 Per month



Apartment 460, Block 9 Blackfriars Road, Salford, M3 7BZ

Modern 1-Bedroom Furnished
Apartment with Balcony – Blackfriars
Road, Salford

Available immediately, this modern
furnished one-bedroom apartment is
located in the popular Blackfriars Road
development, just a short walk from
Manchester City Centre.

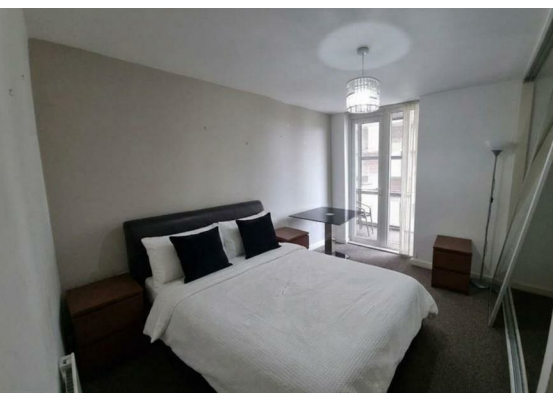
The property comprises a bright open-
plan furnished living, kitchen (with
fridge-freezer and dishwasher) and
dining area, a spacious double
bedroom, a contemporary bathroom
with bath and overhead shower, and
useful hallway storage with washing
machine. A private balcony provides
valuable outdoor space and attractive
views.

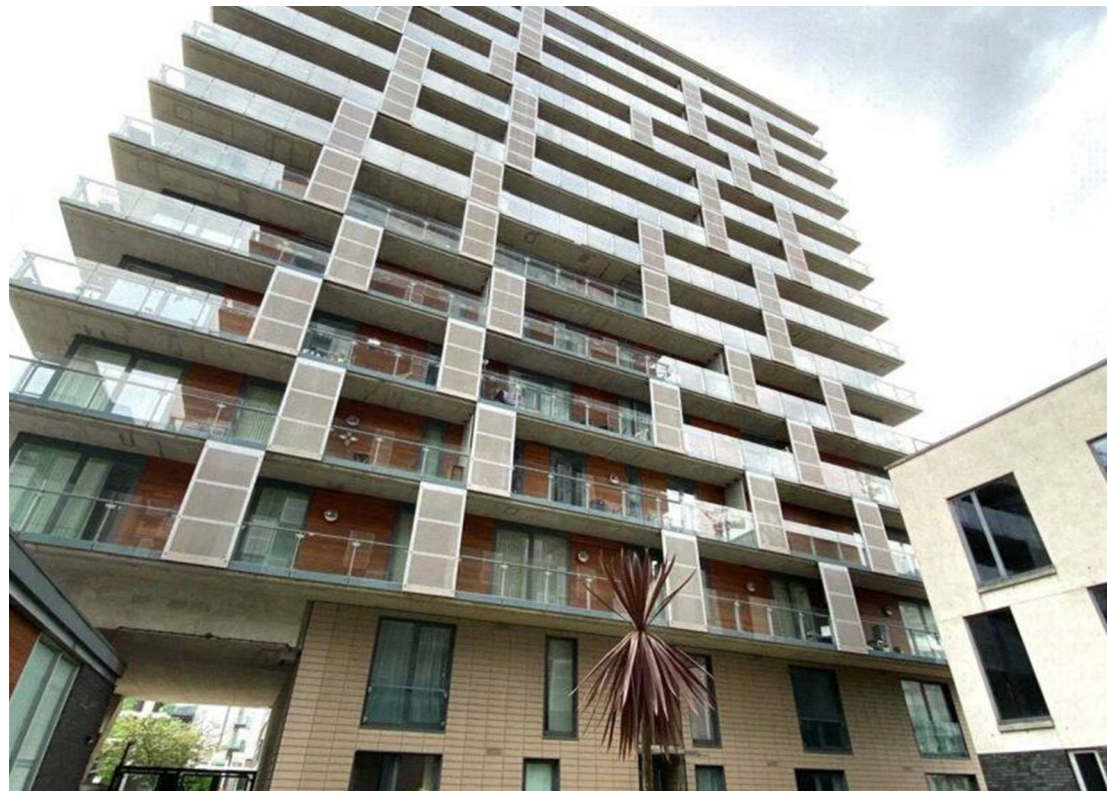
Residents benefit from a 24-hour
concierge service, secure fob entry
system, and excellent access to local
amenities, transport links, shops, cafés
and restaurants.

Key Features:

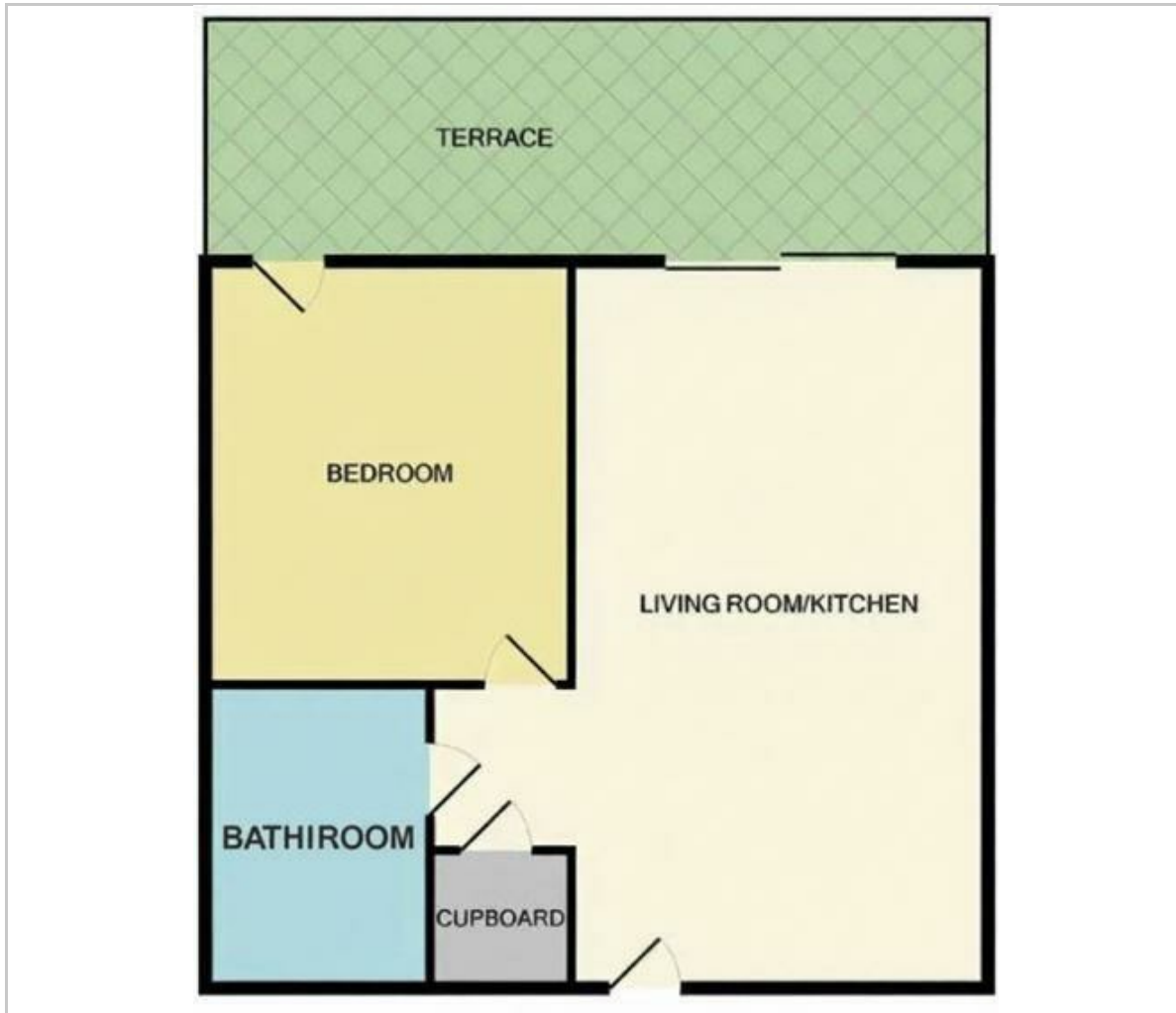
Available Immediately
Furnished
Approx. 517 sq ft
Spacious Double Bedroom
Open-Plan Living Area
Private Balcony
24-Hour Concierge
Secure Fob Entry
Walking Distance to Manchester City
Centre

Viewing available 02 July at 2:30pm –
please reply via the advert to arrange a
viewing.





Floor Plan



Viewing

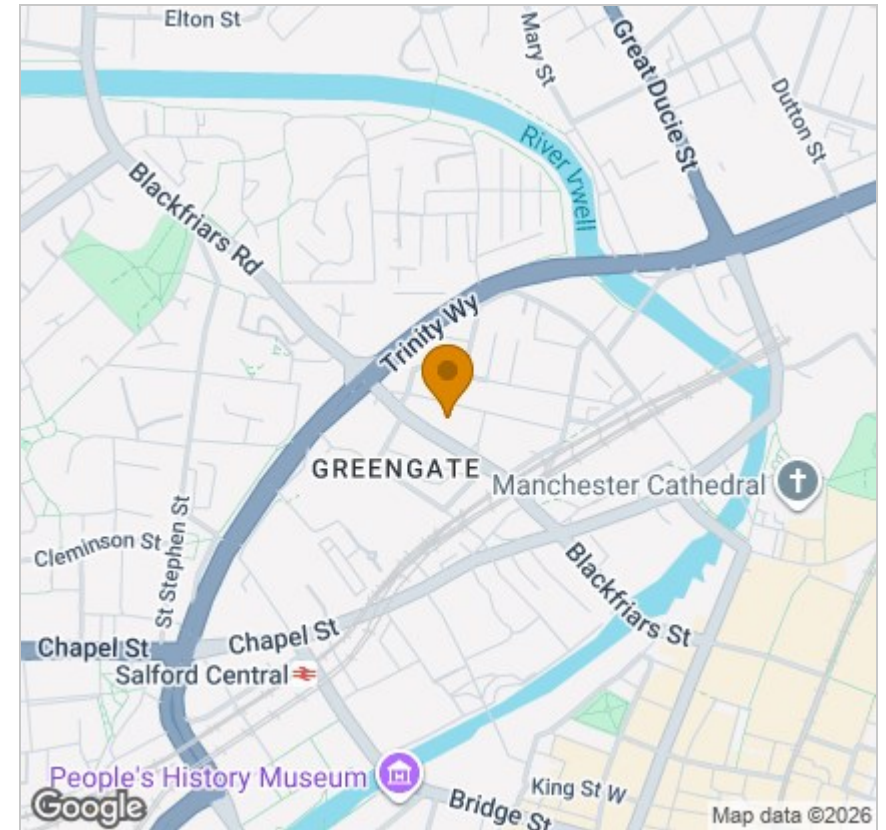
Please contact our Urban Estates Office on 0333 433 0348 if you wish to arrange a viewing appointment for this property or require further information.

These particulars, whilst believed to be accurate are set out as a general outline only for guidance and do not constitute any part of an offer or contract. Intending purchasers should not rely on them as statements of representation of fact, but must satisfy themselves by inspection or otherwise as to their accuracy. No person in this firm's employment has the authority to make or give any representation or warranty in respect of the property.

125 Deansgate, Lancs, M3 2BY

Tel: 0333 433 0348 Email: talat.ali@urbanestatesuk.co.uk <https://www.urbanestatesuk.co.uk/>

Area Map



Energy Efficiency Graph

