



# Clive Court

Maida Vale, W9

Asking Price £549,950

A beautifully refurbished two bedroom, two bathroom apartment located within a charming mansion block spanning over 500 sqft. The property has been finished to a high standard throughout, with an open plan kitchen living area that opens directly onto a private balcony. The kitchen benefits from sleek design and modern integrated appliances with herringbone flooring throughout.

The apartment includes a spacious double bedroom with an en suite bathroom, a smaller second bedroom and an additional family bathroom.

Clive Court is convenient for the cafes and shops in Clifton Road, buses on Maida Vale, tubes on the Bakerloo (Warwick Avenue) and (Edgware Road) District, Circle Metropolitan and Hammersmith and City lines.

**CHESTERTONS**



# Clive Court

## Maida Vale, W9

- Mansion Block
- Over 500sqft
- Newly refurbished
- Private balcony



---

**Tenure:** Share of Freehold 990 years 10 months

**Service Charge:** £4,332.30 pa

**Ground Rent:** £0

**Local Authority:** City of Westminster

**Council Tax Band:** D

Score	Energy rating	Current	Potential
92+	A		
81-91	B		
69-80	C		79 C
55-68	D	61 D	
39-54	E		
21-38	F		
1-20	G		

---

### *Chestertons Little Venice Sales*

26 Clifton Road

Maida Vale

London

W9 1SX

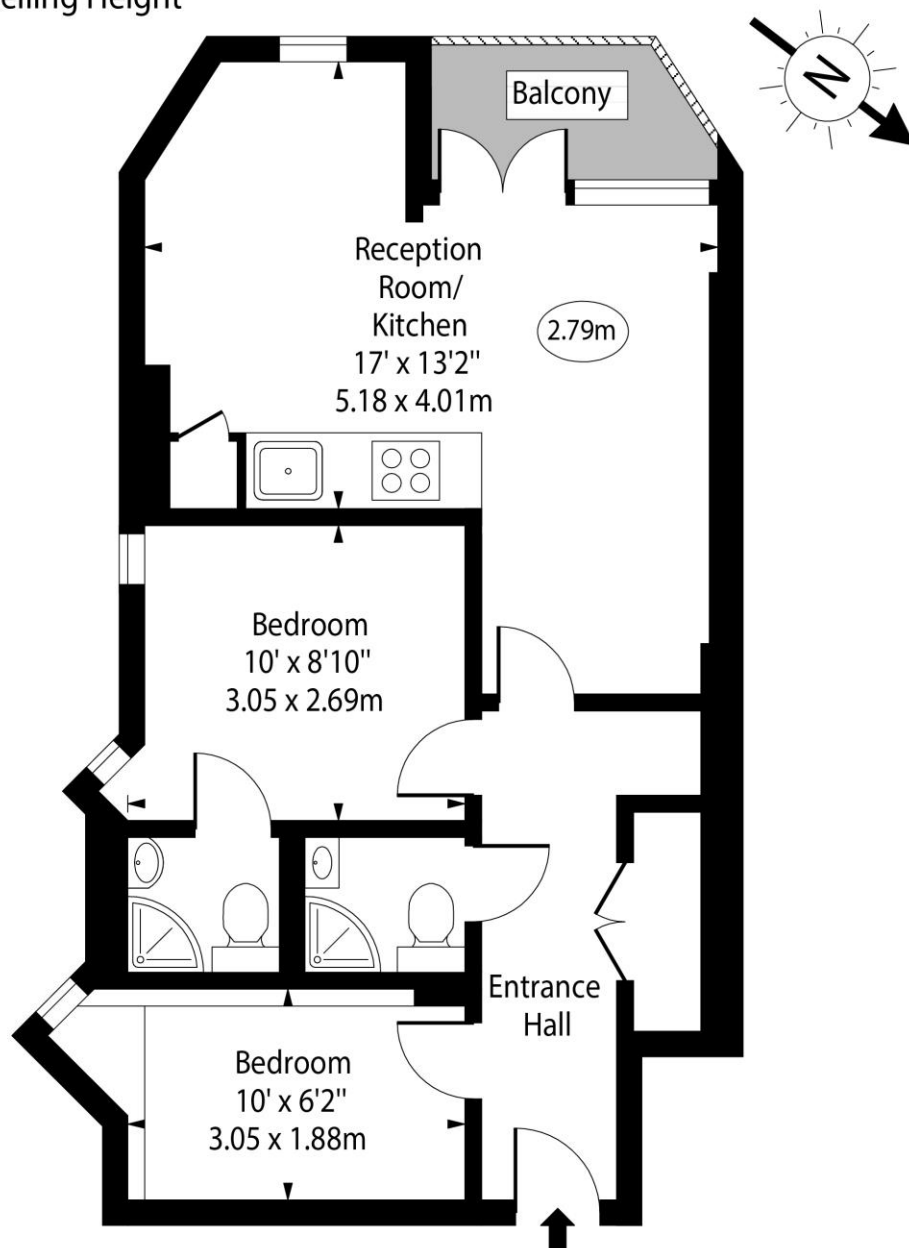
littlevenice@chestertons.co.uk

020 7286 4632

chestertons.co.uk

# Clive Court, Maida Vale, W9

○ - Ceiling Height



Fourth Floor

Approx Gross Internal Area 525 Sq Ft - 48.77 Sq M

For Illustration Purposes Only - Not To Scale

