

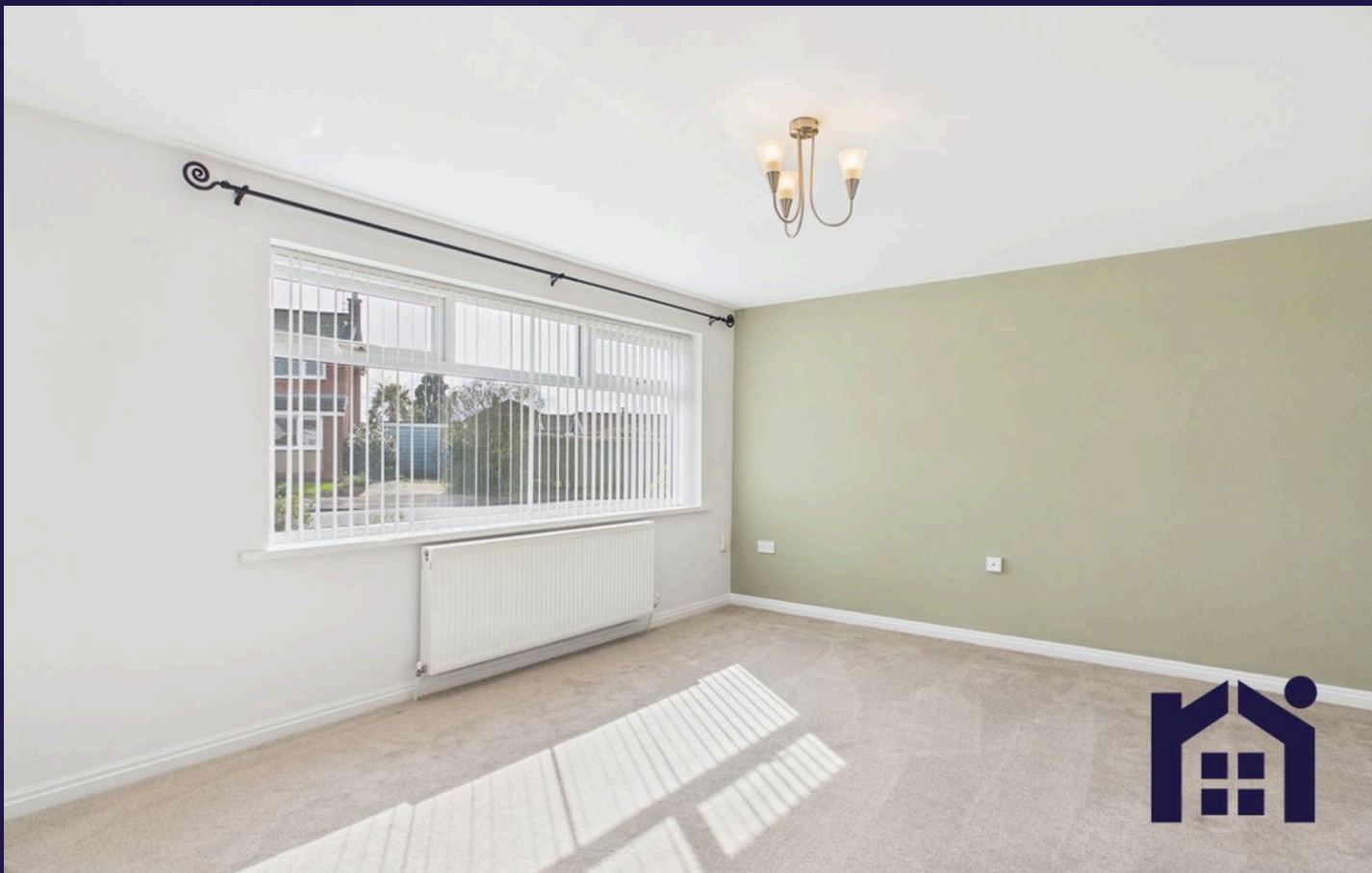
HOME  TRUTHS



19 Bleasdale Close, Leyland

Leyland


£1,400 PCM



19 Bleasdale Close

Leyland, Leyland

The property has been modernised throughout and is presented to an excellent standard. The spacious, light-filled lounge provides a welcoming setting for relaxation, while the contemporary fitted kitchen features ample storage, integrated appliances, and space for dining—perfect for both everyday living and entertaining.

There are three well-proportioned bedrooms, including a generous principal bedroom benefiting from its own en-suite shower room. A modern family bathroom serves the remaining bedrooms, all finished in a clean, neutral style ready for immediate occupation.

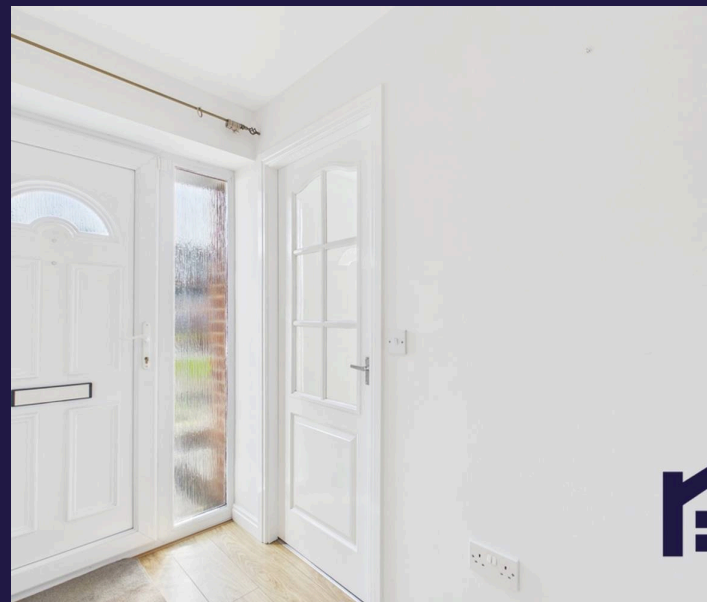
Externally, the property continues to impress with a large driveway providing ample off-road parking, a detached garage, and a private, low-maintenance rear garden—perfect for enjoying outdoor space without extensive upkeep.

Conveniently located within easy reach of local schools, amenities, and transport links, this delightful home offers both tranquillity and accessibility.

Available immediately.

Deposit: £1,615 (including holding deposit of £323).

Early viewing is highly recommended, please contact us to arrange your appointment.



19 Bleasdale Close

Leyland, Leyland

Council Tax band: D

Tenure: Freehold

EPC Energy Efficiency Rating: D

EPC Environmental Impact Rating: D

- Three-bedroom detached bungalow
- Virtual tour
- Detached garage
- Modernised throughout to a high standard
- Available immediately
- Close to local amenities, schools, and transport links



HOME  TRUTHS

Eccleston Branch

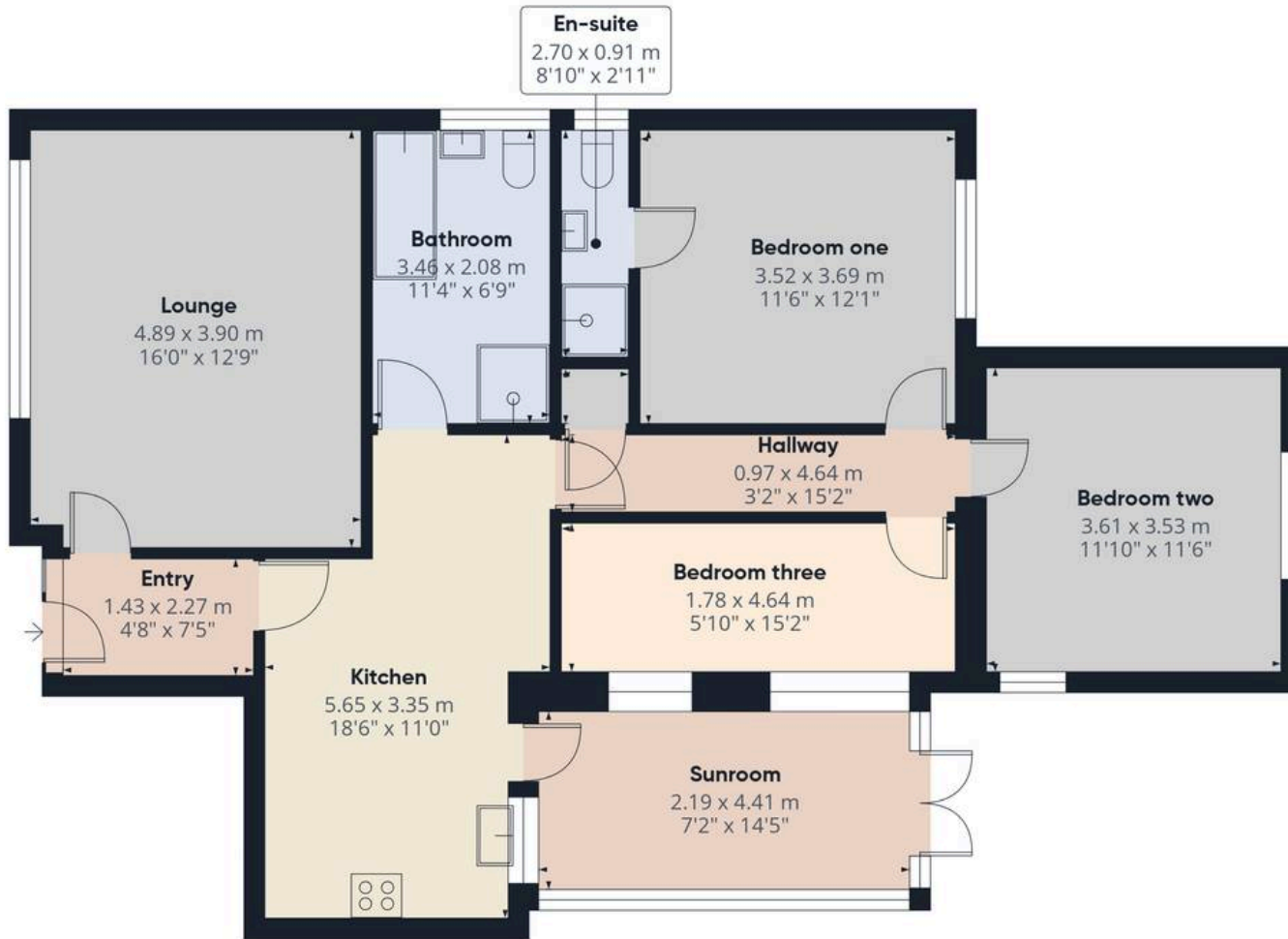
265 The Green, Eccleston, PR7 5TF
01257 451673

Coppull Branch

244 Spendmore Lane, Coppull, PR7 5DE
01257 794588

www.hometruthslancs.co.uk
office@hometruthslancs.co.uk





Floor 1 Building 1



Floor 1 Building 2

Approximate total area⁽¹⁾

112.2 m²
1208 ft²

(1) Excluding balconies and terraces

Calculations reference the RICS IPMS 3C standard. Measurements are approximate and not to scale. This floor plan is intended for illustration only.

GIRAFFE 360