



## North Common Road, W5

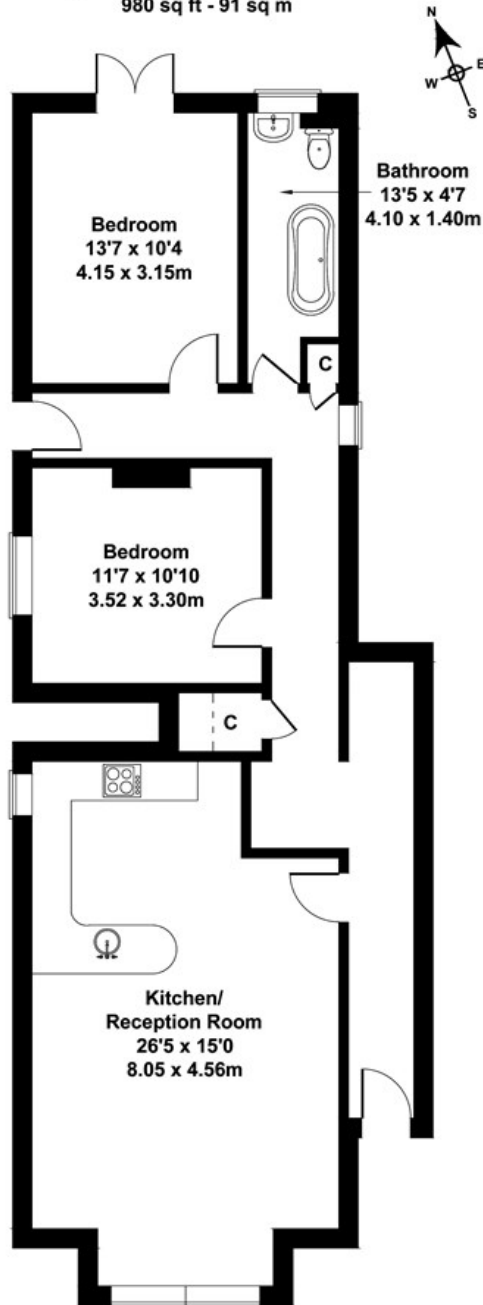
LONG LET. This stunning two-bedroom garden flat boasts beautiful interiors, modern décor and is well located close to local amenities and transport links.

- GARDEN FLAT
- TWO DOUBLE BEDROOMS
- LARGE OPEN PLAN RECEPTION/KITCHEN
- CLOSE TO STATION
- HIGH CELLINGS
- OVERLOOKING EALING COMMON

£2,600 PCM

# North Common Road

Approximate Gross Internal Area  
980 sq ft - 91 sq m



**GROUND FLOOR**

Not to Scale. Produced by The Plan Portal 2021  
For Illustrative Purposes Only.

Energy Efficiency Rating		
	Current	Potential
<i>Very energy efficient - lower running costs</i>		
(92 plus) <b>A</b>		
(81-91) <b>B</b>		
(69-80) <b>C</b>		
(55-68) <b>D</b>		
(39-54) <b>E</b>		
(21-38) <b>F</b>		
(1-20) <b>G</b>		
<i>Not energy efficient - higher running costs</i>		
<b>England &amp; Wales</b>	EU Directive 2002/91/EC	