



**Duncan Road, Gillingham ME7 4LE**

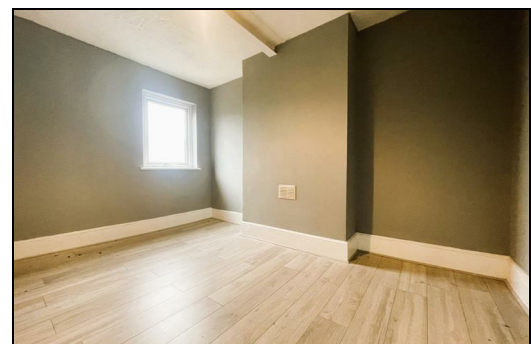
**£1,100 Per Calendar Month**

This spacious three-bedroom first floor flat on Duncan Road in Gillingham offers generously sized rooms and plenty of natural light throughout. The property features a bright lounge, three good sized bedrooms, a modern fitted kitchen, and a well presented bathroom, providing a comfortable and practical living space. Ideally located within walking distance of Medway Hospital, Gillingham High Street, and the mainline train station, the flat offers excellent access to local shops, amenities, and transport links, making it an ideal home for a professional or couple.

CR Real Estate are part The Ombudsman Redress Scheme and are a member of the Propertymark Client Money Protection Scheme. Tenant deposits are protected by the Tenancy Deposit Scheme. For more information, please contact us.

Client Money Protection is provided by: Client Money Protect. Scheme Ref: CMP004209

Independent redress is provided by: The Property Ombudsman (TPO). Membership Number: E01687



Energy Efficiency Rating		
	Current	Potential
Very energy efficient - lower running costs		
(92 plus) <b>A</b>		
(81-91) <b>B</b>		
(69-80) <b>C</b>		
(55-68) <b>D</b>		
(39-54) <b>E</b>		
(21-38) <b>F</b>		
(1-20) <b>G</b>		
Not energy efficient - higher running costs		
England & Wales		
EU Directive 2002/91/EC		

Environmental Impact (CO <sub>2</sub> ) Rating		
	Current	Potential
Very environmentally friendly - lower CO2 emissions		
(92 plus) <b>A</b>		
(81-91) <b>B</b>		
(69-80) <b>C</b>		
(55-68) <b>D</b>		
(39-54) <b>E</b>		
(21-38) <b>F</b>		
(1-20) <b>G</b>		
Not environmentally friendly - higher CO2 emissions		
England & Wales		
EU Directive 2002/91/EC		



ESTATE AGENCY : REDEFINED

