



Wordsworth Avenue, REDDITCH B97 5BH

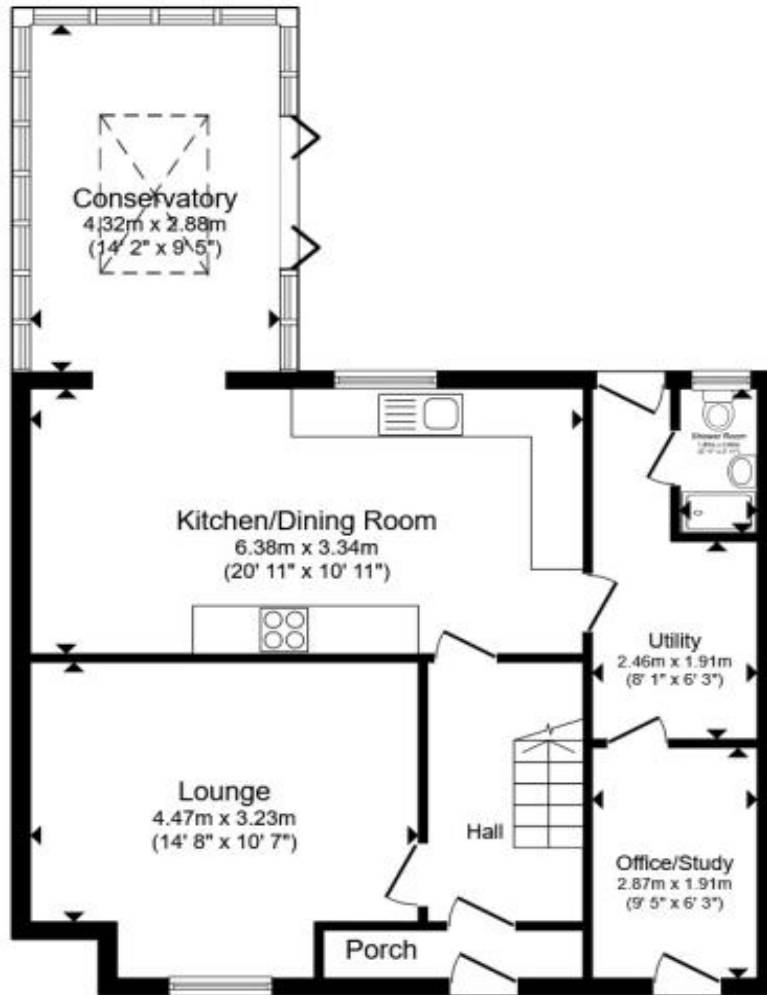


welcome to

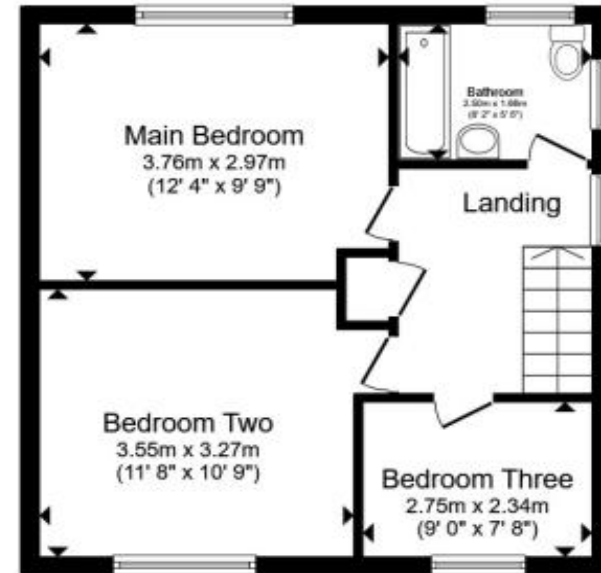
Wordsworth Avenue, REDDITCH

***** BEAUTIFULLY PRESENTED SEMI-DETACHED *** EXTENDED *** DRIVEWAY *** THREE GOOD SIZED BEDROOMS *** SPACIOUS REAR GARDEN *** CONSERVATORY *** UTILITY ROOM *** KITCHEN/DINER *** DOWNSTAIRS TOILET *** FAMILY BATHROOM *** GREAT LOCATION *****





Ground Floor



First Floor

Total floor area 113.9 m² (1,226 sq.ft.) approx

This floor plan is for illustrative purposes only. It is not drawn to scale. Any measurements, floor areas (including any total floor area), openings and orientation are approximate. No details are guaranteed, they cannot be relied upon for any purpose and they do not form part of any agreement. No liability is taken for any error, omission or misstatement. A party must rely upon its own inspection(s). Powered by www.propertybox.io

**Driveway
Entrance Porch**

With double glazed windows to the front

Entrance Hallway

With a central heating radiator

Living Room

With double glazed windows to the front and a central heating radiator

Kitchen/Dining Room

With a range of wall/base units, a gas hob, electric oven, a dishwasher, double glazed windows to the rear and a central heating radiator

Conservatory

With double glazed bifold doors to the rear, a log burner, double glazed windows to the rear, and a central heating radiator

Utility Room

With plumbing for a washing machine and a central heating radiator

Office/Study

With a central heating radiator

Downstairs Shower Room

With a w/c, hand wash basin, shower cubicle, and double glazed windows to the rear

Landing

Bedroom One

With double glazed windows to the rear and a central heating radiator

Bedroom Two

With double glazed windows to the front and a central heating radiator

Bedroom Three

With double glazed windows to the front and a central heating radiator

Family Bathroom

With a w/c, hand wash basin, a bath with shower over, a heated towel rail and double glazed windows to the rear

Rear Garden

With patio and lawn areas

Agents Note

The Council Tax Band for this property is a C



view this property online shipways.co.uk/Property/RDC110507



welcome to

Wordsworth Avenue, REDDITCH

- Beautifully presented property
- Extended
- Driveway
- Three bedrooms
- Spacious rear garden

Tenure: Freehold EPC Rating: D
Council Tax Band: C

£380,000



Please note the marker reflects the postcode not the actual property

view this property online shipways.co.uk/Property/RDC110507



Property Ref:
RDC110507 - 0002

1. MONEY LAUNDERING REGULATIONS Intending purchasers will be asked to produce identification documentation at a later stage and we would ask for your co-operation in order that there is no delay in agreeing the sale. 2. These particulars do not constitute part or all of an offer or contract. 3. The measurements indicated are supplied for guidance only and as such must be considered incorrect. Potential buyers are advised to recheck measurements before committing to any expense. 4. We have not tested any apparatus, equipment, fixtures or services and it is in the buyers interest to check the working condition of any appliances. 5. Where an EPC, or a Home Report (Scotland only) is held for this property, it is available for inspection at the branch by appointment. If you require a printed version of a Home Report, you will need to pay a reasonable production charge reflecting printing and other costs. 6. We are not able to offer an opinion either written or verbal on the content of these reports and this must be obtained from your legal representative. 7. Whilst we take care in preparing these reports, a buyer should ensure that his/her legal representative confirms as soon as possible all matters relating to title including the extent and boundaries of the property and other important matters before exchange of contracts.

Shipways is a trading name of Sequence (UK) Limited which is registered in England and Wales under company number 4268443, Registered Office is Cumbria House, 16-20 Hockliffe Street, Leighton Buzzard, Bedfordshire, LU7 1GN. VAT Registration Number is 500 2481 05.


shipways



01527 65155



Redditch@shipways.co.uk



3 Alcester Street, REDDITCH, Worcestershire,
B98 8AE



shipways.co.uk