



10 Hillside Crescent, Wicklewood  
Wymondham



Offers Over £425,000  
Minors & Brady

# 10 Hillside Crescent

Wicklewood, Wymondham

A striking blend of contemporary design and countryside charm, this beautifully reimagined four-bedroom bungalow in Wicklewood offers a rare opportunity to enjoy true luxury on one effortless level. Fully renovated and extended in 2024, the home showcases a stunning modern rendered façade paired with a dark pantiled roof, giving an elegant first impression that sets the tone for what lies within. Step inside to discover a thoughtfully designed interior where style meets comfort, featuring a brand-new kitchen, bathrooms, heating system, roof and windows. The open-plan kitchen and dining area, finished in calming grey tones with brushed fittings, Quooker tap, wine cooler and stone worktops. A vaulted sitting room adds light and volume, creating a beautiful space to relax or entertain. The principal suite offers a sense of modern indulgence, with a vaulted ceiling, dressing room, and en-suite shower room. Outside, landscaped gardens, artificial lawns, and a generous terrace make outdoor living both easy and enjoyable. With a garage, extensive driveway, and every modern convenience, this is a home that perfectly balances luxury, practicality, and timeless appeal.

- Exceptional four-bedroom detached bungalow, fully extended and renovated to an impeccable standard in 2024
- Attractive modern rendered exterior with contrasting dark pantiled roof, new windows, doors and roof for a complete turnkey finish
- Brand-new central heating system offering energy-efficient, low-maintenance living
- Open-plan kitchen and dining area in stylish grey tones, featuring stone worktops, brushed metal fittings and premium integrated appliances
- High-spec details including ceramic sink with Quooker boiling-water tap, integrated wine cooler, and contemporary lighting
- Principal bedroom suite with vaulted ceiling, private dressing and en-suite shower room





M&B

# 10 Hillside Crescent

Wicklewood, Wymondham

Council Tax band: C

Tenure: Freehold

EPC Energy Efficiency Rating: D

EPC Environmental Impact Rating:



M&B

# 10 Hillside Crescent

Wicklewood, Wymondham

A striking blend of contemporary design and countryside charm, this beautifully reimagined four-bedroom bungalow in Wicklewood offers a rare opportunity to enjoy true luxury on one effortless level. Fully renovated and extended in 2024, the home showcases a stunning modern rendered façade paired with a dark pantiled roof, giving an elegant first impression that sets the tone for what lies within. Step inside to discover a thoughtfully designed interior where style meets comfort, featuring a brand-new kitchen, bathrooms, heating system, roof and windows. The open-plan kitchen and dining area, finished in calming grey tones with brushed fittings, Quooker tap, wine cooler and stone worktops. A vaulted sitting room adds light and volume, creating a beautiful space to relax or entertain. The principal suite offers a sense of modern indulgence, with a vaulted ceiling, dressing room, and en-suite shower room. Outside, landscaped gardens, artificial lawns, and a generous terrace make outdoor living both easy and enjoyable. With a garage, extensive driveway, and every modern convenience, this is a home that perfectly balances luxury, practicality, and timeless appeal.

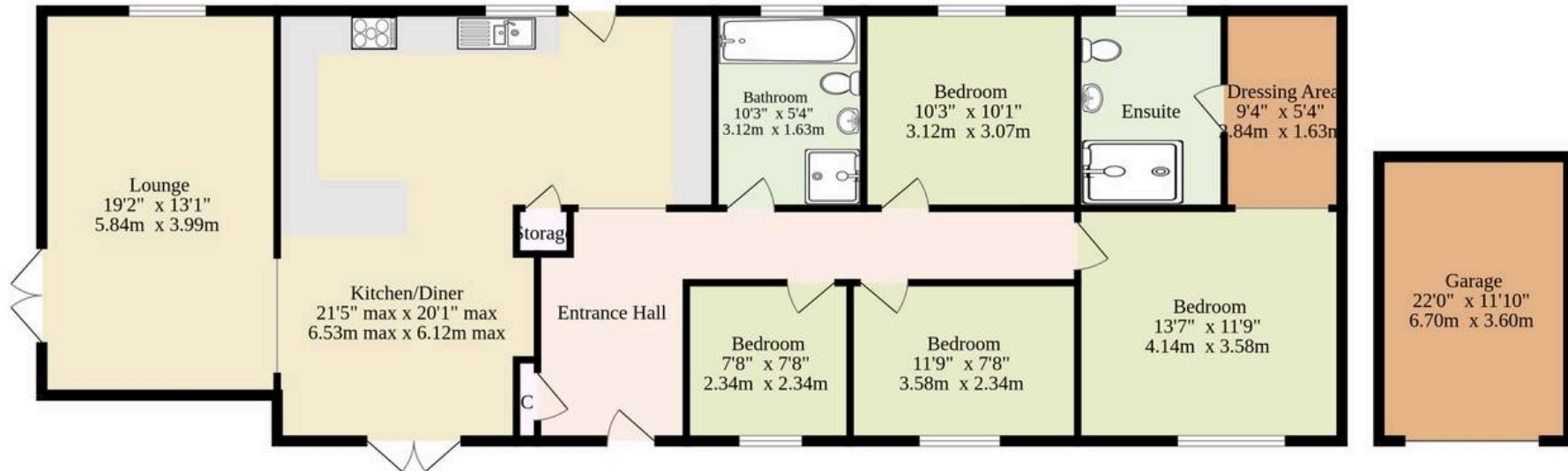
## The Location

Hillside Crescent enjoys a peaceful position within the sought-after village of Wicklewood, perfectly placed just outside the bustling market town of Wymondham. This enviable setting offers the ideal balance of countryside tranquillity and everyday convenience, surrounded by open fields and village charm, yet only moments from a wealth of local amenities and excellent transport links.

Wymondham is a thriving and historic market town, home to a great selection of independent shops, cafés, and restaurants, along with popular high-street names including Waitrose, Lidl, and Co-op. The town offers everything from traditional pubs to modern fitness centres, as well as beautiful green spaces



## Ground Floor 1567 sq.ft. (145.6 sq.m.) approx.



TOTAL FLOOR AREA : 1567 sq.ft. (145.6 sq.m.) approx.

Whilst every attempt has been made to ensure the accuracy of the floorplan contained here, measurements of doors, windows, rooms and any other items are approximate and no responsibility is taken for any error, omission or mis-statement. This plan is for illustrative purposes only and should be used as such by any prospective purchaser. The services, systems and appliances shown have not been tested and no guarantee as to their operability or efficiency can be given.  
Made with Metropix ©2025

# Dreaming of this home? Let's make it a *reality*.



Meet *Kyle*  
Branch Manager



Meet *Aysegul*  
Aftersales Progressor



Meet *Curtis*  
Listings Director

Minors & Brady  
*Your home, our market*



dereham@minorsandbrady.co.uk



01362 700820



9a Market Place, Dereham, NR19 2AW

BURY ST. EDMUNDS | CAISTER-ON-SEA | DEREHAM | DISS | NORWICH | OULTON BROAD | WROXHAM



## How can we support

- ✓ Residential Mortgages
- ✓ Protection & Insurance
- ✓ Buy-to-let (personal and limited company)



**Matt Waters**  
Director and  
Principal



**Victoria Payne**  
Mortgage and  
Protection Advisor

Offering you quick and professional mortgage advice every step of the way.

T: 01603 210378  
E: [enquiries@norfolk-mortgages.co.uk](mailto:enquiries@norfolk-mortgages.co.uk)