



## Penton Place, SE17

£750,000



- Freehold
- Private Garden
- Three Bathrooms
- House
- Three Bedrooms
- Chain Free







## ABOUT THE PROPERTY

This three double bedroom, three bathroom mid terrace freehold house benefits from a desirable south easterly facing rear garden. The property offers exceptional ground-floor living space, enhanced by a rear extension that opens onto a private garden. Generously proportioned throughout, the house is bright and spacious and further features a large private garden with external storage.

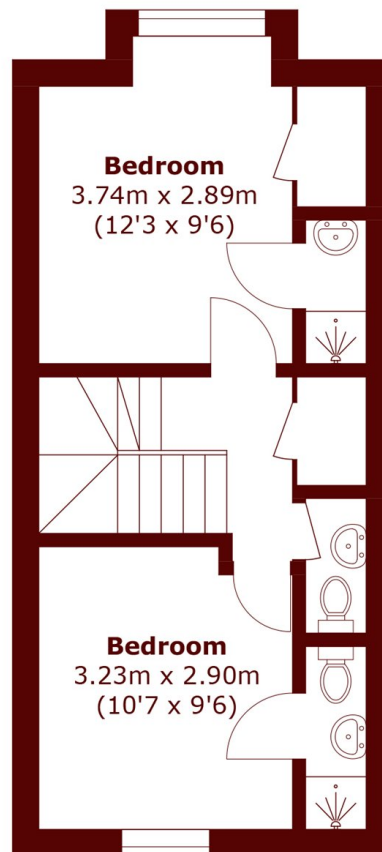
Located on one of the area's most desirable residential roads, the property is moments from Kennington Underground Station (Northern Line) and within easy reach of Elephant & Castle stations (Bakerloo, Northern, National Rail). Local shops and the green open spaces of Kennington Park are just a short walk away, while the property benefits from a friendly neighbourhood and is offered chain free.



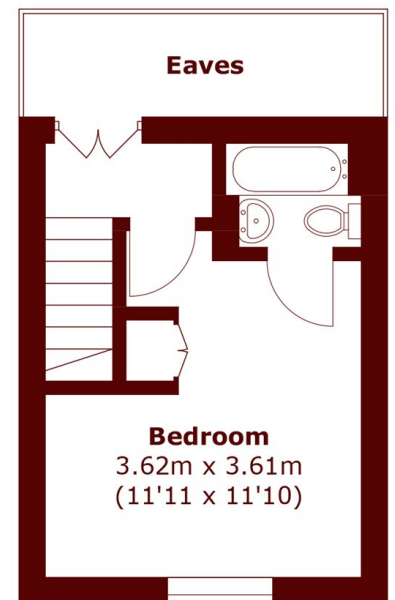




**Ground Floor**



**First Floor**



**Second Floor**

Total area (approx.): 85.0 sq. m (914.8 sq. ft)  
Outdoor Storage (approx.): 2.0 sq. m (21.5 sq. ft)  
(Excluding Eaves)

## Marsh & Parsons Kennington

295 Kennington Road,  
London, SE11 4QE  
020 7587 1533

We aim to make our particulars both accurate and reliable. However, they are not guaranteed; nor do they form part of an offer or contract. If you require clarification on any points then please contact us, especially if you're traveling some distance to view. Please note that appliances and heating systems have not been tested and therefore no warranties can be given as to their good working order.