



Howard Building
368 Queenstown Road, SW11

CHESTERTONS





A fantastic studio apartment on the ground floor in Chelsea Bridge Wharf with a large private terrace.

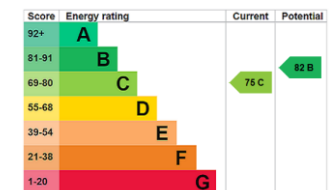
This apartment benefits from a large open plan area that is flexible for a resident and how they would like to decide on layout. The modern kitchen is compact but has been well designed to incorporate all appliances needed as well as not compromising on storage. The peaceful location of this beautiful riverside development is a stone's throw from Battersea Park and the buzz of Battersea Power Station.

The apartment is a great investment opportunity and can be purchased with tenants in residence, please enquire for rental details.

The property is located a short walk away from Queenstown Road and Battersea Park rail stations, running into Waterloo and London Victoria. The tube can also be found with the Northern Line station at Battersea Power Station along with extensive range of upmarket shops, bars and restaurants.

- Studio Apartment
- Private Terrace on the water
- 24hr Concierge
- Fantastic location
- 392sq ft

Asking Price £350,000



Tenure: Leasehold 973 years 6 months
Service Charge: £2,500 Per Annum
Ground Rent: £750 Per Annum
Local Authority: Wandsworth Council
Council Tax Band: E

Chestertons Battersea Park & Nine Elms Sales

62-64 Battersea Bridge Road
 London
 SW11 3AG
 batterseapark@chestertons.co.uk
 0203 040 8700
 chestertons.co.uk

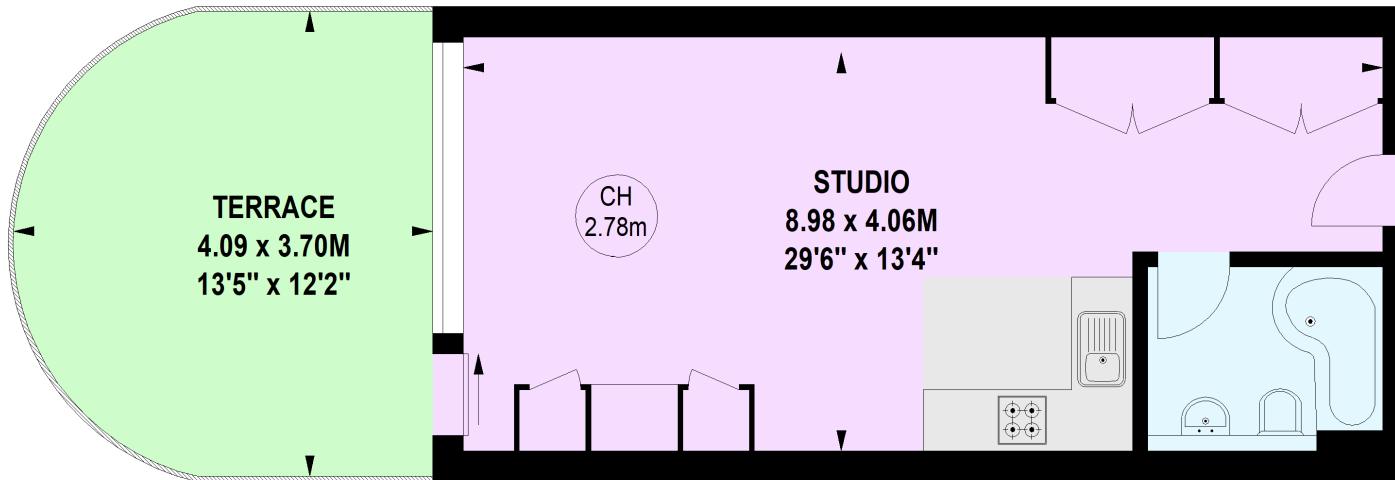
Howard Building, Queenstown Road, SW11

Approximate gross internal area

36.42 sq m / 392 sq ft



Key :
CH - Ceiling Height



Ground Floor

**Not to scale, for guidance only and must not be relied upon as a statement of fact.
All measurements and areas are approximate only**

