



Eardley Crescent, SW5

£5,000 Per calendar month

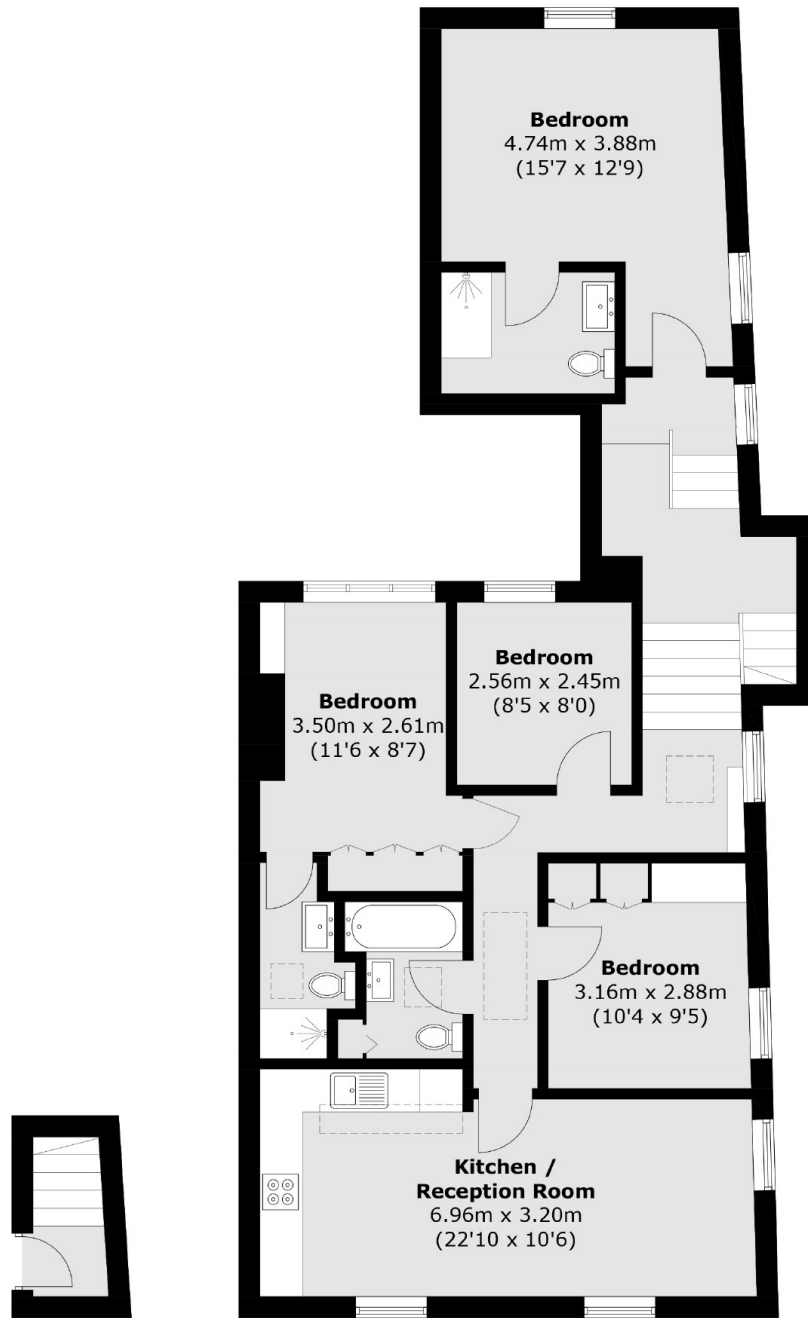
A well proportioned, newly refurbished four bedroom, three bathroom flat that benefits from a spacious open plan kitchen living area. The property is perfect for sharers looking for something within walking distance to Earls Court tube station.

Eardley Crescent is a popular residential Road, located off Warwick Road. The property benefits from quick access to the A4 for routes in and out of Central London. Earls Court station is moments away.

Features

- Newly Refurbished
- Four Double Bedrooms
- Three Bathrooms
- Open Plan Kitchen
- Wooden Floors
- Natural Light

Eardley Crescent, London, SW5



Third Floor

Top Floor

Total area (approx.): 96.5 sq. m (1038.6 sq. ft)