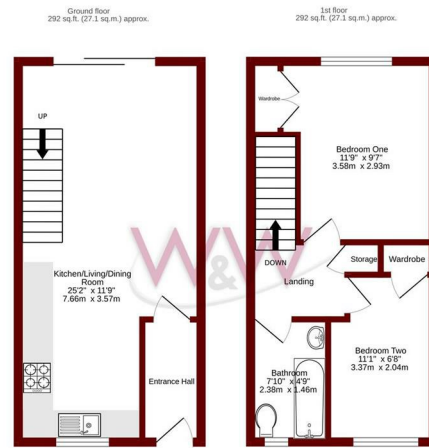




Christie Avenue | | Whiteley | PO15 7JE

£1,275 Per Month

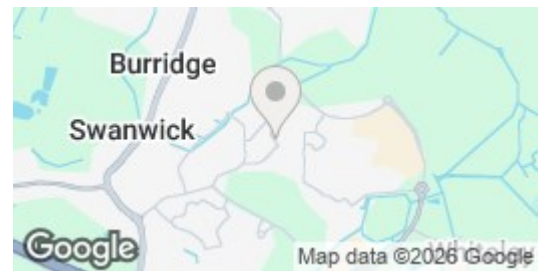




TOTAL FLOOR AREA: 584 sq ft. (54.2 sq m.) approx.

Measures shown above have been taken to provide an indication of the approximate dimensions. Measurements of areas, volumes, heights and any other items are approximate and no responsibility is taken for any error, omission or misstatement. This plan is for illustrative purposes only and should not be used as a basis for any prospective purchase. The services, quality and condition of the property have not been tested and no guarantee is given as to their quality or efficiency. Use for general information only. © Walker & Waterer 2025

Energy Efficiency Rating		Current	Potential
Very energy efficient - lower running costs			
(92 plus)	A		
(81-91)	B		
(69-80)	C		
(55-68)	D		
(39-54)	E		
(21-38)	F		
(1-20)	G		
Not energy efficient - higher running costs			
England & Wales		76	81
EU Directive 2002/91/EC			



Description

W&W are delighted to offer for rent this beautifully presented two bedroom terraced house. The property boasts two bedrooms, impressive open plan kitchen/dining/living room & modern family bathroom. The property also benefits from a lovely landscaped rear garden & driveway parking for two vehicles to the front. Available from 1st July 2026 Please note that historical images have been used.

Key features



H3 Whiteley Shopping Centre
 Whiteley Way
 Whiteley
 Hants
 PO15 7PD
 01489 580800
 pm@walkerwaterer.co.uk
 www.walkerwaterer.co.uk