

St James Crescent, Brixton, SW9

1 bedroom flat for sale

£425,000

Leasehold

Property Details

This striking one bedroom apartment with a private terrace is set on the top floor of a modern development in the heart of Brixton. Elevated above the rooftops, the property enjoys sweeping views and an abundance of natural light, whilst maintaining a peaceful and secluded feel. Beautifully presented throughout and ready to move into immediately, the apartment features a generous open-plan reception with warm striking flooring, a sleek contemporary kitchen with integrated appliances and a dedicated utility cupboard housing a washer/dryer. Glass doors extend the living space onto a private decked terrace, ideal for dining al-fresco or relaxing whilst taking in the impressive skyline views. The double bedroom is bright and tranquil with built-in storage, complemented by a stylish modern bathroom. Additional benefits include excellent soundproofing, energy-efficient design, lift access, a communal garden plus secure bike, all within easy reach of Brixton and Loughborough Junction stations.

Features

- One bedroom
- Private terrace
- Occupying the top seventh floor with far-reaching rooftop views
- Contemporary development
- Secure communal bike storage
- Central Brixton a five-minute walk
- 6-minute walk to Loughborough Junction Thameslink Station
- Victoria line a seven-minute walk
- Clapham, Stockwell and Heme Hill around a twenty-minute walk
- Chain-free

Council tax band C EPC rating B (84)

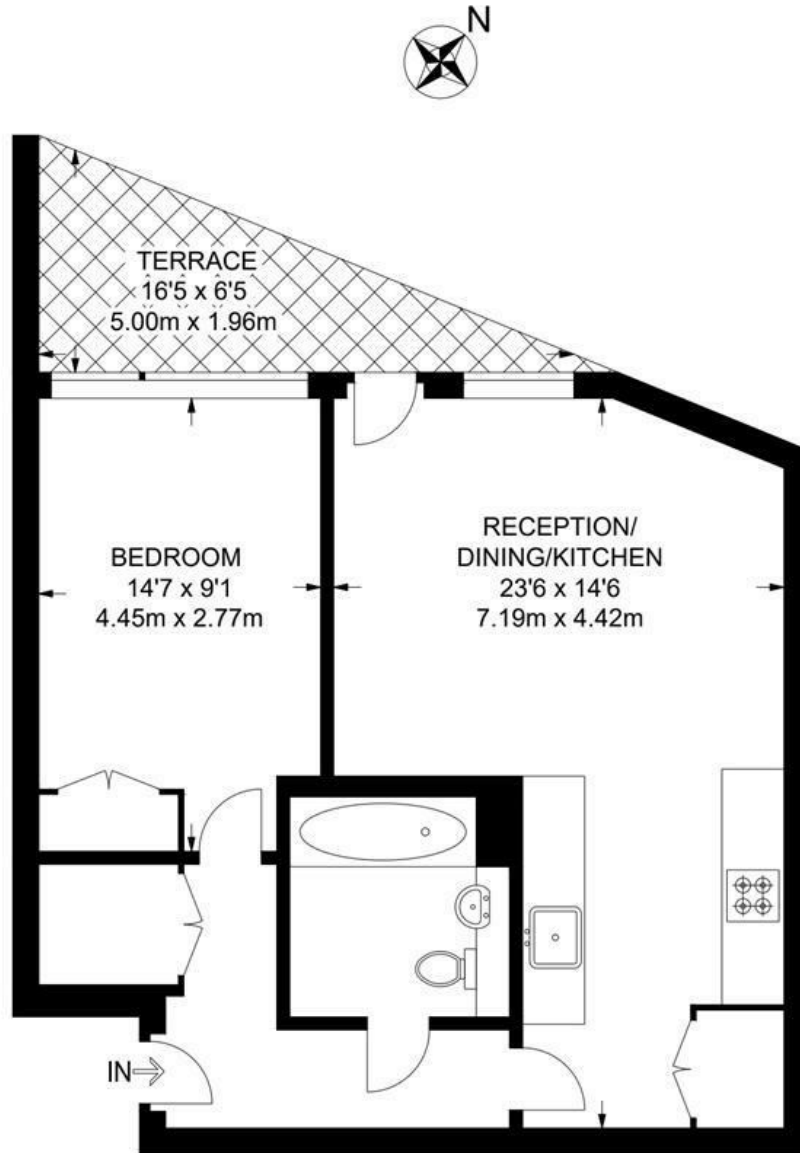




St James Crescent, Brixton, SW9

**St James Crescent
1 Bedroom Flat**

APPROXIMATE GROSS INTERNAL AREA: **540 SQ FT / 50.2 SQ M**



SEVENTH FLOOR



While we try our very best, floor plans are produced as a guide only and we take no responsibility for the precise accuracy with which any property is represented.

St James Crescent, Brixton, SW9

