

Rolfe East



King Edwards Gardens, W3

£2,125 pcm

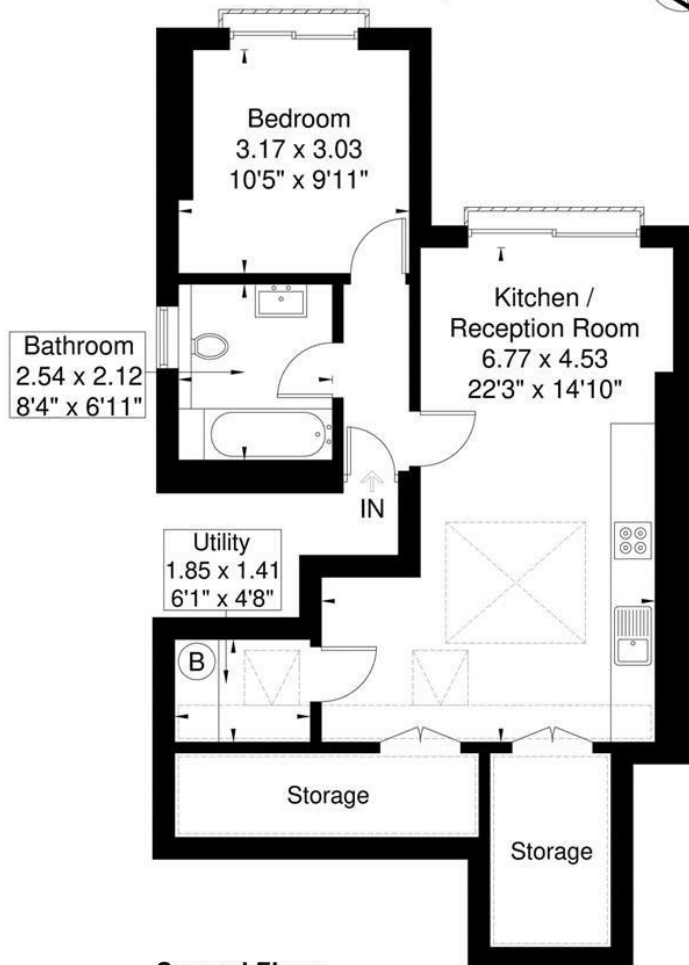
- Available Mid August
- Utility room with washer/dryer
- Unfurnished
- Audio/Video Secure Entry System
- Second Floor
- Skylight over kitchen and living space

King Edward Gardens

Approximate Gross Internal Area = 42.8 sq m / 460 sq ft

Reduced Headroom = 13.5 sq m / 145 sq ft

Total = 56.3 sq m / 605 sq ft



Second Floor

Although every attempt has been made to ensure accuracy, all measurements are approximate.
The floorplan is for illustrative purposes only and not to scale.

© www.perspective.co.uk

Viewings

Viewings by arrangement only.

Call 020 8993 7755 to make an appointment.

Council Tax Band

D

EPC Rating:

C

Energy Efficiency Rating		
	Current	Potential
Very energy efficient - lower running costs		
(92 plus) A		
(81-91) B		
(69-80) C	80	80
(55-68) D		
(39-54) E		
(21-38) F		
(1-20) G		
Not energy efficient - higher running costs		
England & Wales	EU Directive 2002/91/EC	