



**Guide Price**  
**£425,000**

**Leasehold**

2x  2x  1x 

**Bodiam Court,  
Thornbury Way,  
Walthamstow, E17**



## Main features

- Second-floor modern apartment in excellent condition
- Spacious open-plan living with balcony
- Allocated parking space
- Generously sized bedrooms
- Stylish en-suite to the master bedroom

## Accommodation

### SECOND FLOOR

Lounge/Kitchen/Dining Room: 25'7 x 12'4 (7.80m x 3.76m)

Bedroom 1: 17'0 x 9'2 (5.19m x 2.80m)

Shower En Suite

Bedroom 2: 17'9 x 9'2 (5.41m x 2.80m)

Bathroom: 8'1 x 6'2 (2.47m x 1.88m)

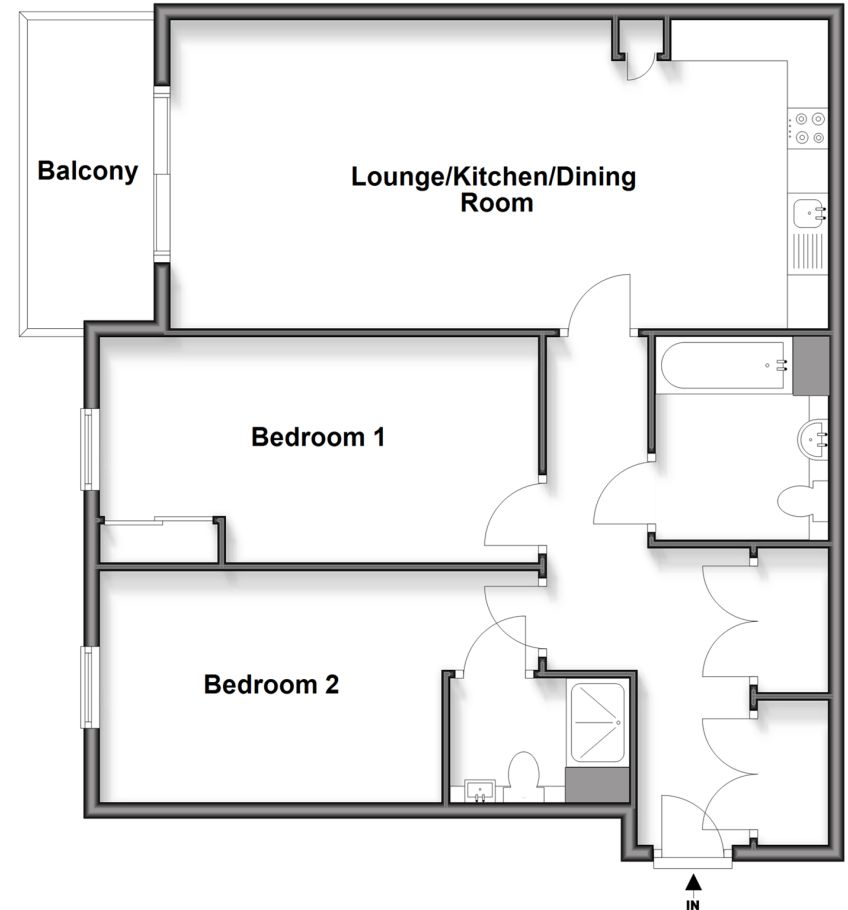
### OUTSIDE

Balcony off Lounge

Allocated Parking Space

### Second Floor

Approx. 85.6 sq. metres (921.9 sq. feet)



**Call Walthamstow - 020 8509 0092 ■ [douglasallen.co.uk](http://douglasallen.co.uk)**

- A private rental licensing scheme applies to some properties in this area, please contact us before proceeding
- Legal advice should be taken to verify fixtures/fittings, planning, alterations and/or lease details
- Appliances & services are untested, dimensions are approximate and floor plans are not to scale



53117808/20250514/KS/S