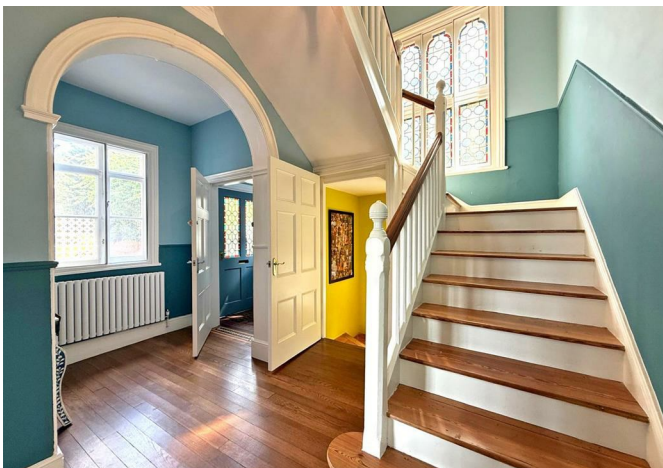


20, Canonbury, Kingsland, Shrewsbury, SY3 7AH

£4,000 Per Month



20, Canonbury, Kingsland, Shrewsbury, SY3 7AH

£4,000 Per Month

Situated in one of the finest and most exclusive settings in Shrewsbury with stunning elevated views across the river Severn, quarry park and town centre. This impressive and substantial grade II listed five bedroom detached residence offers extensive accommodation which has recently been significantly improved and upgraded throughout, along with a sizeable private landscaped garden and driveway.

Description



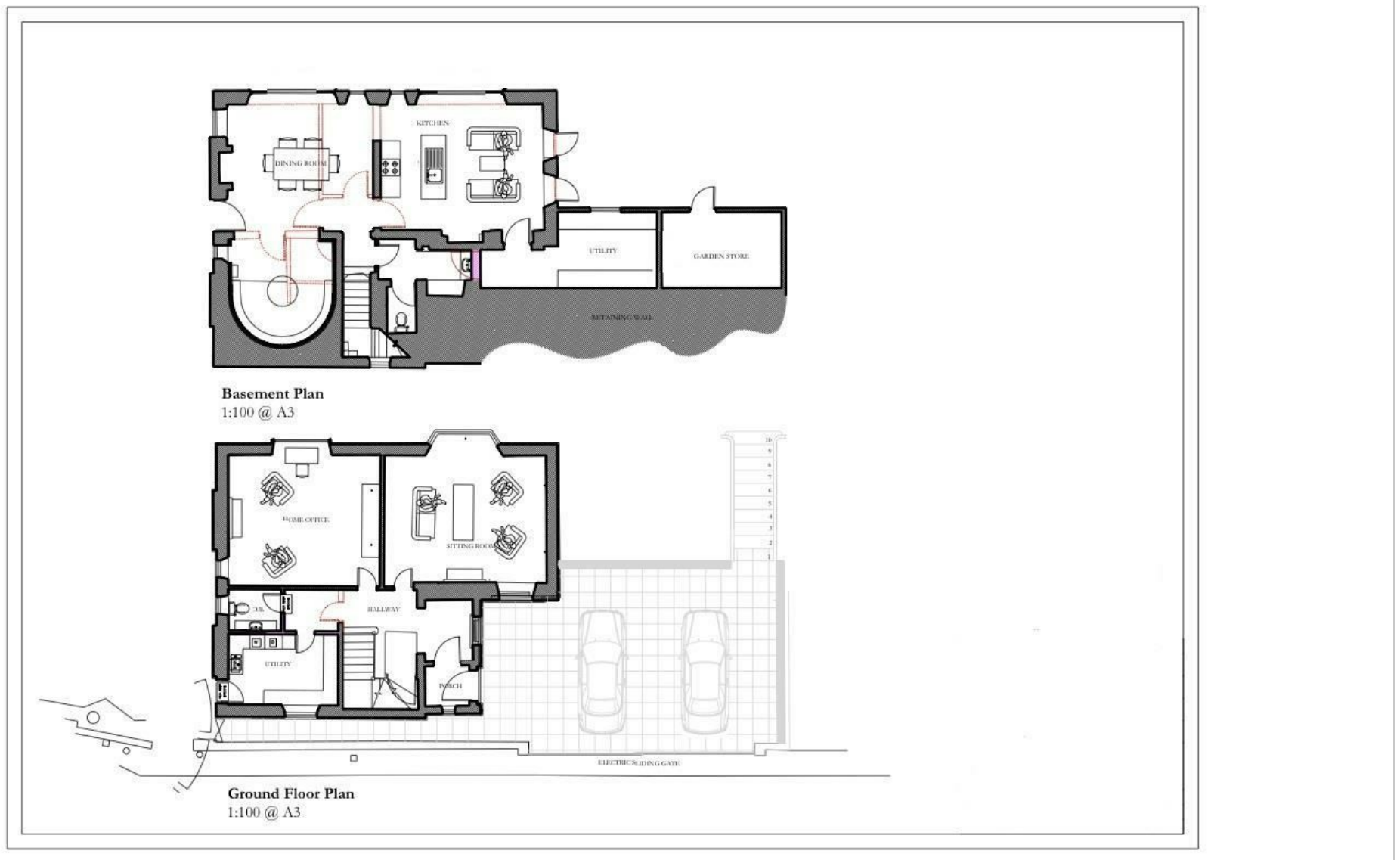
Unfurnished

Council Tax Band: G

Available: 28th August 2026

EPC:

Floor Plans



These particulars, whilst believed to be accurate are set out as a general outline only for guidance and do not constitute any part of an offer or contract. Intending purchasers should not rely on them as statements of representation of fact, but must satisfy themselves by inspection or otherwise as to their accuracy. No person in this firm's employment has the authority to make or give any representation or warranty in respect of the property.