



Vassali House,
Central Rd, LS1

ZENKO
CITY LIVING

FOR SALE

£214,950

A VERY SPACIOUS AND SIGNIFICANTLY IMPROVED ONE-BEDROOM DUPLEX APARTMENT IN A CENTRAL LOCATION.



















KAROL BRIGANDI - STARA MUZYKA
RICHARD OSMAN - The Last Devil in the East
The Last Devil in the East

LET'S GO WITH IT

1

Bedrooms

1

Bathrooms

750

Sq. Ft.



ABOUT

A very spacious and significantly improved one-bedroom duplex apartment in a central location. Many of the city's amenities are on the doorstep including the General Infirmary (18 mins), the Law Courts (14 mins), the railway station (11 mins), the Business District (18 mins) and the main shopping areas are all moments away; Briggate (2 mins), Victoria Quarter (3 mins), Victoria Gate (4 mins) and Trinity (2 mins) as well as some of the city's favourite restaurants, cafes and bars.
(All walking times taken from Google Maps)

Vassali House is a Grade II listed former warehouse originally built around 1897 and converted into 25 apartments in 2000, located parallel to Briggate between the Corn Exchange and The Victoria Quarter. It comprises five storeys with decorative façade with many of the apartments retaining period features such as exposed brickwork, high ceilings and sash windows.

HUGE ONE BED - IN EXCESS OF 750 SQUARE FEET

LARGE FEATURE WINDOWS AND HIGH CEILINGS

LOFT STYLE DUPLEX

VERY CENTRAL LOCATION

FULLY RENOVATED THROUGHOUT

EPC: C

HIGH-SPECIFICATION KITCHEN

COUNCIL TAX BAND: D

GRADE II LISTED CONVERSION WITH LOADS OF CHARACTER

LEASEHOLD



ABOUT.. continued

Vassali House is a Grade II listed former warehouse originally built around 1897 and converted into 25 apartments in 2000, located parallel to Briggate between the Corn Exchange and The Victoria Quarter. It comprises five storeys with decorative façade with many of the apartments retaining period features such as exposed brickwork, high ceilings and sash windows.

We are advised of the following leasehold terms:

Lease Length: 150 years from 2001

Ground Rent - £150 P.A

Service Charge - £2234 P.A

Heating: Electric wall mounted heaters

Water: Mains connected, via a meter

Electric supply: Mains connected, via metre

Broadband: No issues

Mobile signal: No issues

Construction type: Conversion

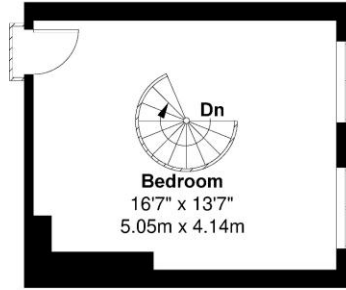
Flood Risk: None

Local Planning Permissions: NA

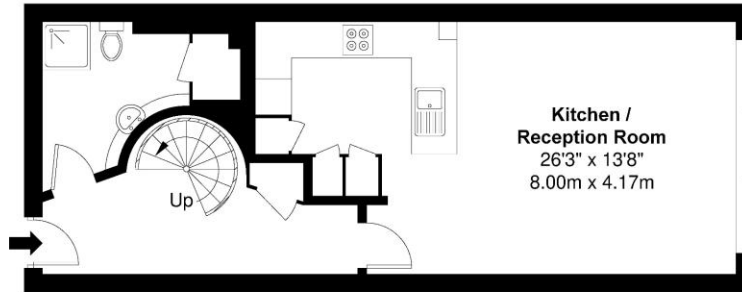








Second Floor



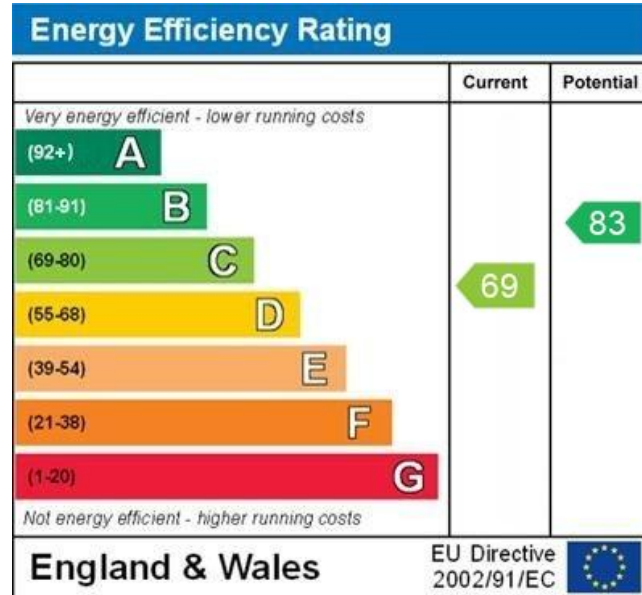
First Floor

Approx. Gross Internal Floor Area = 69.9 sq m / 752 sq ft

Illustration for identification purposes only, measurements are approximate, not to scale.



EPC



WWW.EPC4U.COM



Lease information

150 from
2001

Lease length

£2234
P.A

Service charge

£150
P.A

Ground rent



For more information or to arrange a viewing contact
Ian Darley, Zenko Properties



Zenko City Living, 2 Wharf Street,
Leeds, LS2 7EQ



0113 247 0777



ian@zenkoproperties.co.uk



www.zenkoproperties.co.uk



ZENKO
CITY LIVING