



## Hailsham Avenue, SW2

£595,000



- Split level maisonette
- Chain free
- South west facing garden
- Two bedrooms
- Own front door
- EPC:D

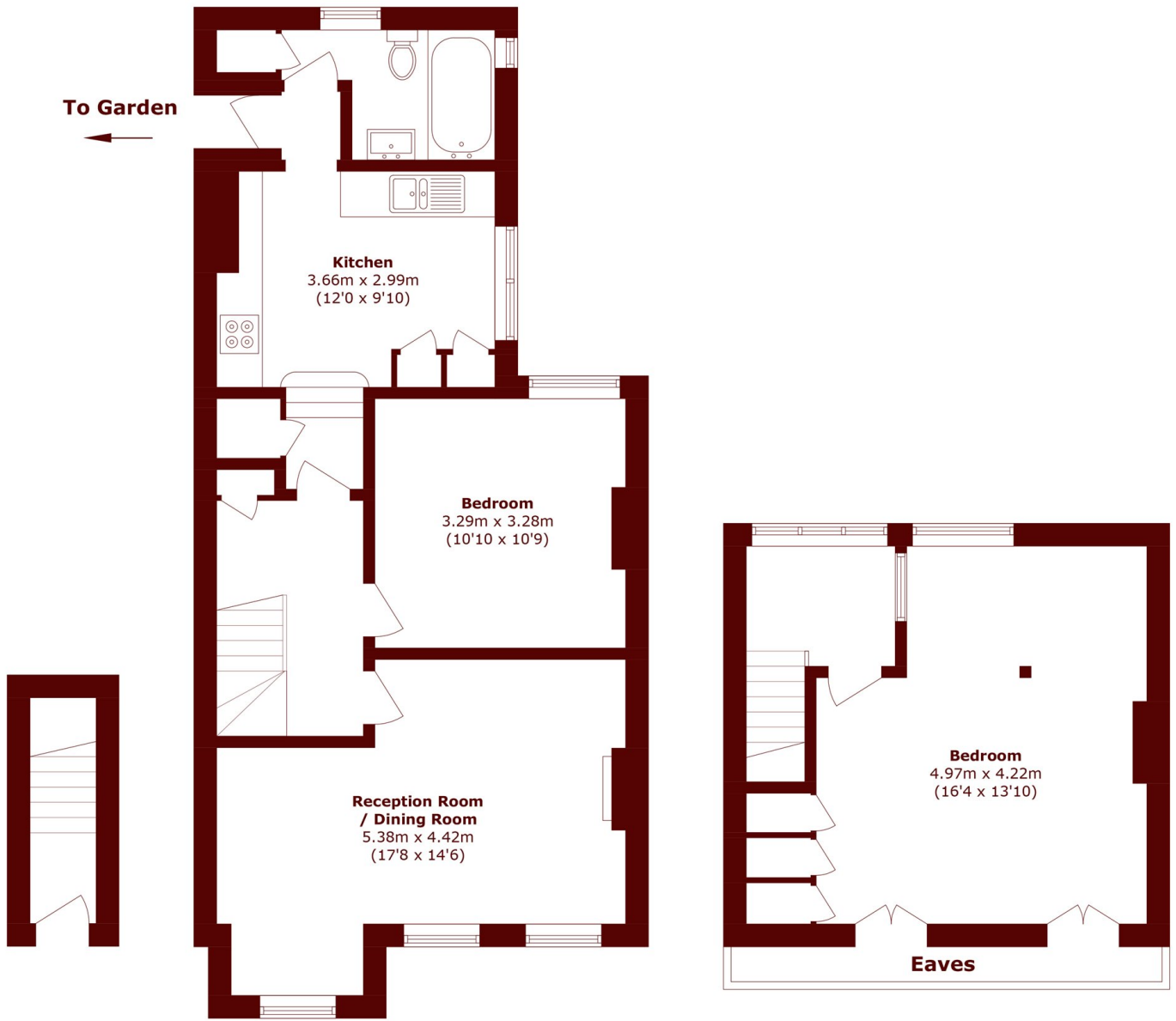


## ABOUT THE PROPERTY

Situated on a charming road, this beautiful two double bedroom maisonette is arranged over two spacious floors and finished to a high standard throughout. Boasting its own private entrance and garden, the property offers a generous separate kitchen, a bright and airy living room, and ample accommodation for family or sharers alike.

Situated within the quiet, tree-lined Leigham Hall conservation area, known locally as the "ABC Roads," the property is moments from the vibrant Streatham Hill High Road, offering an array of boutique shops, cafes, and restaurants. Hillside Gardens Park is at the top of the street, with Streatham and Tooting Bec Commons also nearby.





**Ground Floor**

**First Floor**

**Second Floor**

Total area (approx.): 84.3 sq. m (907.4 sq. ft)  
(Excluding Eaves)

**Marsh & Parsons Streatham**

113-117 Streatham Hill,  
London, SW2 4UG  
020 8671 0171

We aim to make our particulars both accurate and reliable. However, they are not guaranteed; nor do they form part of an offer or contract. If you require clarification on any points then please contact us, especially if you're traveling some distance to view. Please note that appliances and heating systems have not been tested and therefore no warranties can be given as to their good working order.