



Riverside One
22 Hester Road, SW11

CHESTERTONS





An exquisite three-bedroom sub-penthouse apartment of premium quality in pristine condition featuring an immense open plan reception-kitchen-dining room with direct views of the River Thames, three bathrooms and a large utility room.

You enter the property on the 7th floor into an impressive entrance hallway which acts as the focal point for the property. The reception, kitchen and dining area is an immense space with wall to ceiling windows along the entire length of the property allowing for spectacular viewing of the River Thames and across to Chelsea. The property sits right on the banks of the Thames giving the feeling you are overhanging the river.

- Direct River Views
- 2 Underground Parking Spaces
- Premium Quality
- Premium Furniture
- Two En-suites
- 24 Hour Concierge

£12,500 pcm

Additional tenant charges apply (fees apply to non-AST tenancies only)

Tenancy Agreement Fee: £300

References per Tenant/Guarantor: £60

Inventory check (approx. £100 – £250 inc. VAT)

chestertons.co.uk/property-to-rent/applicable-fees

Energy Efficiency Rating		
Energy efficient - lower running costs	Current	Potential
90-100 A		
81-90 B		
69-80 C	81	82
55-68 D		
49-54 E		
45-48 F		
35-44 G		
Not energy efficient - higher running costs		
EU Directive 2002/91/EC		

Minimum Term: 6 months
Deposit Required: £17,307.69
Local Authority: London Borough of Wandsworth
Council Tax Band: H
EPC Rating: B
Furnished

Chestertons Battersea Park & Nine Elms Lettings

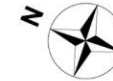
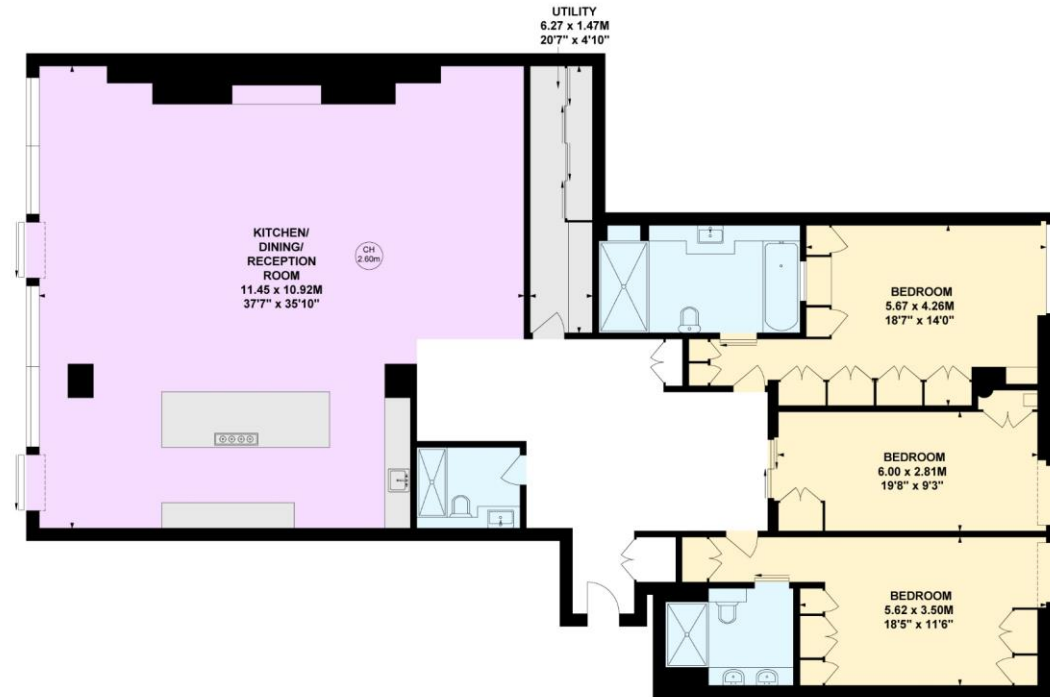
59 Battersea Bridge Road
 London
 SW11 3AU

batterseapark@chestertons.co.uk
 02030408269
chestertons.co.uk

Riverside One, Hester Road, SW11

Approximate gross internal area
255.67 sq m / 2752 sq ft

Key :
CH - Ceiling Height



Seventh Floor

Not to scale, for guidance only and must not be relied upon as a statement of fact.
All measurements and areas are approximate only

Chesterton UK Services Limited trading as Chestertons for themselves and for the vendor of this property whose agents they are, give notice that (i) these particulars do not constitute any part of an offer or contract, (ii) all statements contained within these particulars are made without responsibility on the part of Chestertons or the vendor, (iii) whilst made in good faith, none of the statements contained within these particulars are to be relied upon as a statement or representation of fact, (iv) any intending purchasers must satisfy themselves by inspection or otherwise as to the correctness of each of the statements contained within these particulars, (v) the vendor does not make or give either Chestertons or any person in their employment any authority to make or give representation or warranty whatsoever in relation to this property. Wide angle lenses may be used. ©Copyright Chestertons | Chesterton Global Ltd | Registered Office 40 Connaught Street, Hyde Park, London W2 2AB Registered Company Number 05334580.



This paper is
100% recyclable