

Knowle £149,950

1 bed flat

119 Somerset Road, BRISTOL



A spacious one bedroom garden flat in an end terrace Victorian property, occupying the ground floor and benefitting from its own private entrance. There is an 18ft living room, separate kitchen/diner, large double bedroom and three piece white bathroom suite. This property also boasts double glazing, a combi boiler, private section of rear garden and no onward chain.

- Somerset Road • garden flat • private entrance • one bedroom • living room • kitchen/diner • bathroom • private section of garden • no onward chain • tenure - leasehold • energy rating - D •

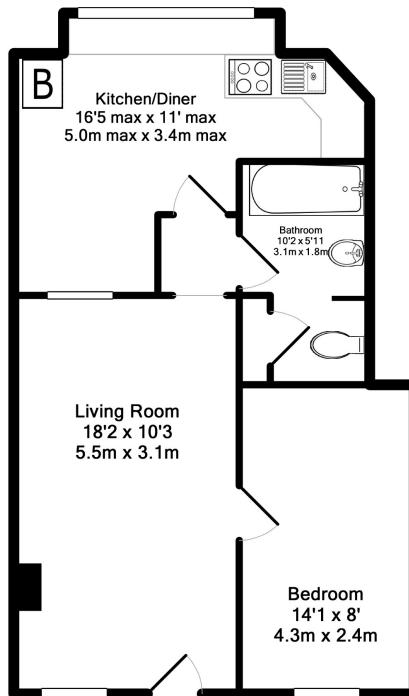






ocean

the place for...
estate agents
property lawyers
financial services
lettings & management
land & new homes
wills & probate
surveyors
you.



Floorplans not drawn to scale and are for illustrative purposes only.
Made with Metropix ©2015

Knowle Branch

321 Wells Road, Knowle, BRISTOL, BS4 2QB

Call: 0117 9773238 **Mail:** knowlesales@oceanhome.co.uk

Search: oceanhome.co.uk