



GWYNNE HOUSE, LLOYD BAKER STREET, WC1X

NULL BED ROOM

£1,200

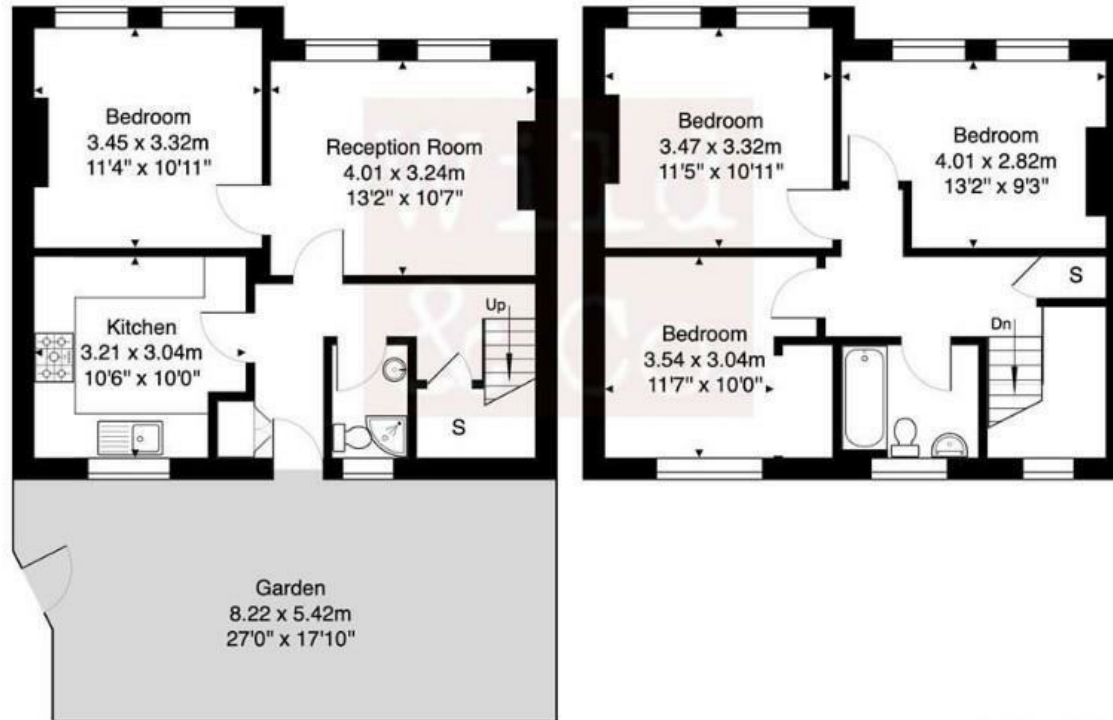
Double bedroom to rent within this four bedroom professional flat share. Split level purpose built flat arrange over ground and first floors with garden. Situated in the heart of Clerkenwell, moments' walk from Kings Cross, Farringdon and Angel Tube Stations. Benefiting from shared modern fitted kitchen, separate shared lounge, shared g/f shower room/WC, shared f/f bathroom/WC, full double glazing, shared garden, and own front door.

The property has equidistant transport links between Angel Islington, Farringdon, Russel Square and Eurostar Kings Cross tube stations. This places the property strategically close to Sadlers Wells theatre and moments from theatre land in Shafetsbury avenue. The neutral decoration is of a high standard with freshly fitted bathrooms upstairs and downstairs and a modern kitchen to envy. With flush white walls, grey flooring throughout. The splashes of ivory marble tiles in the bathroom and kitchen accent the decor wonderfully. This allows the golden taps and deep-sea turquoise wall tiles in the downstairs bathroom to shine and illuminate the ground floor.

Hemmingfords

Gwynne House- WC1X

Approximate Gross Internal Area 95.0 m² ... 1022 ft²



Energy Efficiency Rating		
	Current	Potential
Very energy efficient - lower running costs		
(92 plus) A		
(81-91) B		
(69-80) C		
(55-68) D	68	79
(39-54) E		
(21-38) F		
(1-20) G		
Not energy efficient - higher running costs		
England & Wales	EU Directive 2002/91/EC	

Agents Note: Whilst every care has been taken to prepare these particulars, they are for guidance purposes only. All measurements are approximate and are for general guidance purposes only and whilst every care has been taken to ensure their accuracy, they should not be relied upon and potential buyers/tenants are advised to recheck the measurements

Hemmingfords Lettings
34 Upper Street
London
N1 0PN

020 3890 7470
info@hemmingfords.co.uk
www.hemmingfords.co.uk

Hemmingfords