



Plot 5 Kneeton Grove , East Bridgford, NG13 8NY £379,995

A beautifully designed three-bedroom detached family home, The Tissington is an attractive and thoughtfully planned residence offering approximately 980 sq ft of stylish accommodation, perfectly suited to modern family living. Built by Peveril Homes, this impressive home combines well-proportioned interiors, practical design and contemporary open-plan spaces, creating a home that is both functional and inviting.

The ground floor has been carefully arranged with everyday family life in mind, featuring a spacious kitchen and dining room positioned to the rear of the property, offering an excellent social hub with ample space for both cooking and entertaining. A separate utility room provides additional practicality, while the generous lounge enjoys a bright dual-aspect layout with an attractive bay window, creating a comfortable and welcoming living space. A guest WC and useful understairs storage complete the ground floor.

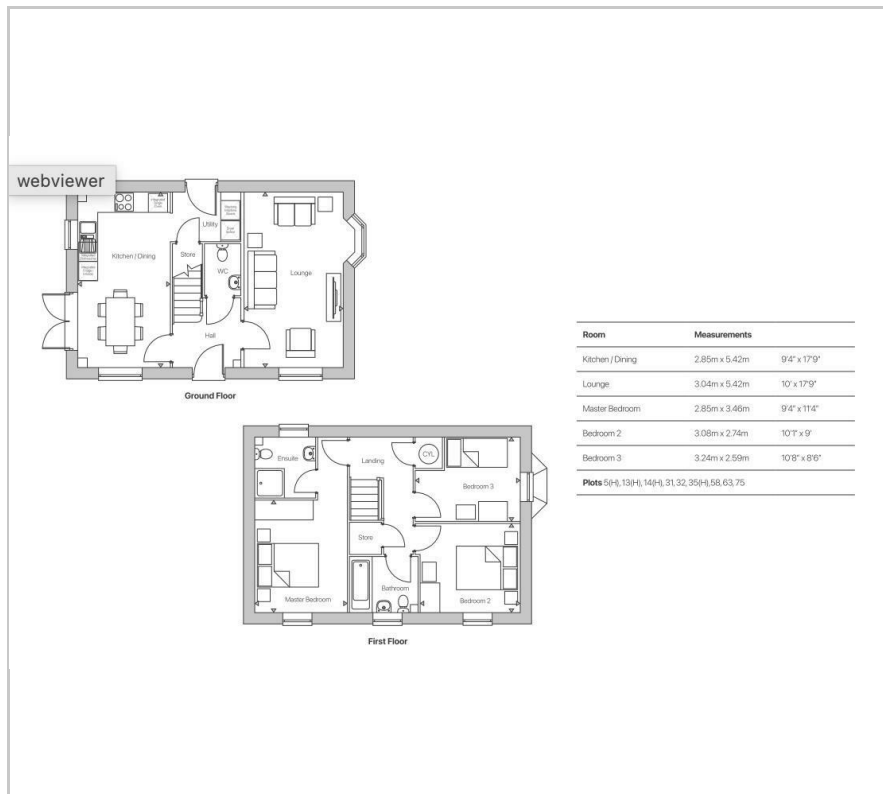
To the first floor, the principal bedroom benefits from its own private ensuite, creating a peaceful main suite. Two further well-proportioned bedrooms provide flexible accommodation for family, guests or home working, all served by a contemporary family bathroom.

Viewing

Please contact our Berkley Leicester Office on 0116 2544755 if you wish to arrange a viewing appointment for this property or require further information.



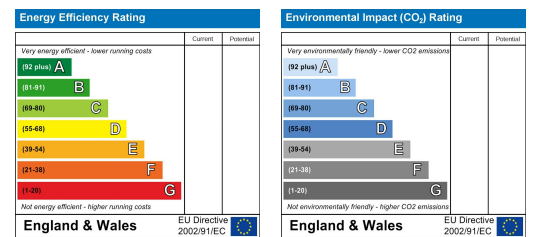
Floor Plan



Area Map



Energy Efficiency Graph



These particulars, whilst believed to be accurate are set out as a general outline only for guidance and do not constitute any part of an offer or contract. Intending purchasers should not rely on them as statements of representation of fact, but must satisfy themselves by inspection or otherwise as to their accuracy. No person in this firm's employment has the authority to make or give any representation or warranty in respect of the property.