



Cromwell Avenue, N6

£675,000

Converted from an elegant late Victorian residence, an impressive two bedroom garden flat with own private entrance offering high ceilings and period character throughout.

Ideally positioned midway along the road, the property enjoys convenient access to Highgate Underground Station, as well as the open green spaces of Waterlow Park

Features

- Two Bedrooms
- Bathroom
- Large Reception Room
- Open Plan Kitchen
- Garden
- Close To Transport



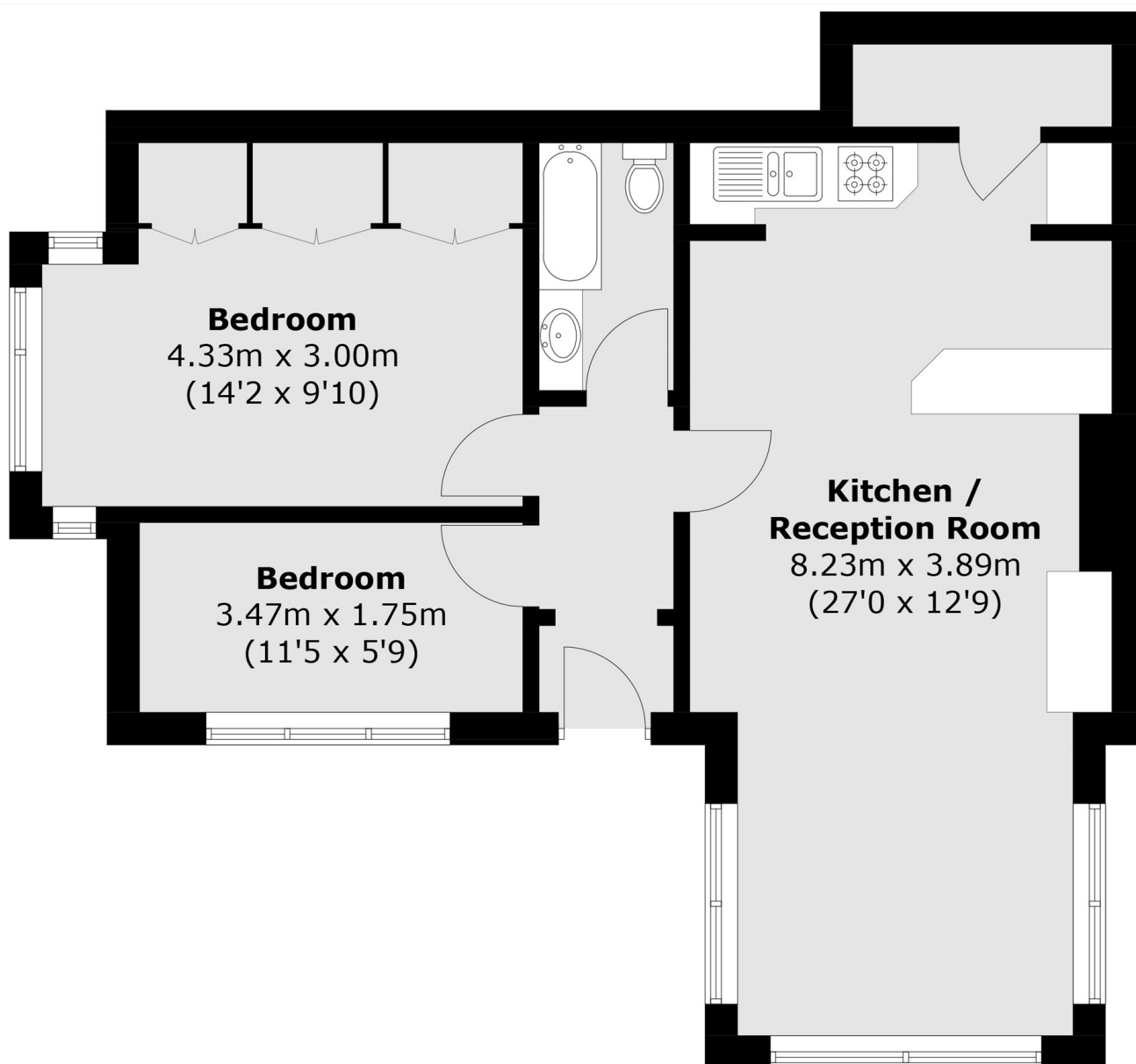
Cromwell Avenue, N6

A charming tiled pathway leads to the original entrance doorway, setting the tone for the property's timeless appeal. A generous wraparound garden offers excellent outdoor space, ideal for relaxing or entertaining.

The cafés, boutiques and vibrant atmosphere of Highgate Village are also just a short stroll away, providing the perfect balance of tranquillity and community living.



Cromwell Avenue, LONDON, N6



Ground Floor

Total area (approx.): 60.6 sq. m (652.3 sq. ft)