



## Madeley Road, W5

£750,000

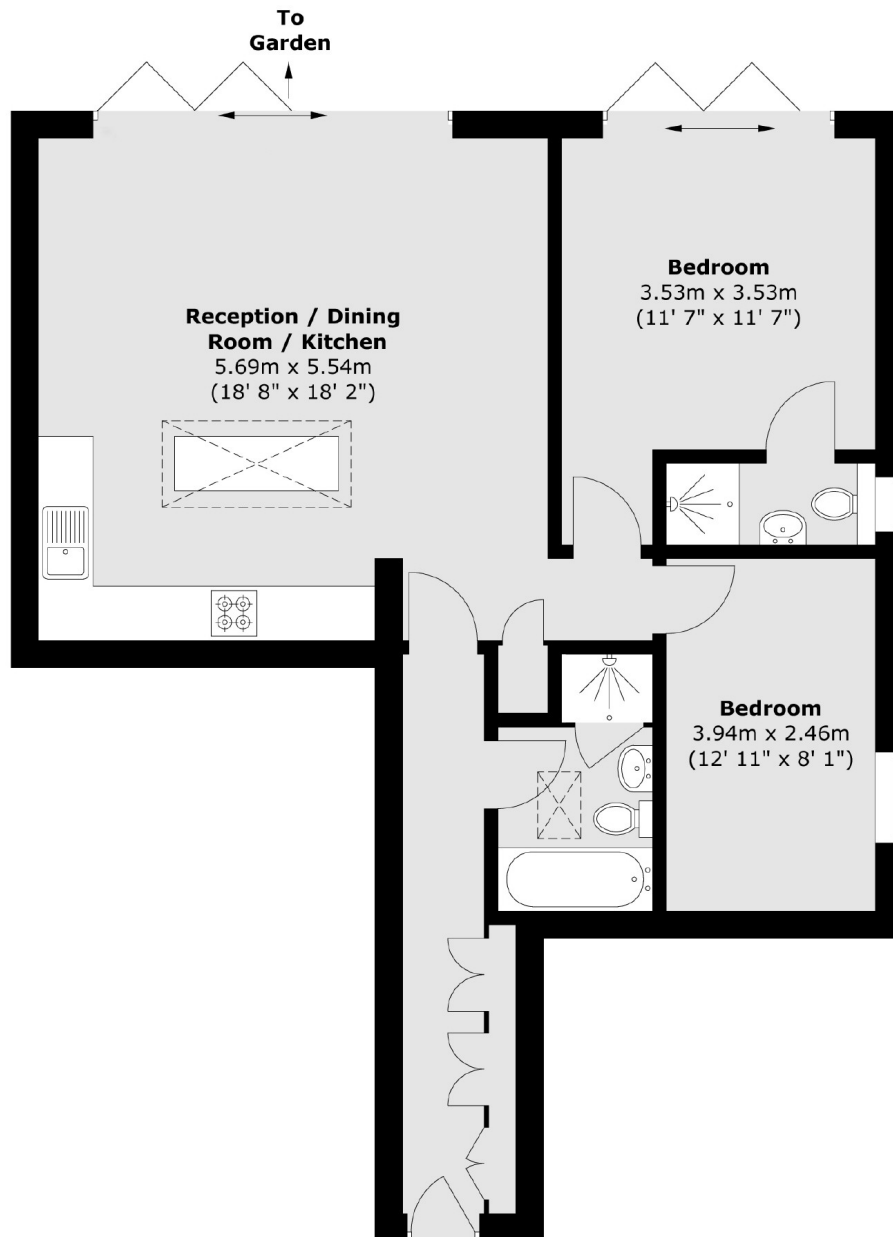
Ideally suited for indoor-outdoor living, this immaculate two-bedroom, two-bathroom ground floor flat boasts a bright, open-plan layout that flows directly onto a sizeable private garden. Alongside your own outdoor space, you'll enjoy access to large communal gardens and the convenience of allocated off-street parking.

Located within minutes of Ealing Broadway station with the new Elizabeth line, District and Central lines along with national rail services. All the shops, restaurants and amenities you could need are on your doorstep.

### Features

- Two Bedrooms
- Two Bathrooms
- Private Garden
- Allocated Parking
- Close to Transport
- Chain Free

# Madeley Road, London, W5



Total area (approx.) : 74.2 sq. m (799 sq. ft)