



Jordan fishwick

ALTRINCHAM
29 Barrington Road



29 Barrington Road, Altrincham, WA14 1HP

Asking Price £227,500



The Property

NO ONWARD CHAIN. Jordan Fishwick are proud to present to market for sale, this recently refurbished two bedroom ground floor apartment located within walking distance of Altrincham town centre and local transport links.

The property boasts a private entrance with hallway, lounge diner, modern kitchen, wet room and two separate bedrooms. There is ample natural lighting throughout and views over the communal garden which is bordered by mature shrubs and bushes, as well as allocated parking and garage.

The apartment is great for first time buyers, young professionals, landlords and downsizers. Viewings are strongly advised to appreciate this modern and versatile property.

Directions

WA14 1HP



- No Onward Chain
- Leasehold - 999 year Term
- Service Charge £2,040 p.a. (£170pcm)
- £0 Ground Rent
- Garage and Off Road Parking
- Recently Refurbished
- Ground Floor with Private Entrance
- Walking Distance to Altrincham Town Centre
- Potential to install an EV charger at the property

Postcode - WA14 1HP

EPC Rating - C

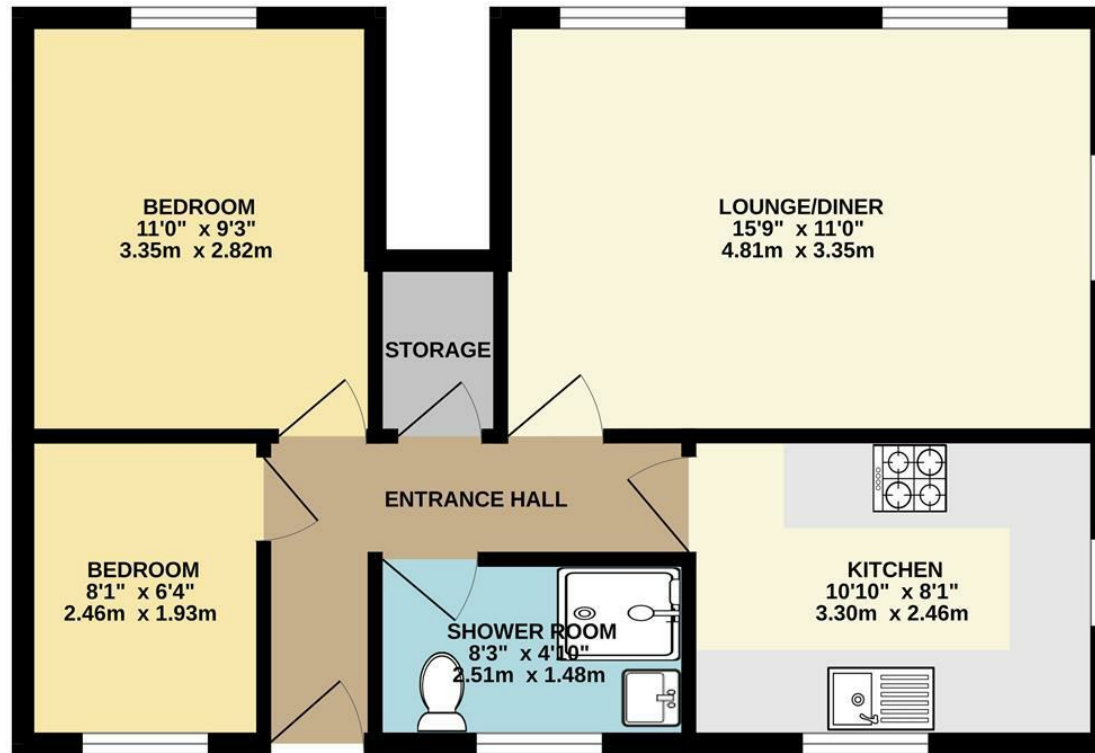
Floor Area - 580.00 sq ft

Local Authority - Trafford

Council Tax - B



GROUND FLOOR
580 sq.ft. (53.9 sq.m.) approx.



TOTAL FLOOR AREA: 580 sq.ft. (53.9 sq.m.) approx.

Whilst every attempt has been made to ensure the accuracy of the floorplan contained here, measurements of doors, windows, rooms and any other items are approximate and no responsibility is taken for any error, omission or mis-statement. This plan is for illustrative purposes only and should be used as such by any prospective purchaser. The services, systems and appliances shown have not been tested and no guarantee as to their operability or efficiency can be given.
Made with Metropix ©2025



These particulars are believed to be accurate but they are not guaranteed and do not form a contract. Neither Jordan Fishwick nor the vendor or lessor accept any responsibility in respect of these particulars, which are not intended to be statements or representations of fact and any intending purchaser or lessee must satisfy himself by inspection or otherwise as to the correctness of each of the statements contained in these particulars. Any floorplans on this brochure are for illustrative purposes only and are not necessarily to scale.

Offices at: Chorlton, Didsbury, Disley, Hale, Glossop, Macclesfield, Manchester Deansgate, Manchester Whitworth Street, New Mills, Sale, Wilmslow and Withington

0161 929 9797

hale@jordanfishwick.co.uk
www.jordanfishwick.co.uk