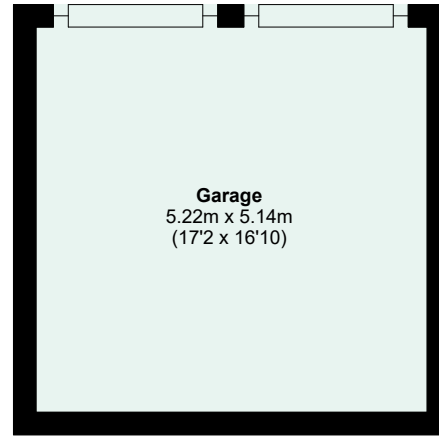
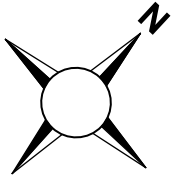


Approximate Area = 1781 sq ft / 165.4 sq m

Garage = 288 sq ft / 26.7 sq m

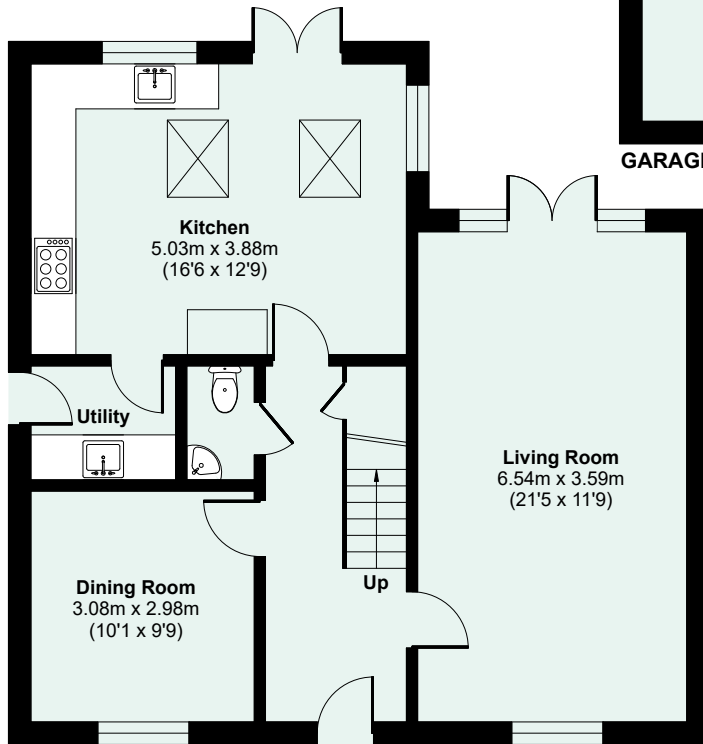
Total = 2069 sq ft / 192.1 sq m

For identification only - Not to scale



Garage
5.22m x 5.14m
(17'2 x 16'10)

GARAGE



Kitchen
5.03m x 3.88m
(16'6 x 12'9)

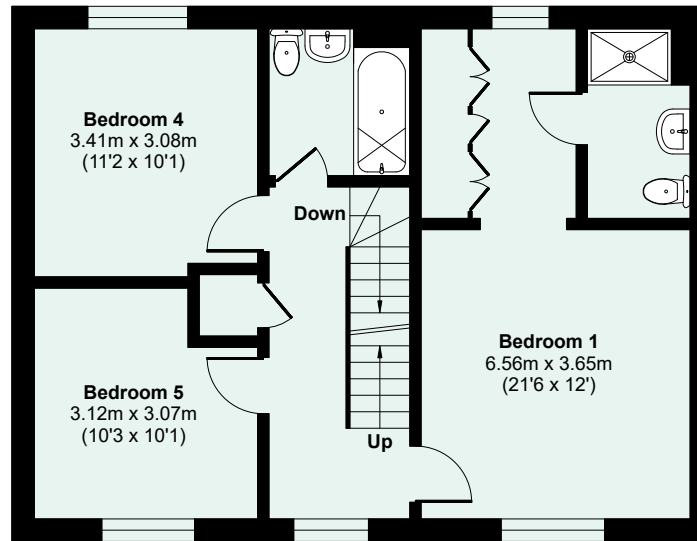
Utility

Dining Room
3.08m x 2.98m
(10'1 x 9'9)

Living Room
6.54m x 3.59m
(21'5 x 11'9)

Up

GROUND FLOOR



Bedroom 4
3.41m x 3.08m
(11'2 x 10'1)

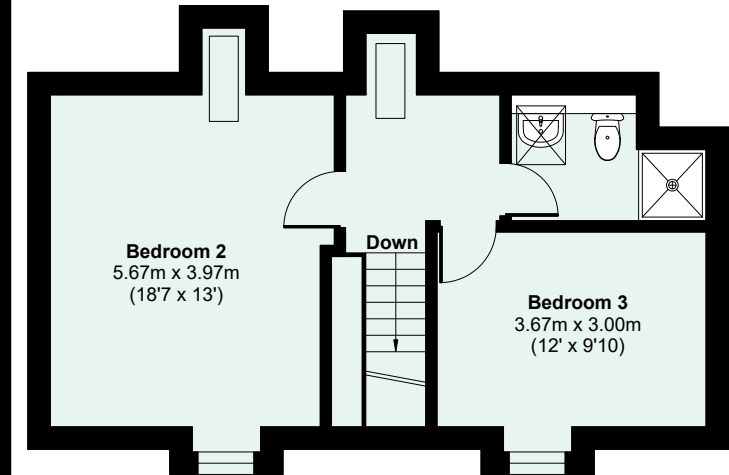
Bedroom 5
3.12m x 3.07m
(10'3 x 10'1)

Bedroom 1
6.56m x 3.65m
(21'6 x 12')

Down

Up

FIRST FLOOR



Bedroom 2
5.67m x 3.97m
(18'7 x 13')

Bedroom 3
3.67m x 3.00m
(12' x 9'10)

Down

SECOND FLOOR



Floor plan produced in accordance with RICS Property Measurement 2nd Edition, Incorporating International Property Measurement Standards (IPMS2 Residential). © nitchecom 2026. Produced for Seddon Estate Agents LLP. REF: 1456054

