



Jordan Road, Four Oaks,
Sutton Coldfield, B75 5AB

£825,000

Spread across three welcoming floors, this lovely home offers a warm and comfortable space perfectly suited to everyday family living.

The ground floor welcomes you with a bright entrance hall, leading to a convenient boot room—ideal for keeping everyday essentials neatly tucked away. To the front, a cosy living room provides a relaxing retreat, while a separate family room offers additional space for entertaining or unwinding. The heart of the home is the impressive open-plan kitchen and family area, designed for both cooking and socialising, complemented by a handy utility room.

On the first floor, you'll find four well-proportioned bedrooms along with a family bathroom, providing comfortable accommodation for growing families or guests. The second floor features two further bedrooms, offering flexible space that could be used as a home office, or hobby rooms.

Outside, the property boasts a generously sized garden—perfect for outdoor dining, play, or simply enjoying some fresh air.

Jordan Road is approached from Lichfield Road or Mere Green Road and enjoys a sought after location in a desirable residential area of Four Oaks. All amenities are on the doorstep with Mere Green shopping centre providing a comprehensive range of shops, supermarkets, restaurants and fine bistro dining. Local public transport services including Four Oaks railway station provides commuters with ease of access to Birmingham, Lichfield and Sutton Coldfield. The area is well served by primary and secondary schools.

Viewings: Strictly via appointment through our Four Oaks Residential Sales Department on 0121 308 3737

or via Fouroaks@paulcarrestateagents.co.uk



**PAUL
CARR**
Estate Agents
Sales & Lettings

Hall

Boot Room

Family Room 4.09m (13'5") x 3.94m (12'11") max

Porch

Living Room 5.89m (19'4") x 4.06m (13'4")

WC

Kitchen/Family Area 5.92m (19'5") x 3.23m (10'7")

Utility 3.19m (10'6") x 1.85m (6'1")

Garage

Landing

Bedroom 1 4.42m (14'6") x 4.09m (13'5")

Bathroom

WC

Bedroom 2 4.06m (13'4") x 3.96m (13')

En-suite

Bedroom 3 4.50m (14'9") x 2.84m (9'4")

Bedroom 4 2.67m (8'9") x 1.93m (6'4")

Landing

Bedroom 5 4.50m (14'9") x 3.84m (12'7")

En-suite

Bedroom 6 2.87m (9'5") x 2.64m (8'8")





Floor Plan

This floor plan is not drawn to scale and is for illustration purposes only

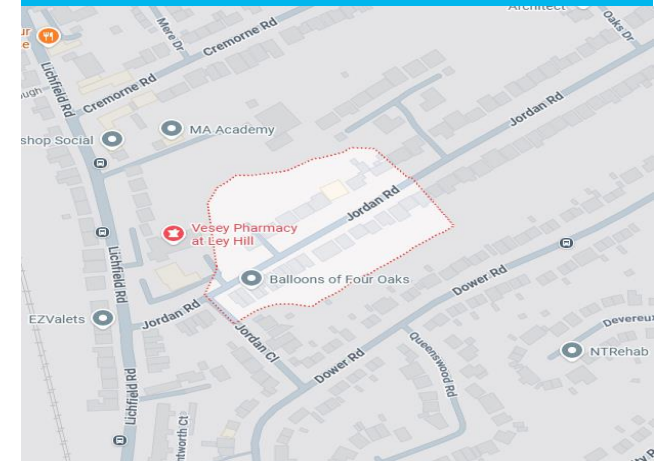


Total area: approx. 240.1 sq. metres (2584.4 sq. feet)

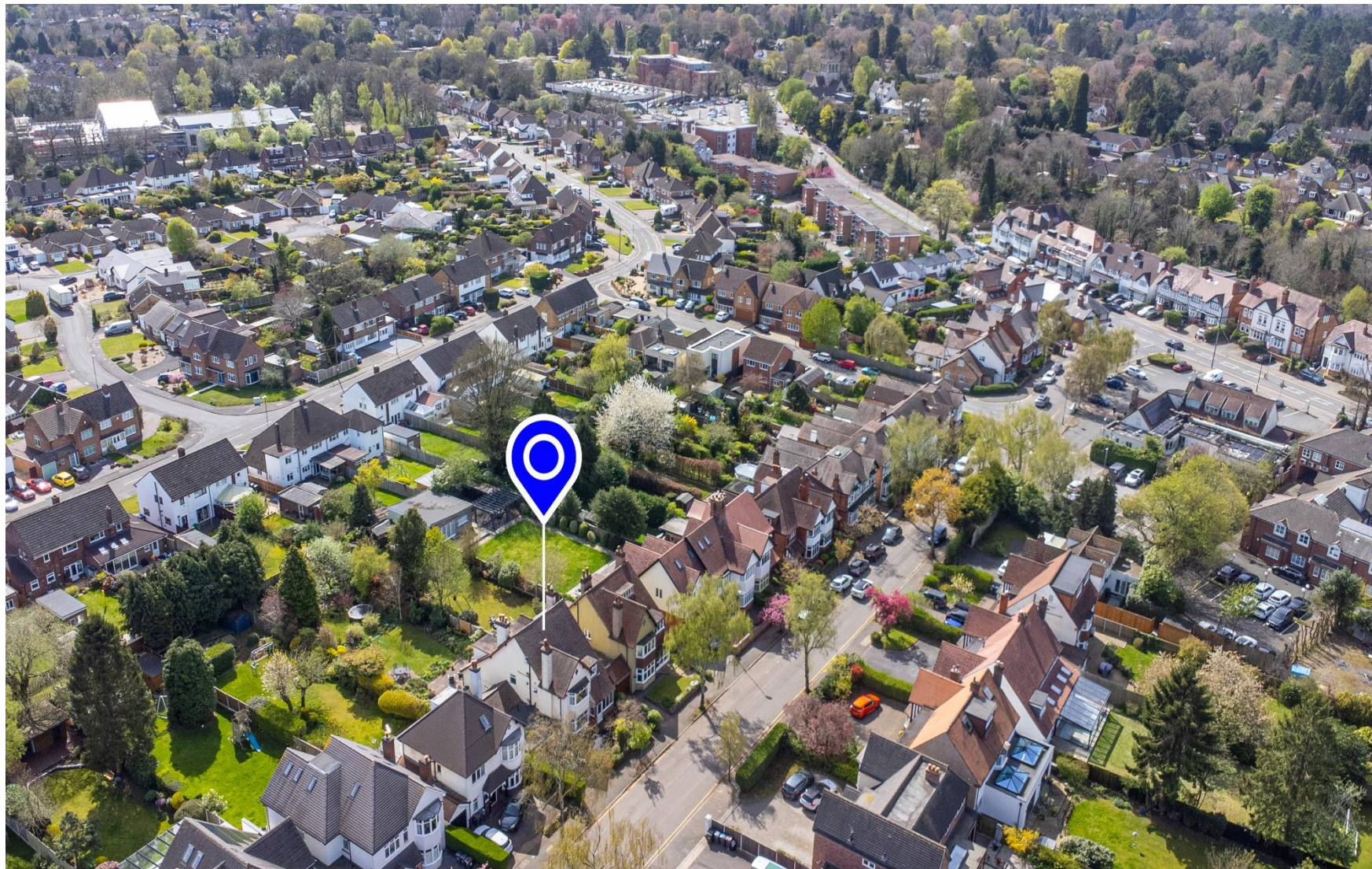
This floor plan is not drawn to scale and is for illustration purposes only
Plan produced using PlanUp.

Energy Performance Rating

Map Location







Agent's Note:

Every care has been taken with the preparation of these Sales Particulars but they are for general guidance only and complete accuracy cannot be guaranteed. If there is any point which is of particular importance, professional verification should be sought. The mention of any fixtures, fittings and/or appliances does not imply they are in full efficient working order as they have not been tested. All dimensions are approximate. Photographs are reproduced for general information and it cannot be inferred that any item shown is included in the sale. These Sales Particulars do not constitute a contract or part of a contract. Came on the market:

Identity Verification Fee - We are required by law to conduct anti-money laundering checks on all those buying a property as part of our due diligence. As agents acting on behalf of the seller, we are required to verify the identity of all purchasers once an offer has been accepted, subject to contract. The initial checks are carried out on our behalf by Lifetime Legal . A non-refundable administration fee of £40 + VAT (£48 including VAT) applies which covers the cost of obtaining relevant data and any manual checks and monitoring which might be required. This fee will need to be paid by you in advance of us issuing a memorandum of sale, directly to Lifetime Legal, and is non-refundable.