



## ELLIOTT ROAD, W4

£8,500 per month

Five bedrooms  
Three bathrooms  
Modern interior  
Private garden  
Centrally located  
Energy rating: c

@marshandparsons  
marshandparsons.co.uk

MARSH &  
PARSONS

# ABOUT THE PROPERTY

A beautifully presented five-bedroom family home in the heart of Chiswick, offering stylish interiors and generous living space throughout. Featuring a spacious reception room, a stunning open-plan kitchen/dining area opening onto a private garden via bifold doors, five double bedrooms, and three contemporary bathrooms.

Set on a peaceful residential road, this beautifully presented home is just a short stroll from the vibrant lifestyle offerings of Chiswick High Road and within easy reach of Turnham Green Station, providing excellent connectivity into Central London.

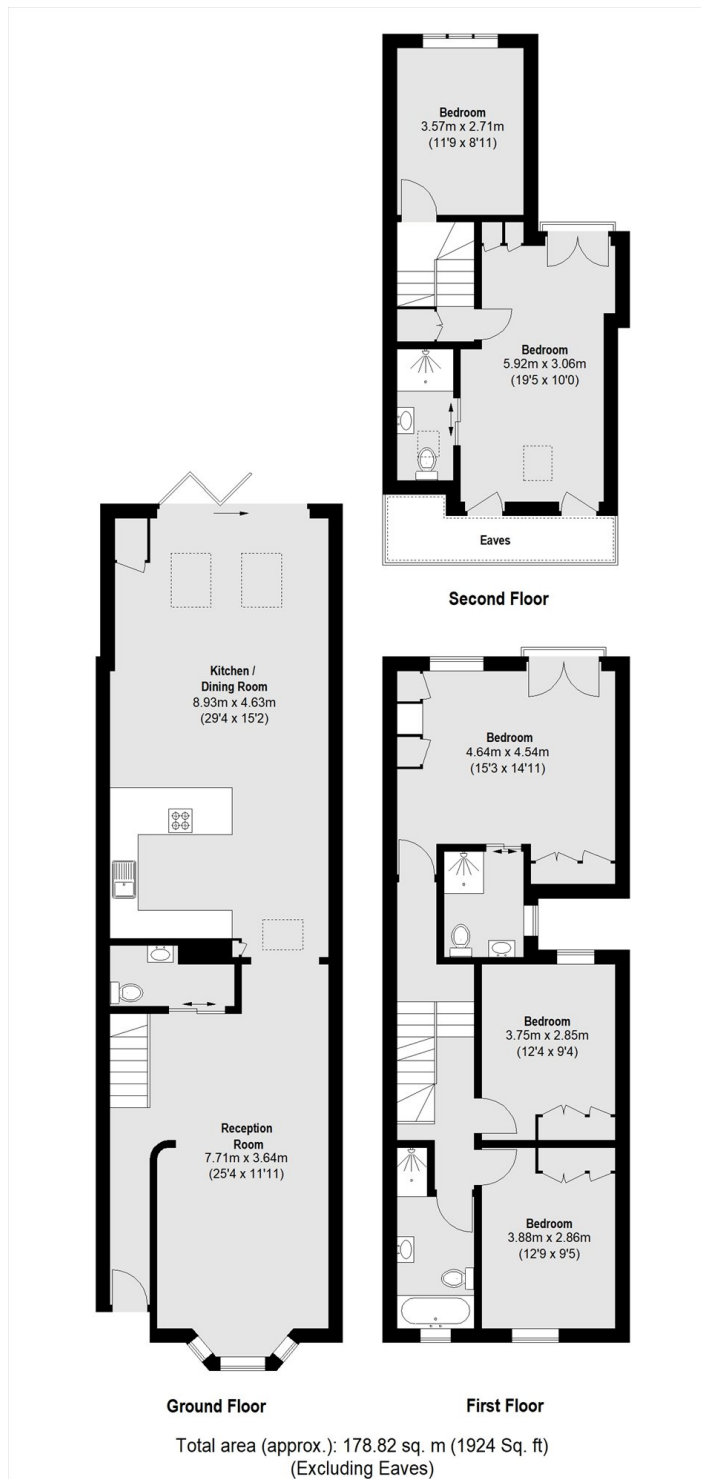








# STEP INSIDE ELLIOTT ROAD



Chiswick  
020 8629 0900

Energy Rating: C We aim to make our particulars both accurate and reliable. However, they are not guaranteed; nor do they form part of an offer or contract. If you require clarification on any points then please contact us, especially if you're traveling some distance to view. Please note that appliances and heating systems have not been tested and therefore no warranties can be given as to their good working order

MARSH &  
PARSONS