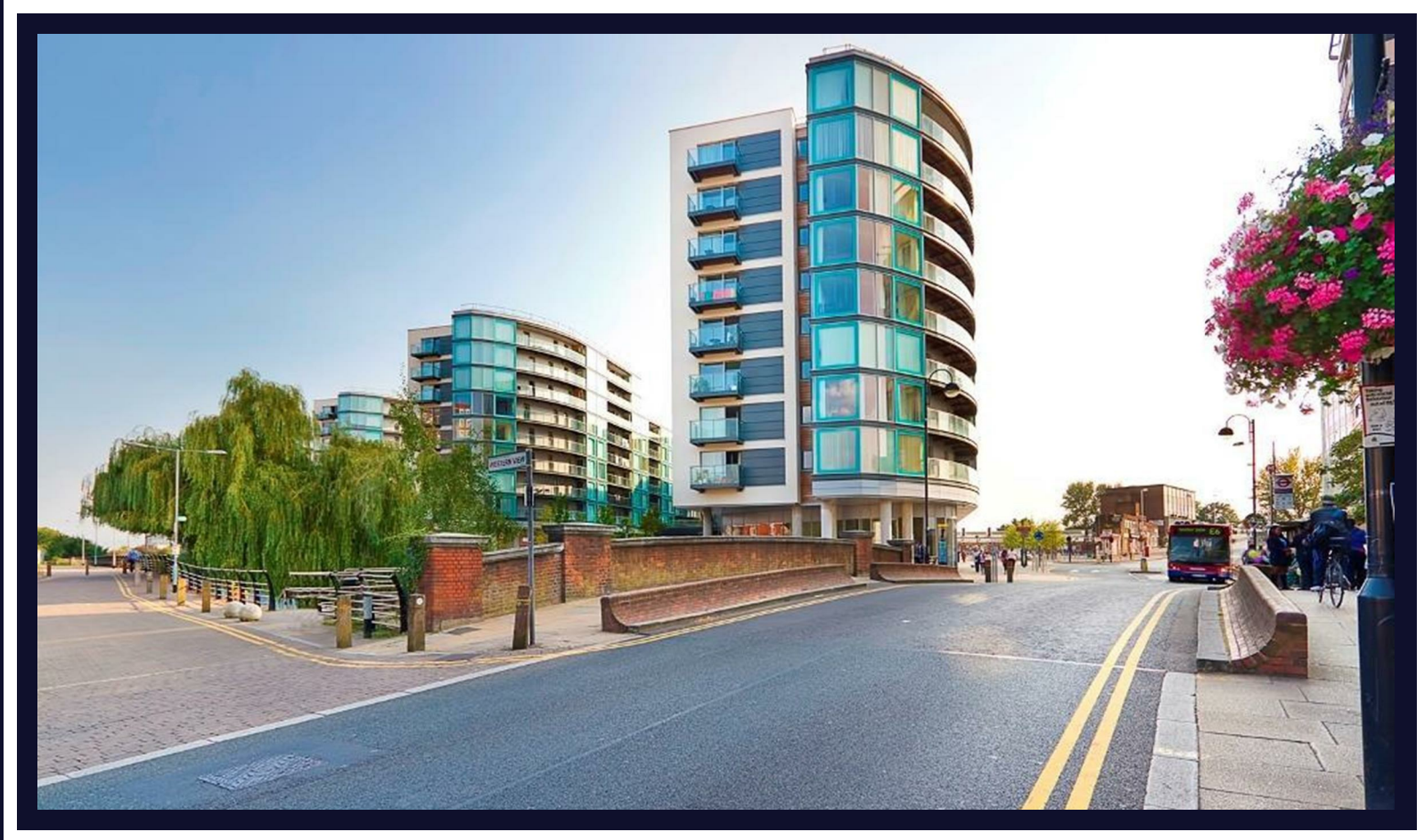


Cardinal Building

Station Approach • Hayes • UB3 4FE
PCM: £1,500 PCM



coopers
est 1986

A well presented fifth floor apartment with stunning views situated in a prime location for those who commute. Heathrow and central London are just moment away. Finished to a high specification throughout and just a stone`s throw from Hayes & Harlington train station. Shopping facilities, bars and restaurants on your doorstep Accommodation; Open-plan Lounge to kitchen with door leading to private balcony, bedroom with fitted wardrobe, Modern bathroom, fully fitted kitchen with appliances. Concierge, Gymnasium, Swimming pool. FURNISHED

Modern Development

Gym

Concierge

Moments From Hayes & Harlington Station

Elizabeth Line

Furnished

Fitted Kitchen With Appliances

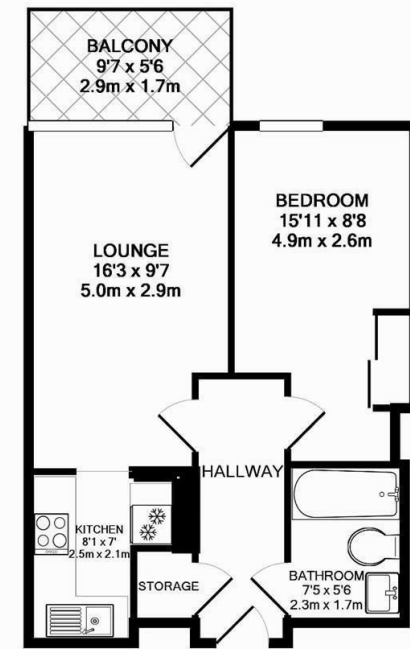
Private Balcony

Council tax band C

Nearby to Heathrow Airport

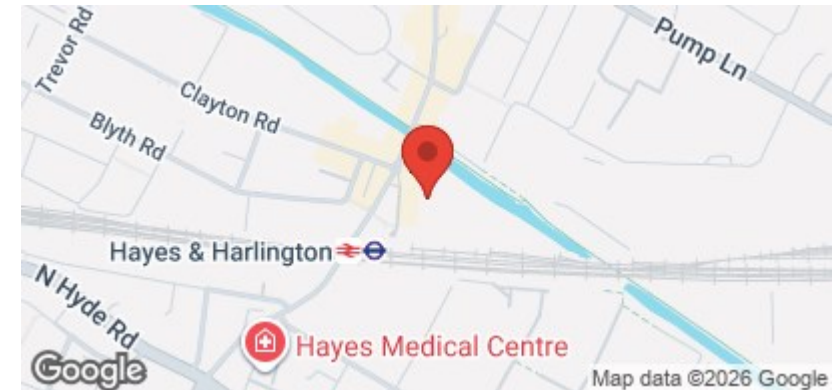
Available Date

22nd June 2026



TOTAL APPROX. FLOOR AREA 424 SQ.FT. (39.4 SQ.M.)

Whilst every attempt has been made to ensure the accuracy of the floor plan contained here, measurements of doors, windows, rooms and any other items are approximate and no responsibility is taken for any error, omission, or mis-statement. This plan is for illustrative purposes only and should be used as such by any prospective purchaser. The services, systems and appliances shown have not been tested and no guarantee as to their operability or efficiency can be given
Made with Metropix ©2015



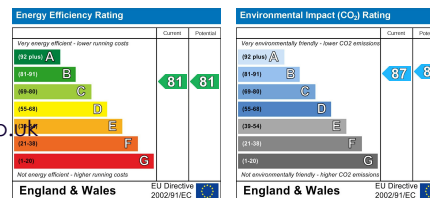
coopers
est 1986

01895 257 566

1 Vine Street, Uxbridge,
Middlesex, UB8 1QE

propertymanagement@coopersresidential.co.uk

CoopersResidential.co.uk



Important Notice: These particulars, whilst believed to be accurate are set out as a general outline only for guidance and do not constitute any part of an offer or contract. Intending purchasers should not rely on them as statements or representation of fact, but must satisfy themselves by inspection or otherwise has the authority to make or give any representation or warranty in respect of the property.