
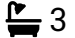





Victoria Bolt
estate agents POWERED BY **exp** UK

Periwinkle Drive, Plympton

Guide Price £465,000

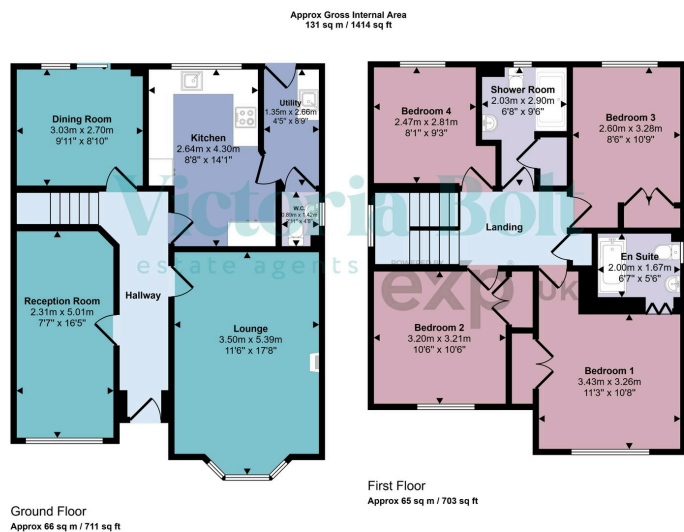
 4  3  3



- Detached family home offered for sale with no onward chain
- Four genuine double bedrooms
- Modern kitchen replaced around two years ago
- Three bedrooms with fitted wardrobes
- Replacement windows and doors
- Over 1,400 sq ft of accommodation
- Three versatile reception rooms
- Landscaped, low-maintenance rear garden
- Owned solar panels and EV charging point
- Driveway parking and converted garage offering excellent storage or potential for a home office/playroom



Situated on the popular Periwinkle Drive in Plympton, this spacious four-bedroom detached home offers over 1,400 sq ft of well-maintained accommodation and is available with no onward chain. Having been updated by the current owners, including a modern kitchen, replacement windows and doors, updated bathrooms and a landscaped garden, this is a genuine move-in home. With four double bedrooms, three reception rooms, driveway parking, owned solar panels and an EV charger, it is perfectly suited to modern family living.



This floorplan is only for illustrative purposes and is not to scale. Measurements of rooms, doors, windows, and any items are approximate and no responsibility is taken for any error, omission or mis-statement. Icons of items such as bathroom suites are representations only and may not look like the real items. Made with Made Snappy 360.

