



3



2



1



B



Description

We are delighted to offer this beautifully presented three-bedroom end-of-terrace house, located in the popular area of Tarring. The property features a bright bay-fronted living room opening to a modern kitchen/dining area, a well-maintained rear garden with driveway access, and three spacious bedrooms upstairs. Additional benefits include a family bathroom and the remainder of a ten-year NHBC warranty, making this a move-in ready home in a sought-after location.

Key Features

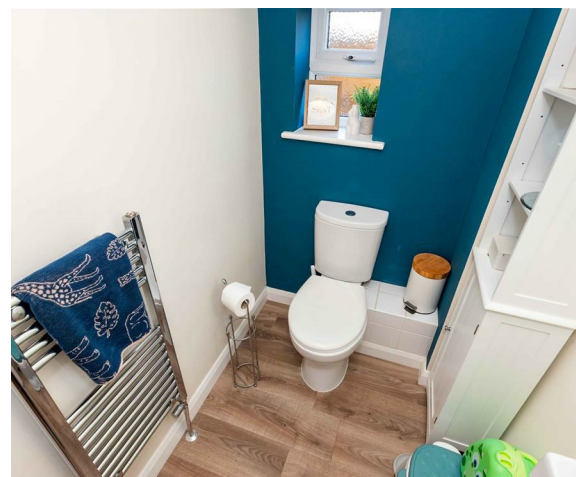
- Three-bedroom end-of-terrace house in Tarring
- Bright bay-fronted living room with sliding doors to kitchen/diner
- Modern kitchen/dining area with integrated appliances and French doors to garden
- Ground floor WC with contemporary fixtures
- Well-maintained rear garden with patio, lawn, pergola, and side/rear access
- Off-road parking for one vehicle via rear driveway
- Three spacious bedrooms, including a bay-fronted master with built-in wardrobes
- Family bathroom with shower over bath, tiled flooring, and modern fittings
- Remainder of ten-year NHBC warranty for peace of mind
- Council Tax Band C | EPC Rating B



robertluff.co.uk

30 Guildbourne Centre, Worthing, West Sussex, BN11 1LZ | 01903 331247 | info@robertluff.co.uk

Robert
Luff & Co



Entrance Hall

Double glazed composite door to front.

Living Room

Double glazed bay window to front, double sliding doors to kitchen/diner, radiator, phone point and under stairs cupboard.

Kitchen/Diner

Modern fitted kitchen with range of wall and base units, plumbing for washing machine and dishwasher, double glazed window to rear and side, integrated electric double oven, integrated induction hob, cooker hood, one and half bowl sink/drain, tiled splashback, two radiators and double glazed french doors to rear garden.

Ground Floor WC

Double glazed frosted window to side, dual button WC, towel radiator, wash hand basin set in vanity unit, and extractor fan.

Landing

Double glazed frosted window to side and loft access.

Bedroom One

Double glazed bay window to front, radiator, and built-in wardrobes.

Bedroom Two

Double glazed window to rear and radiator.

Bedroom Three

Double glazed window to front, feature wood panel wall, radiator, large over stairs storage cupboard.

Bathroom

Panel enclosed bath with shower over, tiled floor, double glazed frosted window to rear, part tiled walls, towel radiator, extractor fan, dual button WC, shaver point, and single pedestal wash hand basin.

Rear Garden

Large patio area, pergola over part of the patio, outside tap and power, fence enclosed, gated side access, lawn area, gated rear access to parking space.

Driveway

Off road parking for one vehicle.



robertluff.co.uk

30 Guildbourne Centre, Worthing, West Sussex, BN11 1LZ | 01903 331247 | info@robertluff.co.uk

Robert
Luff & Co

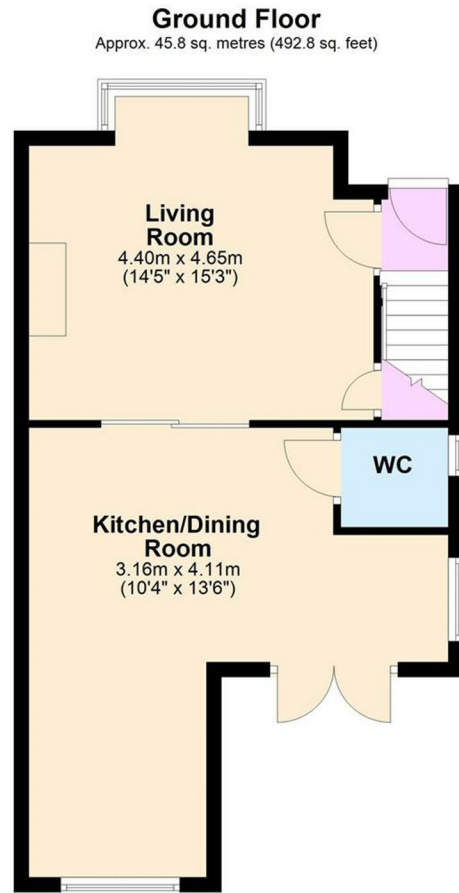


robertluff.co.uk

30 Guildbourne Centre, Worthing, West Sussex, BN11 1LZ | 01903 331247 | info@robertluff.co.uk

Robert
Luff & Co

Floor Plan Ringmer Road



Total area: approx. 86.8 sq. metres (934.1 sq. feet)



Energy Efficiency Rating		Current	Potential
Very energy efficient - lower running costs			
(92 plus)	A		93
(81-91)	B	82	
(69-80)	C		
(55-68)	D		
(39-54)	E		
(21-38)	F		
(1-20)	G		
Not energy efficient - higher running costs			
England & Wales		EU Directive 2002/91/EC	

The information provided about this property does not constitute or form any part of an offer or contract, nor may it be regarded as representations. All interested parties must verify accuracy and your solicitor must verify tenure/lease information, fixtures and fittings and, where the property has been extended/converted, planning/building regulation consents. All dimensions are approximate and quoted for guidance only as are floor plans which are not to scale and their accuracy cannot be confirmed. References to appliances and/or services does not imply that they are necessarily in working order or fit for the purpose.

robertluff.co.uk

30 Guildbourne Centre, Worthing, West Sussex, BN11 1LZ

01903 331247 | info@robertluff.co.uk

Robert
Luff & Co