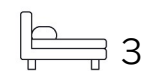


Living
made
better

Gateway Tower
Royal Victoria Dock, E16 1YN



Asking Price £615,000

Gateway Tower, Royal Victoria Dock, E16 1YN

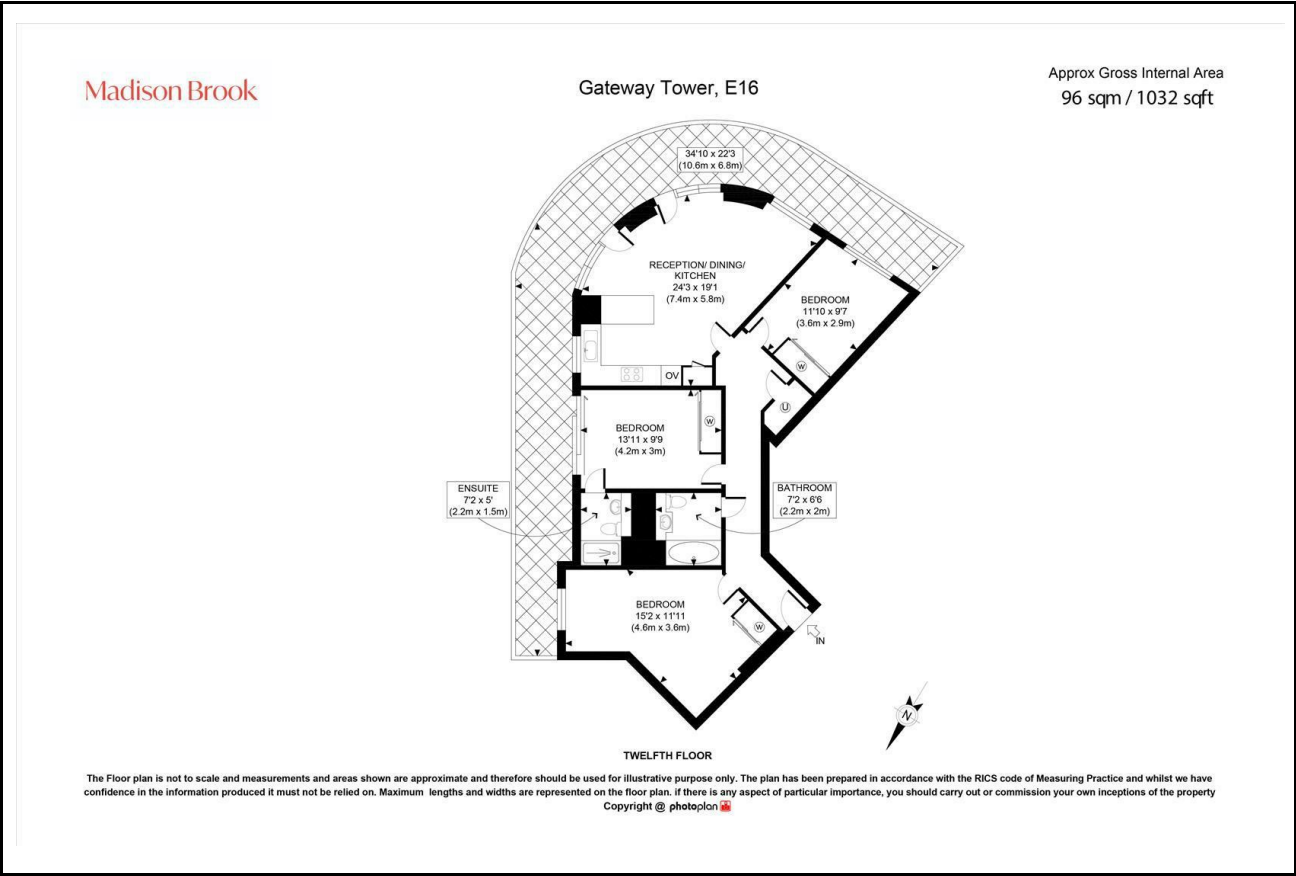
Madison Brook

Property Summary

Set on the 12th floor of the Gateway Tower, this impressive three-bedroom, two-bathroom apartment offers over 1,030 sq.ft. of modern living space with views of the River Thames and O2 Arena. The bright open-plan kitchen and reception area features floor-to-ceiling windows and access to a wrap-around balcony. The principal bedroom includes an en-suite shower room, complemented by two additional bedrooms and a stylish family bathroom. Residents benefit from a 24-hour concierge, allocated parking, and excellent transport links via Royal Victoria DLR and the Elizabeth line.

Service charge: £6091.12 pa | Ground rent: £450 pa | Lease: 148 years remaining

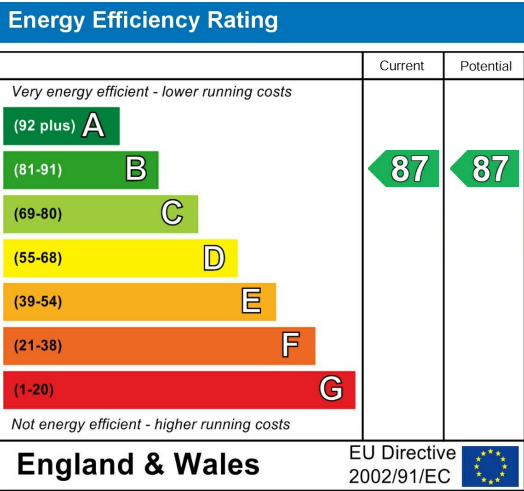
Floorplan



Area Map



Energy Efficiency Graph



These particulars, whilst believed to be accurate are set out as a general outline only for guidance and do not constitute any part of an offer or contract. Intending purchasers should not rely on them as statements of representation of fact, but must satisfy themselves by inspection or otherwise as to their accuracy. No person in this firms employment has the authority to make or give any representation or warranty in respect of the property.

Unit B 20 Western Gateway, Royal Victoria
Dock, London, E16 1BS
Tel: 020 3946 6000 Email:
docklands@madisonbrook.com
<https://madisonbrook.com/>