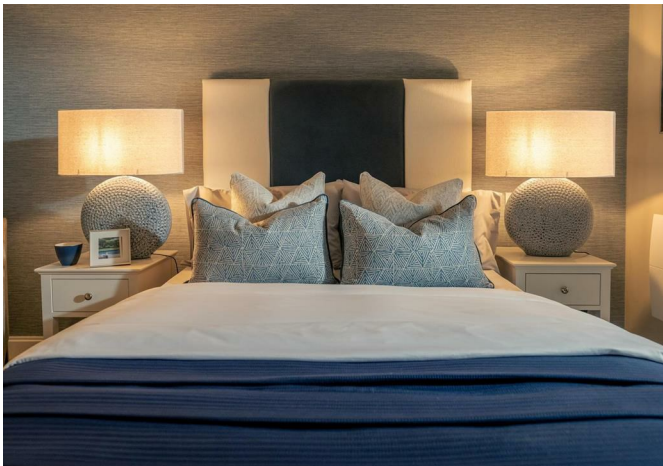




523433 Eastry Place, New Dover Road, Canterbury, CT1 3AT  
£137,500



523433 Eastry Place, New Dover Road, Canterbury, CT1 3AT

**£137,500**

Retirement properties for sale, rent and Shared Ownership in Canterbury, Kent.

Apartments designed with you in mind.

All these retirement homes are cleverly designed with smart yet stylish features, like easy turn taps, to make life easier now and in the future. Low maintenance, warm and elegant, with the latest security and safety features built in, most of our homeowners enjoy cheaper bills. Parking is available and well-behaved pets are welcome!

Lease & Service Charge

Lease length: 999 years from January 2023

Service charge: £11,420.04 per annum (financial year ending 28/02/2027)

What your service charge covers:

Dedicated Estate Manager overseeing the development

**Description**



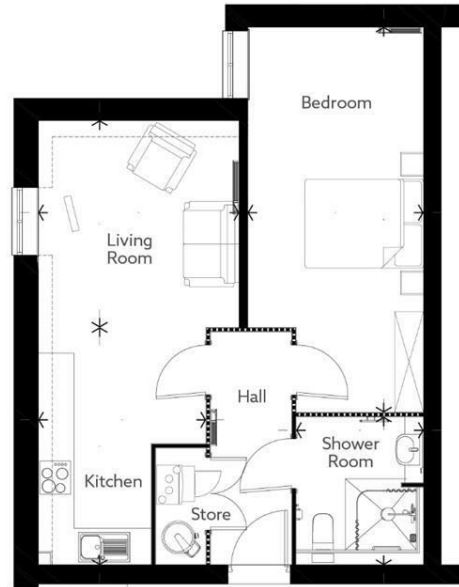
**Situation**



null  
Council Tax Band:  
Available:

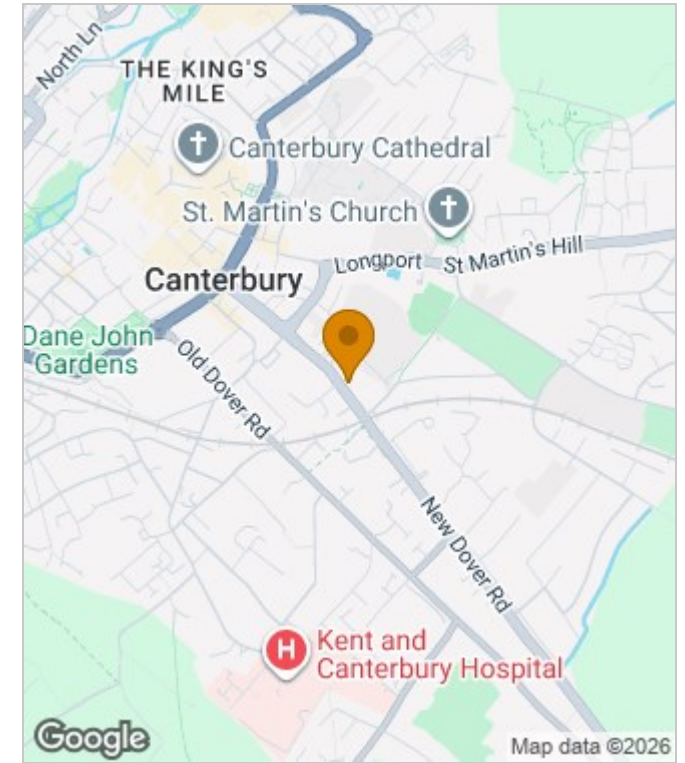
## Floor Plans

40  
53.39 SQM  
574.67 SQFT

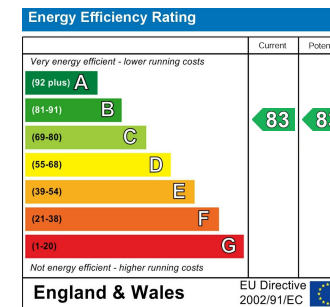


Living (Max)	11' 5" x 11' 1"	3490mm x 3389mm
Kitchen (Max)	9' 3" x 13' 2"	2828mm x 4005mm
Shower Room (Max)	7' 1" x 8' 2"	2147mm x 2497mm
Bedroom (Max)	21' 4" x 9' 9"	6496mm x 2966mm

## Area Map



## Energy Performance Graph



These particulars, whilst believed to be accurate are set out as a general outline only for guidance and do not constitute any part of an offer or contract. Intending purchasers should not rely on them as statements of representation of fact, but must satisfy themselves by inspection or otherwise as to their accuracy. No person in this firm's employment has the authority to make or give any representation or warranty in respect of the property.