

# Pursers Cross

£1,895,000

BRIK



# Pursers Cross Road

£1,895,000

Freehold

4 BED

House - Terraced

0000

SQ FT

0000

SQ M

This delightful family home is arranged over three floors and offers over 1600 sq ft of living space. The ground floor comprises a double reception with wood flooring and a bay window which floods the room with natural light, a separate W.C and an extended kitchen/breakfast room at the rear with an island, integrated appliances and ample space for dining. Bi fold doors open onto a south facing garden with access to Beaconsfield Passage. There is also a useful underfloor store room. On the first floor there are three double bedrooms and a separate shower room. The top floor has been extended to create an impressive principal bedroom with built-in storage and a separate modern bathroom.

- 4 bedrooms
- 2 bathrooms
- Double reception room
- Extended kitchen/breakfast room
- South facing garden
- Excellent location
- Ground floor WC
- Chain free
- 1607 sqft (149 sqm) including eaves and under floor storage
- EPC : C rating

Pursers Cross Road is located in a prime position within a small group of popular residential streets that run south off Fulham Road and is without doubt one of the most sought after areas in Fulham. You can find a plethora of local amenities and restaurants on Fulham Road itself, and Parsons Green is a short stroll away where you can find more restaurants, independent cafés, and boutique shops, including a little Waitrose supermarket. The closest underground station is Parsons Green (District Line, Zone 2), which is a short distance away. You can also catch regular buses from Fulham Road and New Kings Road towards Fulham Broadway, Chelsea and central London.

**MATHEW GOSS**

020 7384 6790

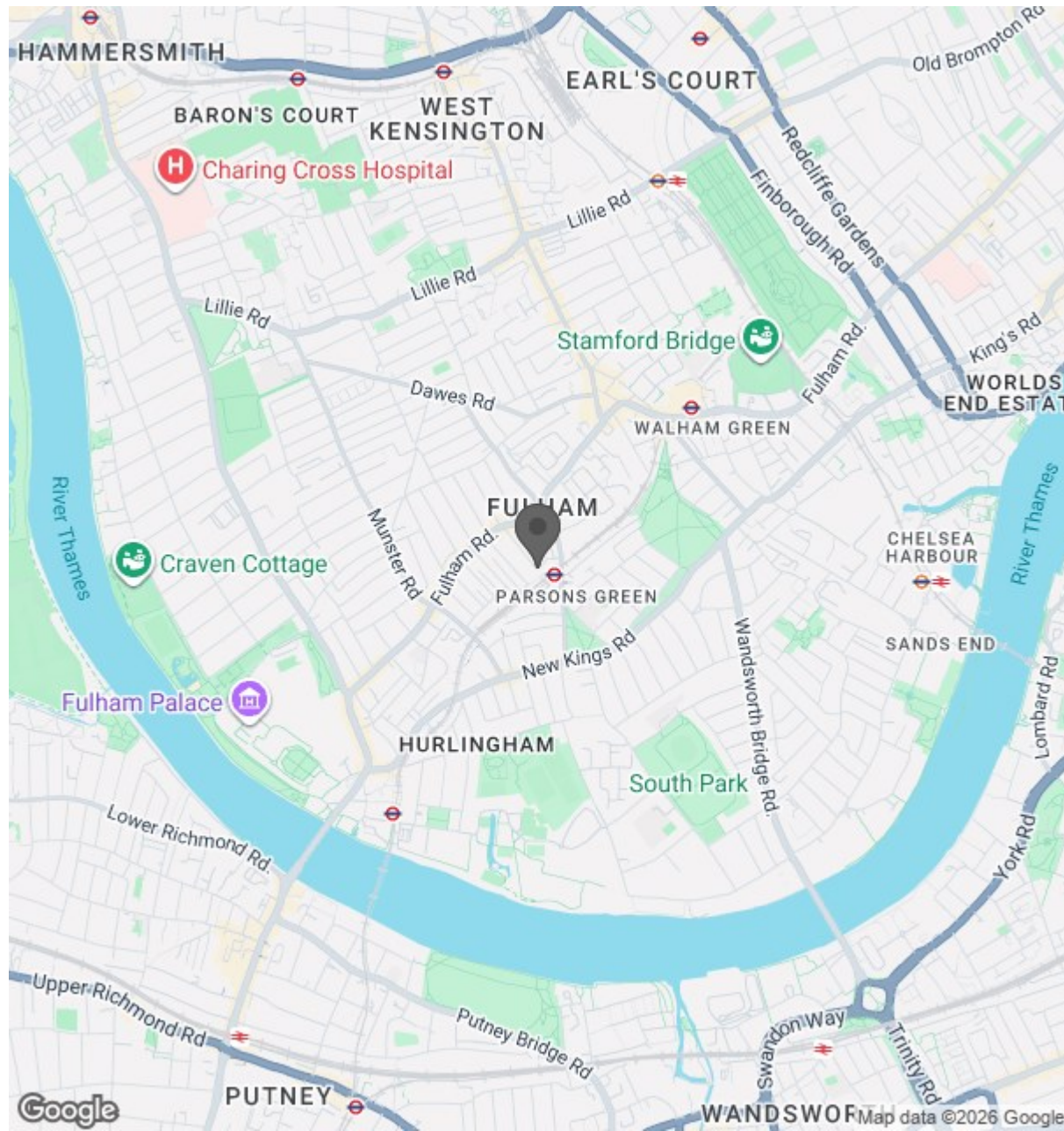
mathew@brik.co.uk







# Location



BRIK

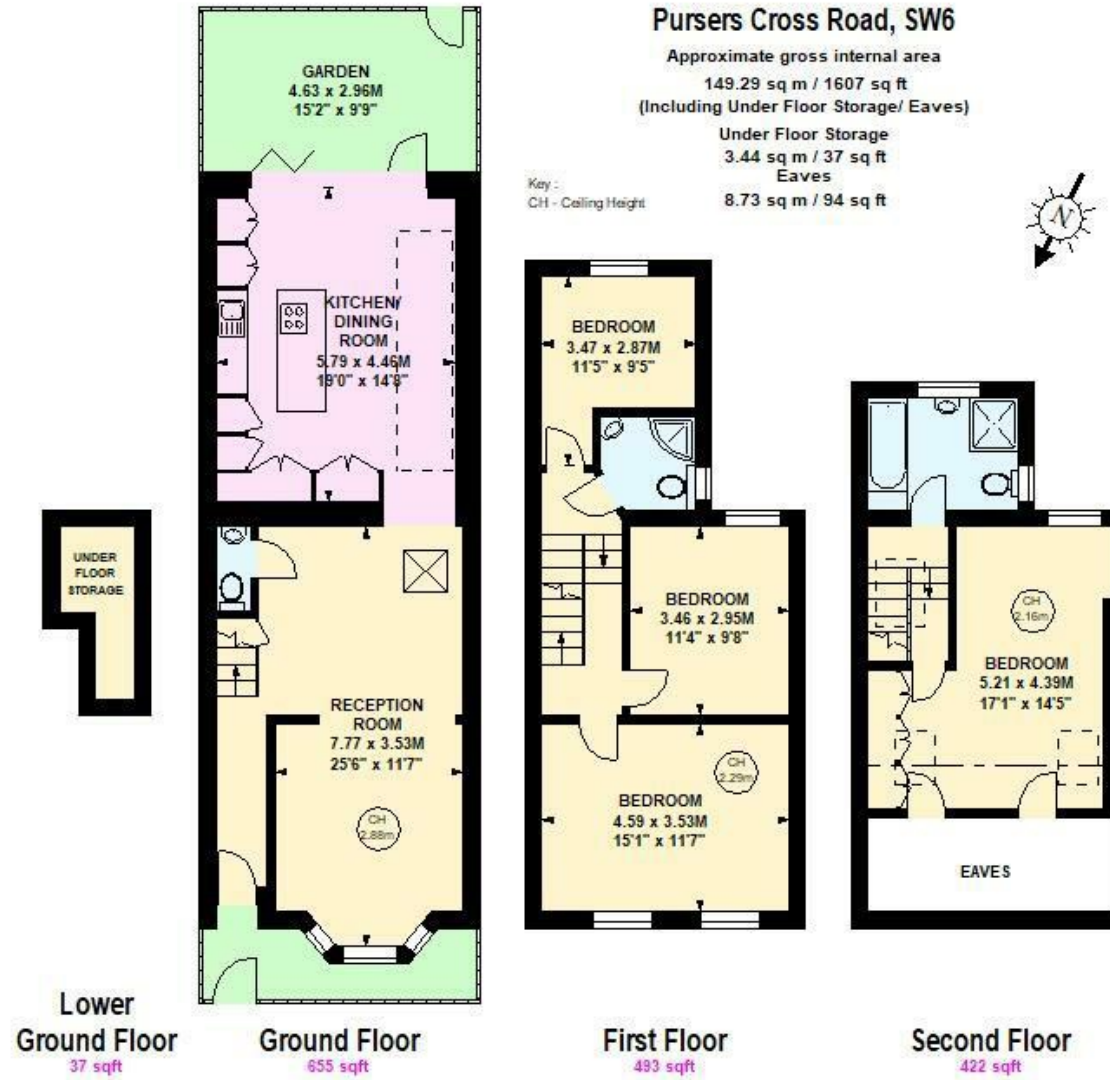
0000  
SQ FT

0000  
SQ M

### Pursers Cross Road, SW6

Approximate gross internal area  
149.29 sq m / 1607 sq ft  
(Including Under Floor Storage/ Eaves)  
Under Floor Storage  
3.44 sq m / 37 sq ft  
Eaves  
8.73 sq m / 94 sq ft

Key :  
CH - Ceiling Height



Although every attempt has been made to ensure accuracy, all measurements are approximate.  
This floorplan is for illustrative purposes only and not to scale.  
Measured in accordance with RICS standards.

Important notice Brik give notice that: all text, photographs and plans on these brochure are for guidance only and are not necessarily comprehensive; any areas, measurements or distances given are approximate; these details do not constitute part of an offer or contract and must not be relied upon as statements or representations of fact; it should not be assumed that the property has all the necessary planning permissions and building regulations approvals; we are not authorised to give any representations or warranties in relation to this property whatsoever; potential purchasers must satisfy themselves as to the correctness of all details by inspection or otherwise. Brik, 77 Parsons Green Lane, Fulham, London SW6 4JA Tel: 020 7384 6790 Email: hello@brik.co.uk