



Barlow Drive, SE18

£595,000

A well-presented three bedroom end of terrace townhouse, offering generous living space arranged over three floors, with the added benefits of off-street parking, a garage, and a private garden.

The ground floor comprises a modern kitchen/diner to the rear, overlooking and providing access to the private garden, creating an ideal space for both everyday living and entertaining. A convenient guest WC completes this level. On the first floor, there is a bright and spacious reception room along with a well-proportioned double bedroom and a contemporary family bathroom. The top floor features two further double bedrooms, both benefiting from built-in storage and their own en suite

Features

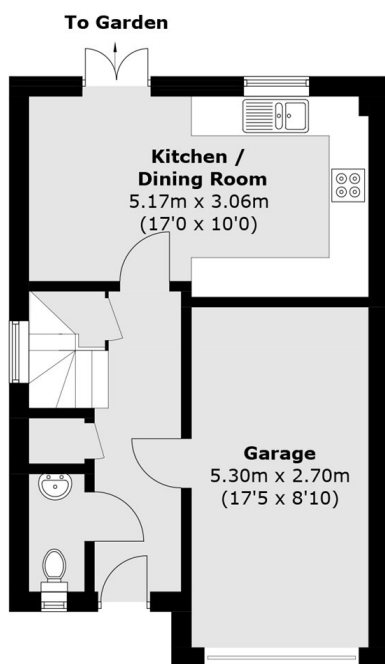
- Three Double Bedrooms
- End Of Terrace House
- Three Bathrooms
- Chain Free
- Garage
- Cul-De-Sac Road



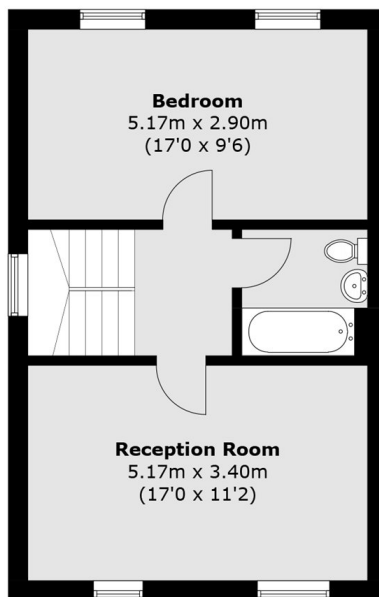
Barlow Drive, SE18



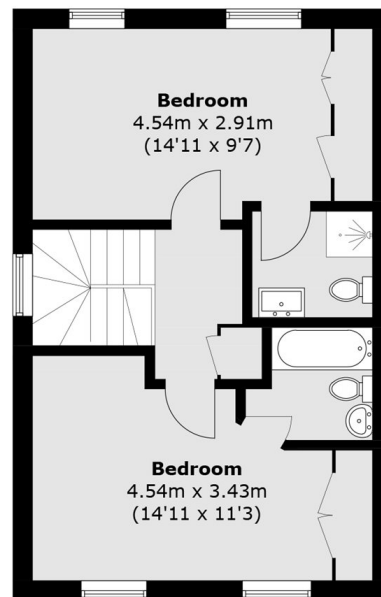
Barlow Drive, London, SE18



Ground Floor



First Floor



Second Floor

Total area (approx.): 128.4 sq. m (1381 sq. ft)
Including Garage