



**POOLE
TOWNSEND**

Birch Close, Barrow-In-Furness, LA13 0RQ

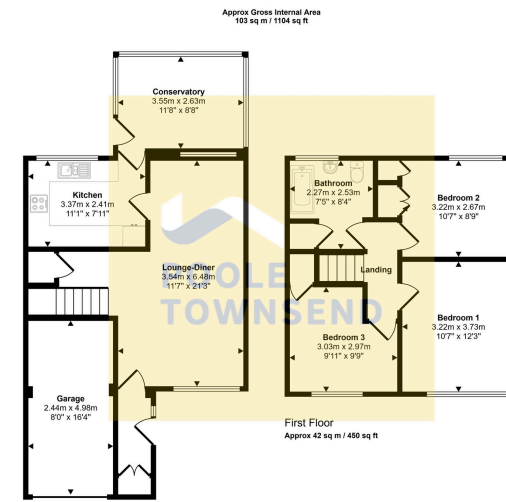
£249,950

3 1 1



- Located In A Quiet Cul-De-Sac
- Three Bedrooms
- Larger Than Average Bathroom
- Rear Conservatory Extension
- Driveway
- Popular Holbeck Area
- Detached Home
- Spacious Open Plan Lounge-Diner
- Integral Garage
- Front And Rear Gardens

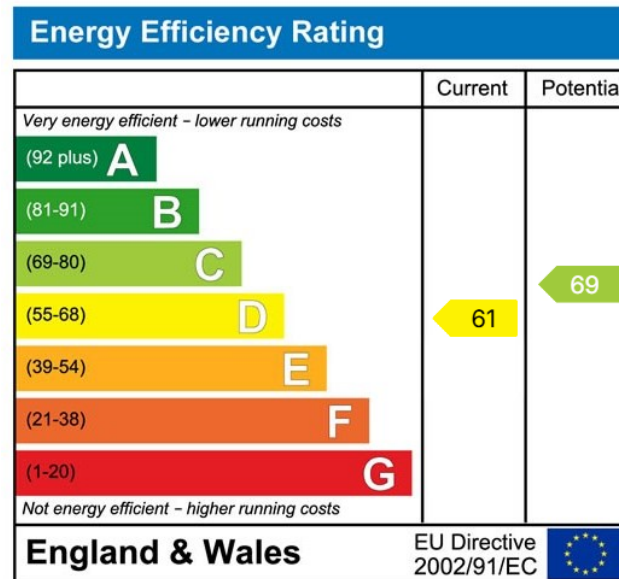




Ground Floor
Approx 42 sq m / 450 sq ft

This floorplan is only for illustrative purposes and is not to scale. Measurements of rooms, doors, windows, and any items are approximate and no responsibility is taken for any error, omission or mis-statement. Icons of items such as bathroom suites are representative only and may not look like the real items. Made with Maple Snippy 360.

Located in a slightly elevated position within a peaceful cul-de-sac in the popular Holbeck area of Barrow-in-Furness, this well-presented three-bedroom detached home offers a spacious open plan lounge-diner, a fitted kitchen with integrated appliances, and a bright rear conservatory extension. With three good-sized bedrooms, a larger-than-average bathroom, integral garage and driveway parking, plus attractive front and rear gardens featuring a patio and pond, this property provides comfortable family living in a highly sought-after residential setting.



Visit us at
www.pooletownsend.co.uk
enquiries@pooletownsend.co.uk

We are open
 Monday – Friday 9.00 – 5.00
 Saturday 9.00 – 1.00

Barrow 01229 811811
 Ulverston 01229 588111
 Grange 015395 33316
 Kendal 01539 734455
 Milnthorpe 015395 62044