



WOODFIELD ROAD, W9

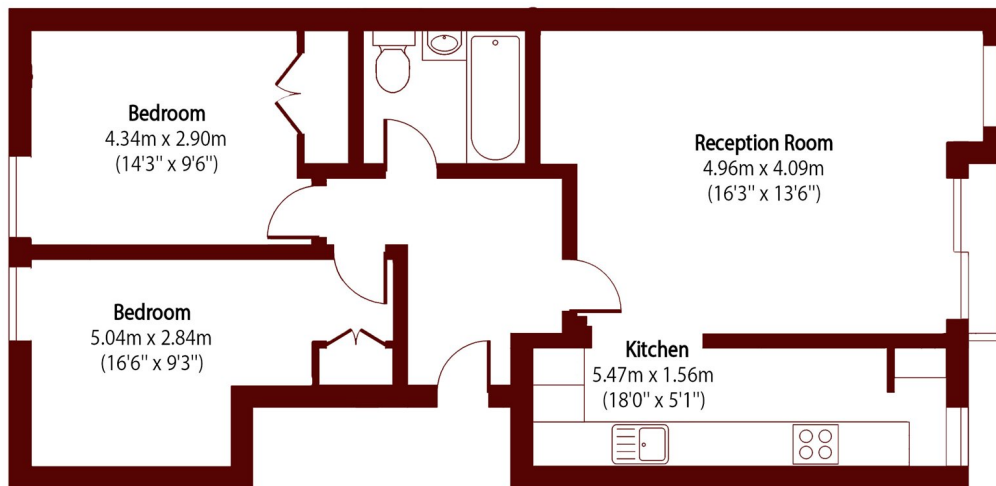
£575,000

A beautifully refurbished two bedroom apartment set on the first floor and finished to a high standard throughout.

Two bedrooms
First floor
Excellent condition

Approx. 747sq ft
Allocated parking
Chain free

STEP INSIDE WOODFIELD ROAD



Total area (approx): 69.40 sq m (747 sq. ft)

Little Venice
020 7993 3050

Energy Rating: B We aim to make our particulars both accurate and reliable. However, they are not guaranteed; nor do they form part of an offer or contract. If you require clarification on any points then please contact us, especially if you're traveling some distance to view. Please note that appliances and heating systems have not been tested and therefore no warranties can be given as to their good working order

**MARSH &
PARSONS**