



**Gentlemen Row, Enfield, EN2 6PU**

**welcome to**

## **Gentlemen's Row, Enfield**

Barnfields are extremely delighted to offer for sale this rarely available Victorian terraced house within the heart of Enfield Town's Conservation area. Perfect for downsizers, the property is located in the picturesque Gentleman's Row within a few minutes walk of Enfield Chase Overground Station, Enfield Town Park, the shops in Enfield Town and the old course of the New River.

This elegant property is full of charm and character and early viewing is highly advised to avoid disappointment!



## Entrance Hall

Original front door opens to the hallway with tiled floor, inner door opens to:-

## Through Lounge

24' 10" x 13' 11" ( 7.57m x 4.24m )

Wood flooring, bay of sash windows to front with fitted shutters, two open fireplace recesses with marble hearths, two column radiators, rear sash window with fitted shutters, doorway to:-

## Kitchen

12' 4" x 8' ( 3.76m x 2.44m )

Contemporary style kitchen with stainless steel floor units, worktops and upstands, sink and drainer, space for a large Aga style oven, plumbing for a washing machine, windows to side and rear with fitted shutters and views over the garden, contrasting tiled flooring, double glazed door to side.

## First Floor

### Landing

Fitted carpet, loft hatch opening to boarded loft space.

### Bedroom One

13' 11" x 11' 3" ( 4.24m x 3.43m )

Fitted carpet, two windows to front with fitted shutters, column radiator.

### Bedroom Two

11' 6" x 8' 7" ( 3.51m x 2.62m )

Fitted carpet, column radiator, window to rear with fitted shutters.

## Bathroom

A beautifully installed bathroom with matching "his and her's" hand basins, freestanding bath, step-in shower unit, low flush WC column radiator, attractive tiled walls, wood flooring, window to rear with fitted shutters, two matching storage cupboards.

## Outside

### Rear Garden

A generous and pretty Westerly facing rear garden with brick paved patio to front, mature tree and shrub borders, central lawn leading to the rear with views overlooking the New River and garden shed.



**view this property online** [barnfields.co.uk/Property/ENF105658](https://barnfields.co.uk/Property/ENF105658)







welcome to

## Gentlemen's Row, Enfield

- Two Bedroom Victorian House
- Through Lounge
- Contemporary Kitchen
- Modern First Floor Bathroom
- West Facing Garden Backing Onto The New River

Tenure: Freehold EPC Rating: E  
Council Tax Band: E

Offers In Excess Of  
**£725,000**

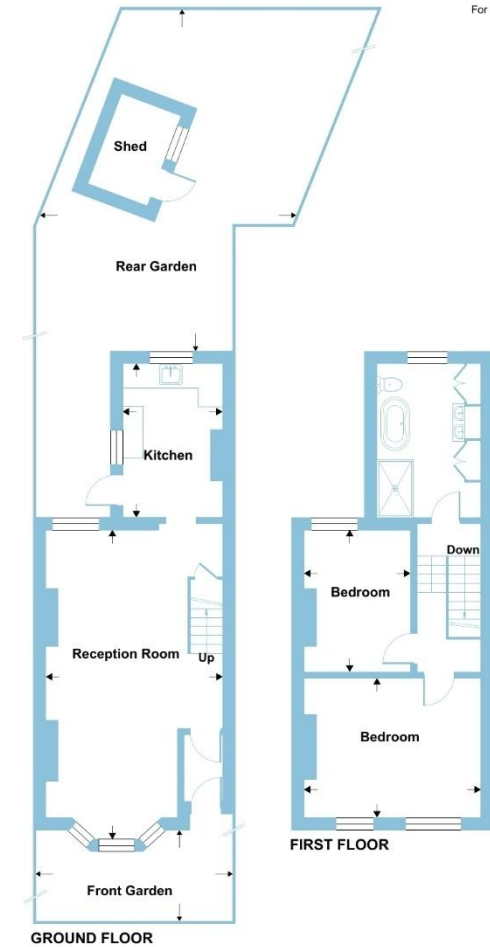


Please note the marker reflects the postcode not the actual property



## Gentlemen's Row, Enfield, EN2

Approximate Area = 881 sq ft / 81.8 sq m  
Outbuilding = 40 sq ft / 3.7 sq m  
Total = 921 sq ft / 85.5 sq m  
For identification only - Not to scale



Floor plan produced in accordance with RICS Property Measurement 2nd Edition, Incorporating International Property Measurement Standards (IPMS2 Residential). © nichcom 2026. Produced for Barnard Marcus. REF: 1414532



check out more properties at [barnfields.co.uk](https://www.barnfields.co.uk)



Property Ref:  
ENF105658 - 0003

1. MONEY LAUNDERING REGULATIONS Intending purchasers will be asked to produce identification documentation at a later stage and we would ask for your co-operation in order that there is no delay in agreeing the sale. 2. These particulars do not constitute part or all of an offer or contract. 3. The measurements indicated are supplied for guidance only and as such must be considered incorrect. Potential buyers are advised to recheck measurements before committing to any expense. 4. We have not tested any apparatus, equipment, fixtures or services and it is in the buyers interest to check the working condition of any appliances. 5. Where an EPC, or a Home Report (Scotland only) is held for this property, it is available for inspection at the branch by appointment. If you require a printed version of a Home Report, you will need to pay a reasonable production charge reflecting printing and other costs. 6. We are not able to offer an opinion either written or verbal on the content of these reports and this must be obtained from your legal representative. 7. Whilst we take care in preparing these reports, a buyer should ensure that his/her legal representative confirms as soon as possible all matters relating to title including the extent and boundaries of the property and other important matters before exchange of contracts.

Barnfields is a trading name of Sequence (UK) Limited which is registered in England and Wales under company number 4268443, Registered Office is Cumbria House, 16-20 Hockliffe Street, Leighton Buzzard, Bedfordshire, LU7 1GN. VAT Registration Number is 500 2481 05.



**020 8363 3394**



[info@barnfields.com](mailto:info@barnfields.com)



1a Windmill Hill, Enfield, Middlesex, EN2 6SE



[barnfields.co.uk](https://www.barnfields.co.uk)