



Station Road, Harlow, CM17

BUTLER & STAG



A rare opportunity to secure one of eight newly built apartments in the heart of Old Harlow, ideally located on Station Road. Finished to a high specification throughout, these homes have been carefully designed to offer both style and practicality.



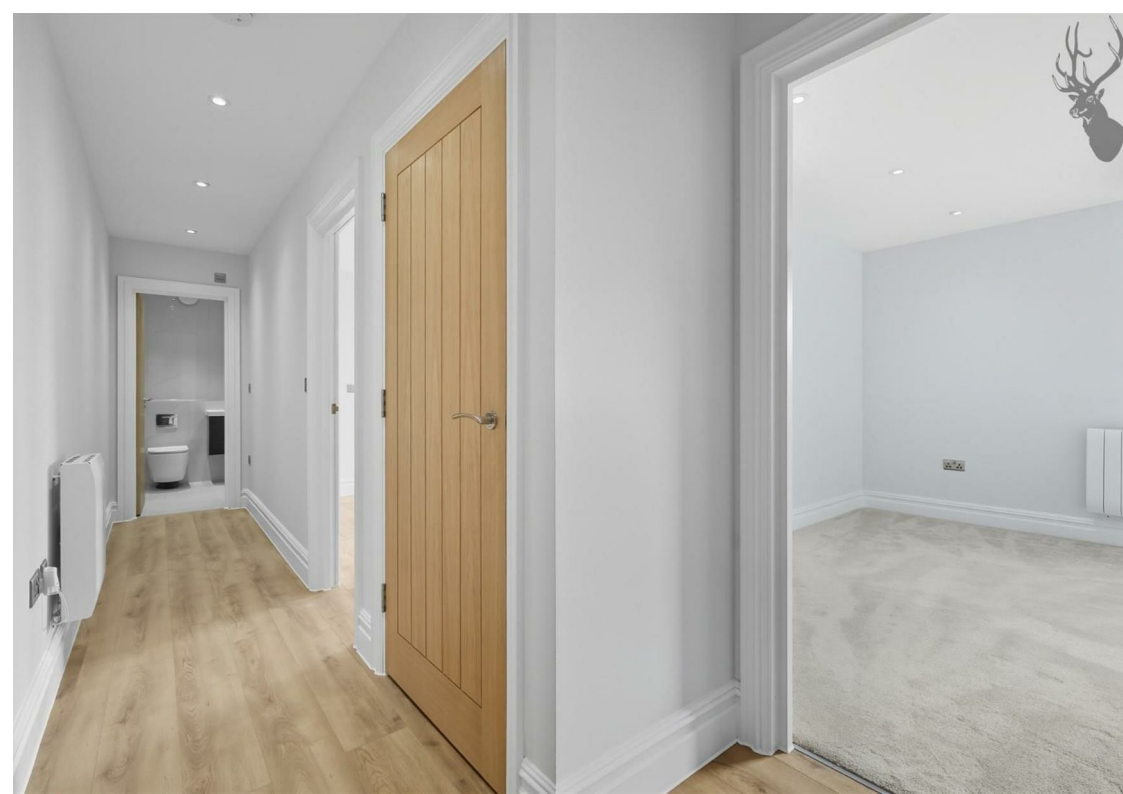
- One Of Just Eight Brand New Apartments
- High Specification Throughout
- Balcony
- Allocated Parking
- Walking Distance To All Local Amenities
- Available December

A collection of eight beautifully crafted, brand new apartments are now available on Station Road in the heart of Old Harlow. Designed with modern living in mind, these homes offer a striking sense of space thanks to their tall ceilings, creating bright and airy interiors throughout. Finished to a high specification, each apartment combines contemporary style with everyday practicality, featuring sleek fitted kitchens, elegant bathrooms and thoughtfully planned layouts.

Residents will also benefit from allocated parking, adding convenience to the development's desirable location. Positioned within easy walking distance of Old Harlow's array of shops, cafés, restaurants and everyday amenities, the apartments provide an ideal balance of village charm and modern accessibility. For those needing to commute, Harlow Mill station is close by, offering excellent links into London and beyond.

Council Tax Band - Not Available yet

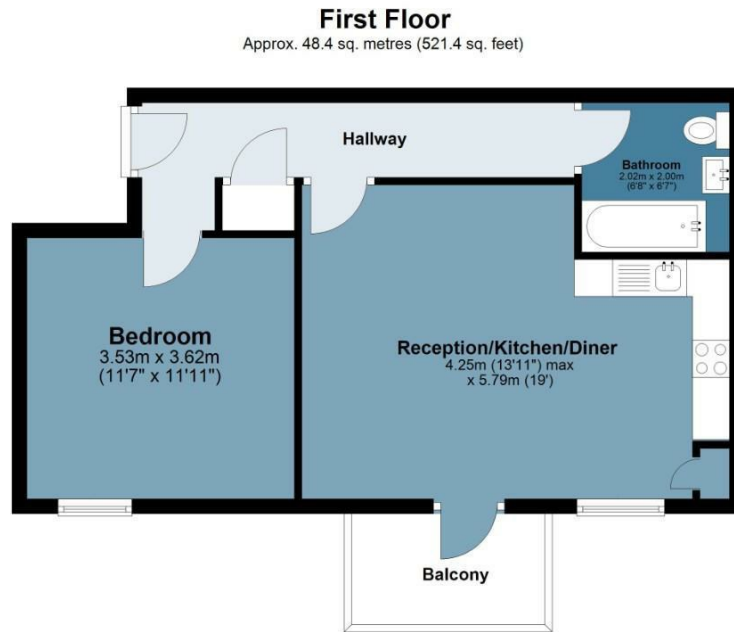




Old Harlow Apartments

Approx. Gross Internal Area 48.4 Sq M (521.4 Sq Ft)

BUTLER & STAG



Measurements are approximate and for illustration purposes only. While we do not doubt the accuracy and completeness, we advise you conduct a careful independent assessment of the property to determine monetary value.
© @modephotouk www.modephoto.co.uk

BUTLER & STAG

☎ 01992 667666

🏠 4 Forest Drive, Theydon Bois, Essex, CM16 7EY

✉ theydon@butlerandstag.com

www.butlerandstag.uk

IMPORTANT NOTICE - These particulars have been prepared in good faith and they are not intended to constitute part of an offer or contract. We have not performed a structural survey on this property and the services, appliances and specific fittings have not been tested. All photographs, measurements, floor plans and distances referred to are given as a guide and should not be relied upon.