



## 4 University Fields, Evesham

Offers Over **£300,000**







## 4 University Fields

Evesham, Evesham

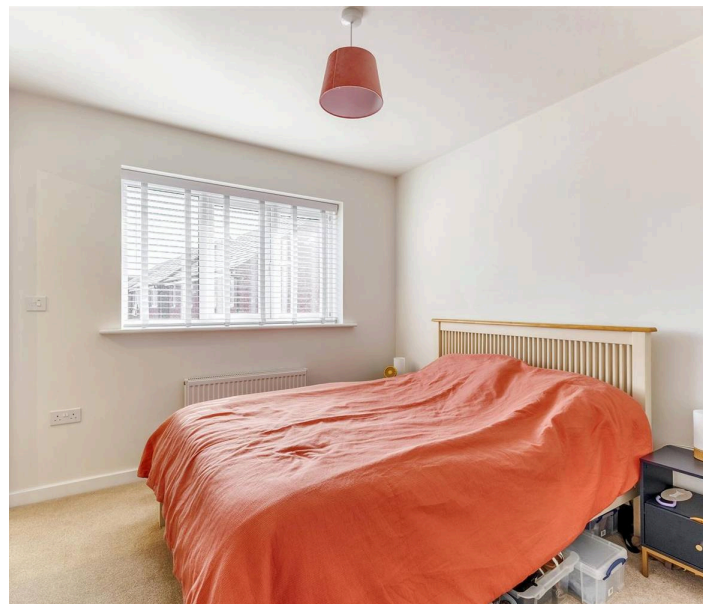
Council Tax band: C

Tenure: Freehold

EPC Energy Efficiency Rating: B

EPC Environmental Impact Rating: B

- MODERN THREE-BEDROOM SEMI-DETACHED HOUSE
- LOCATED ON THE POPULAR EVESHAM GATE DEVELOPMENT
- SPACIOUS LOUNGE & KITCHEN/BREAKFAST ROOM
- PRINCIPAL BEDROOM WITH EN-SUITE
- SOLAR PANELS & EV CHARGER CONNECTION
- DRIVEWAY PARKING TO THE SIDE
- LAWNED GARDEN WITH PATIO AREA & REAR ACCESS



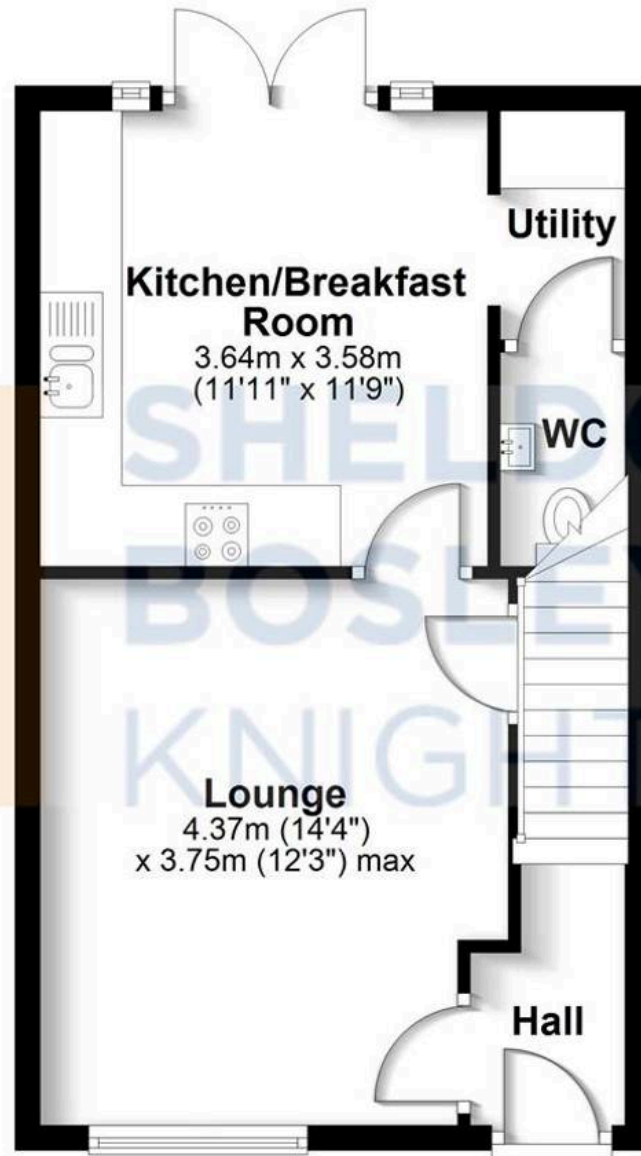






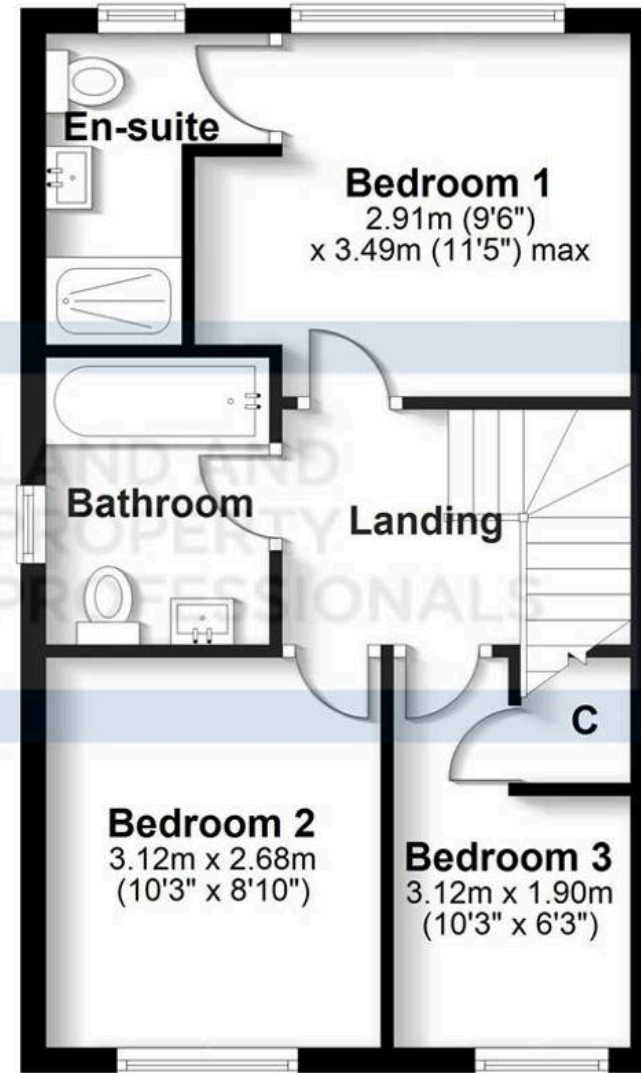
## Ground Floor

Approx. 37.9 sq. metres (408.4 sq. feet)



## First Floor

Approx. 37.9 sq. metres (408.4 sq. feet)



Total area: approx. 75.9 sq. metres (816.8 sq. feet)

All efforts have been made to ensure the measurements are accurate on this floor plan, however these are for guidance purposes only.

Plan produced using PlanUp.