



**Medfield Street, SW15**

**£1,200,000**

**Dexters**



## Medfield Street, SW15

Set on a quiet residential street in the heart of Roehampton, this attractive contemporary mews house on Medfield Street offers spacious and versatile accommodation arranged over four floors.

The ground floor is centred around a bright, open-plan kitchen and dining room, with sleek fitted units and ample space for entertaining. Large glazed doors open directly onto a private courtyard garden, creating a seamless indoor-outdoor flow. The lower ground floor provides a generous reception room, ideal as a main living space or media room, alongside an additional bedroom and bathroom, perfect for guests or flexible use.

Upstairs, the property offers three well-proportioned bedrooms, including a particularly spacious principal room, all complemented by modern bathrooms and useful storage throughout. The layout is well suited to both family living and those needing work from home space.

Medfield Street is ideally located for the amenities of Putney High Street, with its wide selection of shops, cafés and restaurants. The open green spaces of Putney Heath Wimbledon Common and Richmond Park are all nearby. Transport links are excellent, with Putney Station providing direct services to Waterloo, and East Putney Station offering easy access across London, alongside numerous bus routes.

### Features

1,479 sq. ft

Four Bedrooms

Three Bathrooms

Private Garden

Freehold

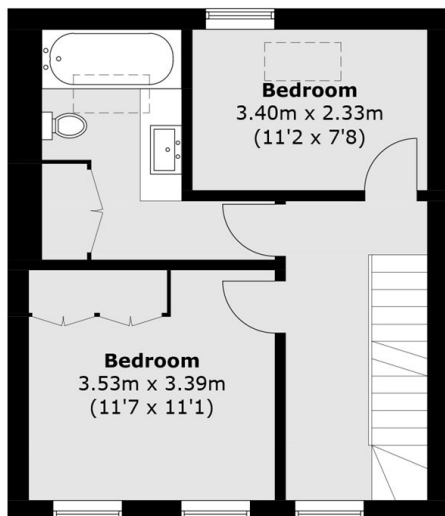
Chain Free



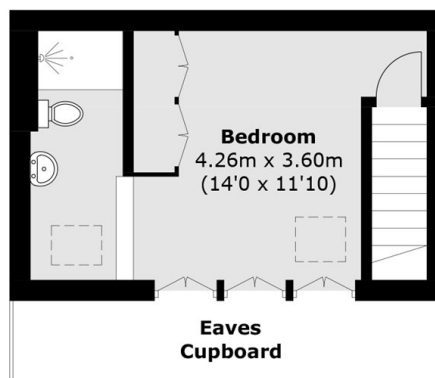




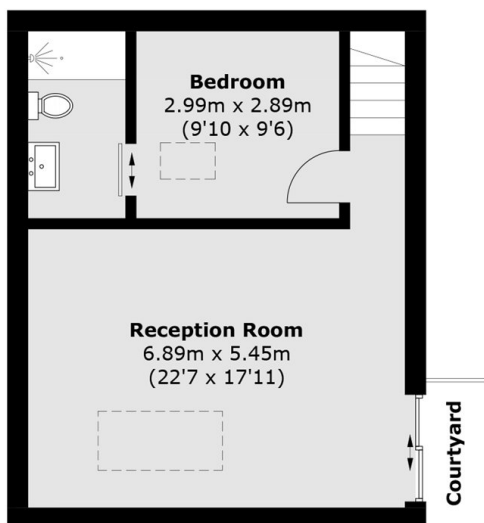
# Medfield Street, London, SW15



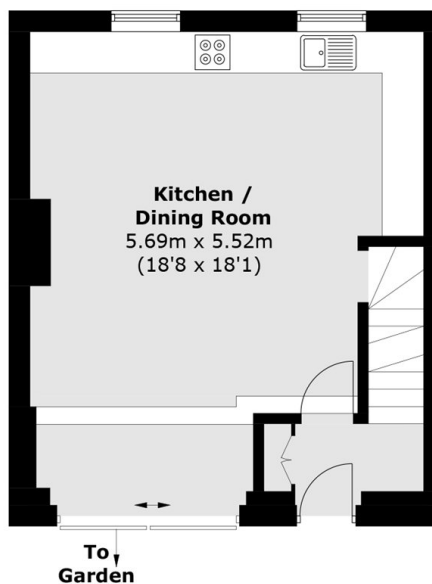
**First Floor**



**Second Floor**



**Lower Ground Floor**



**Ground Floor**

Total area (approx.): 137.5 sq. m (1,479.9 sq. ft)  
(Excluding Eaves Cupboard)