



Regency Lettings &
Property Management



18 Willow Walk, Petworth, GU28 0EY

3 bedroom fully refurbished house

£1,600 pcm



Willow Walk - We are delighted to offer this beautifully presented, fully refurbished three-bedroom house, ideally located just a few minutes from Petworth town centre.

Ground Floor

The welcoming hallway opens into a stunning open-plan living space with oak laminate flooring.

The newly installed shaker-style kitchen has a breakfast bar and includes a built-in oven, hob, dishwasher, fridge freezer, and washer-dryer.

A newly fitted downstairs cloakroom completes the ground floor.

First Floor

Two double bedrooms with built-in wardrobes, newly carpeted.

One generously sized single bedroom, newly carpeted.

A fabulous newly installed bathroom with a rain head shower over the bath.

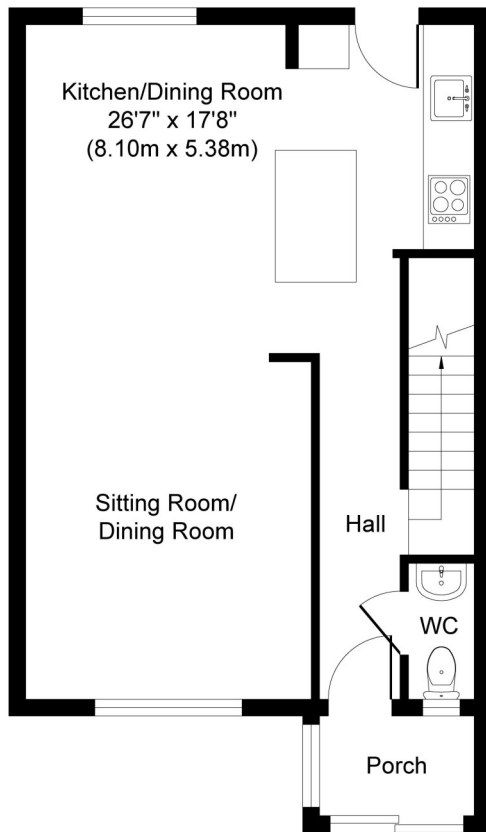
A landing storage cupboard and a separate airing cupboard with a newly installed water cylinder.



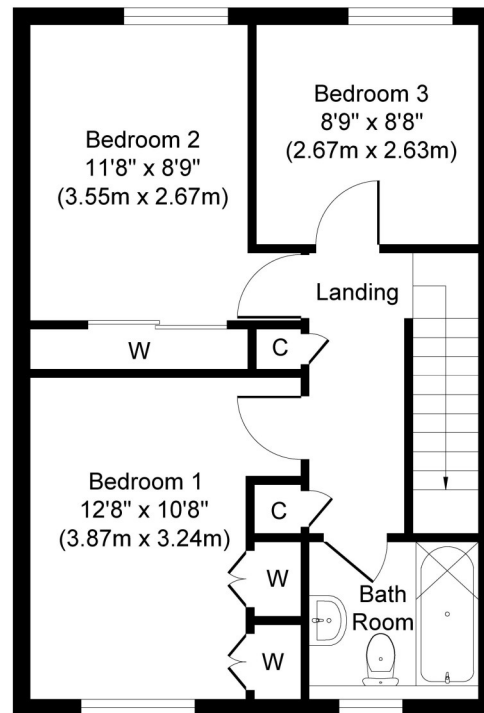








Ground Floor
Approximate Floor Area
498 sq. ft
(46.22 sq. m)



First Floor
Approximate Floor Area
470 sq. ft
(43.63 sq. m)

has been made to ensure the accuracy of the floor plan contained here, measurements of doors, windows, rooms and any other items are approximate and no responsibility is taken for any errors. The measurements should not be relied upon for valuation, transaction and/or funding purposes. This plan is for illustrative purposes only and should be used as such by any prospective purchaser. The services, systems and appliances shown have not been tested and no guarantee as to their operability or efficiency can be given.
 Copyright V360 Ltd 2026 | www.houseviz.com

Property Information

House: 968 sq ft

Local authority: Chichester Borough Council

Council tax band: C 2026/27 £2,208.08

EPC rating: TBC

Drainage: Mains

Heating: Air Source Heat Pump via radiators

Enquiries and viewings contact:

Regency Lettings & Property Management

lettings@rlpm.co.uk 01428 684540

Petworth town centre is just over half a mile away, approximately a 13-minute walk, and the town car park offers up to one hour of complimentary parking.

Petworth is an exceptionally attractive historic market town, perhaps best known for the National Trust-owned Petworth House and its magnificent 750-acre parkland. The town enjoys a regular farmers' market, an excellent deli, and a range of independent shops catering to everyday needs, as well as annual music and literary festivals and a vibrant selection of local societies. Nearby leisure pursuits include golf at Cowdray Park and horse and motor racing at Goodwood. For more extensive shopping, major supermarkets, and the renowned Festival Theatre, Chichester lies around 16 miles away. London is also readily accessible, with mainline stations at Haslemere (11 miles, approximately 60 minutes to Waterloo) and Pulborough (6 miles, approximately 70 minutes to Victoria), while the A3 is within a 15-mile drive.



Enquiries and viewings contact: Regency Lettings & Property Management lettings@rlpm.co.uk 01428 684540