



West Grove, SE10

£1,000,000

This outstanding apartment spans over 1,700 sq ft. Beautifully presented throughout, it offers a separate reception room, an impressive kitchen/dining room, two generous double bedrooms, two bathrooms, and a beautifully landscaped communal garden. Ideally situated on West Grove, a historic lane in the very heart of Greenwich.

Located within a short walk from the open expanses of Greenwich Park and Blackheath and a short walk from the centre of Greenwich. This unique old town, famous for its maritime history, has an excellent selection of restaurants, pubs and shops, as well as a Greenwich Picturehouse cinema and a theatre. The Old Royal Naval College, designed by Sir Christopher Wren in the 18th century, hosts a popular programme of events in the gardens, including concerts, an open-air theatre and a jazz festival.

Features

- Chain Free
- Two Double Bedrooms
- 37ft Lounge
- Immaculate Throughout
- Period Features Throughout
- Sought After Location
- Wonderful Communal Gardens
- Dual Aspect View



West Grove, SE10

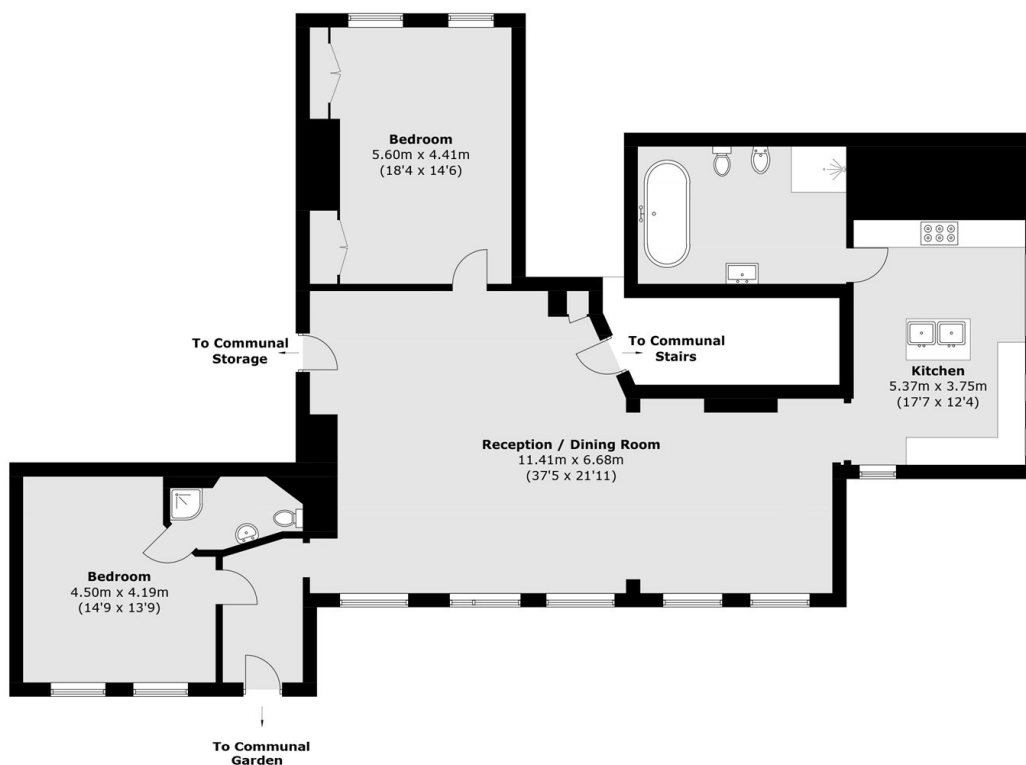
As you enter the property you are welcomed by a grand entrance hall with access into the main principal room. The dual aspect drawing room has original fireplaces, ornate plasterwork and bespoke built-in cabinetry.

On the opposite side of the entrance hall is the space that leads into the family reception room with period features and fire places throughout, Then leading onto the second double bedroom with built in bespoke wardrobes. The reception room then leads onto a large kitchen dining area which provides a great entertaining space. The main family bathrooms benefits from a bath and shower! with an exceptionally unique well!

The building has had a phenomenally rich and intricate history over the past three centuries. This began in 1701, when John Hoare (of the Hoare banking family) commissioned it as a country residence within close proximity of the City of London. There is little doubt that he would have found the vista looking across to the Docklands deeply satisfactory. It was sold circa 1750 to the Grote family, handsomely portrayed by Joshua Reynolds, who created the building as it is today. By the end of the 18th century, it was home to Commander William Larkins of the East India Trading Company, who fashioned the second floor as a private observatory, taking full advantage of the overlook.



West Grove, London, SE10



Total area (approx.): 157.8 sq. m (1,698.5 sq. ft)