



GRAY
TO YNBEE



Basement Room 1, 6 Hertford Street, Cambridge, CB4 3AG

£950 Per month



1



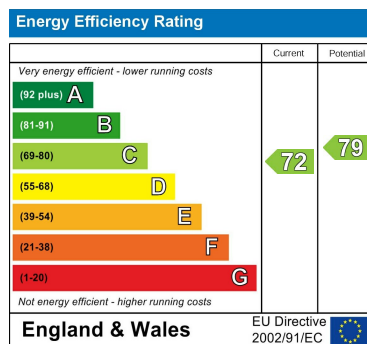
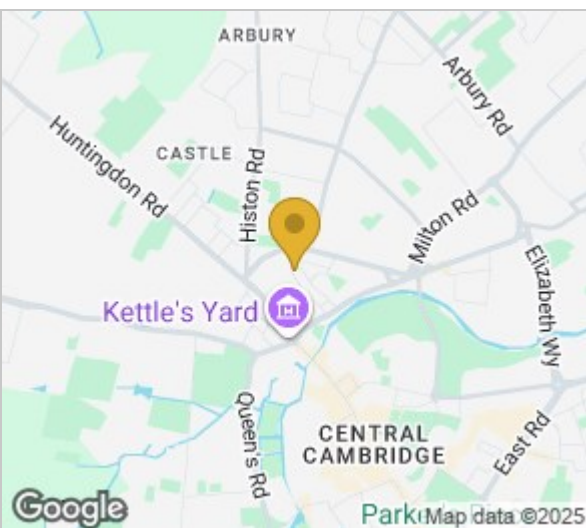
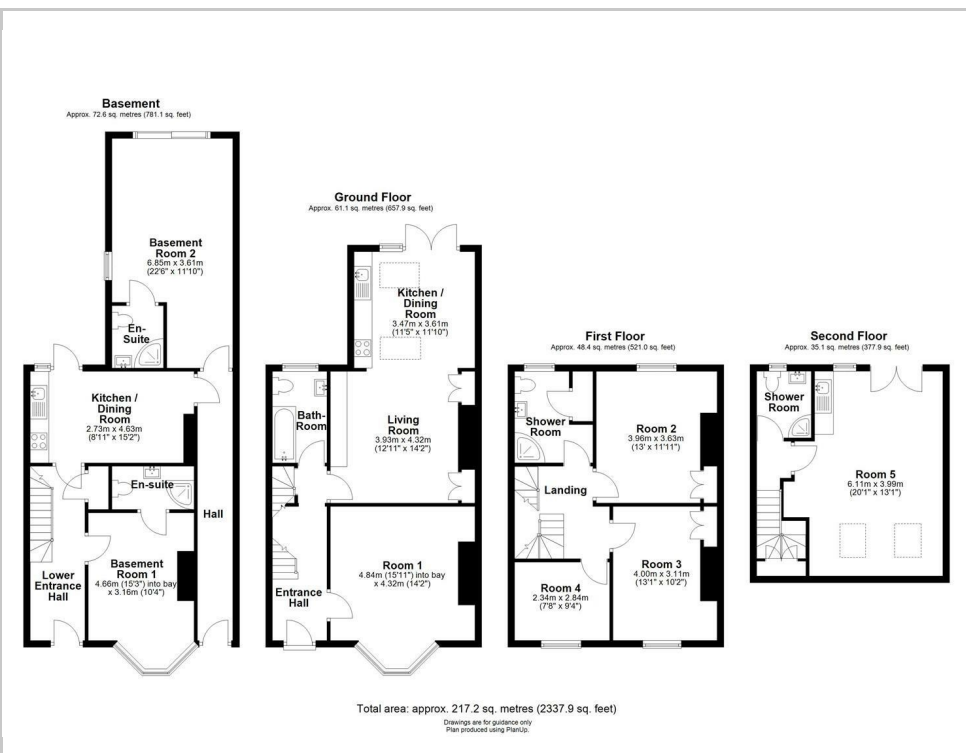
1



null



C



- Double Room
- Bills Included
- Fully Furnished
- Single Occupancy Only

A good sized double room en-suite room located on the ground floor of this shared house.

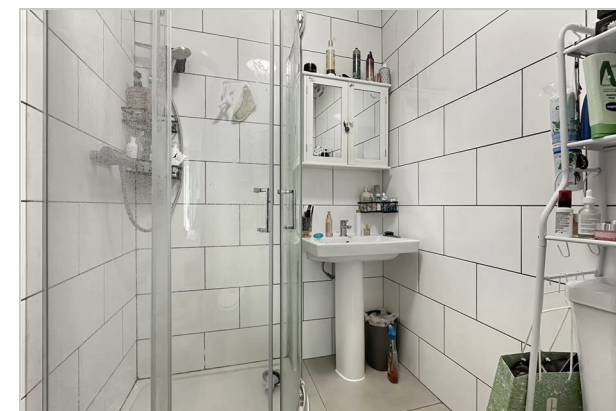
The accommodation is fully furnished and finished in a modern, neutral décor. It would be well suited to a single professional. There is a well equipped kitchen to be shared with the other room on this floor of the accommodation. Upstairs you will find another large shared kitchen and communal living space to spend time with your new housemates.

The property is approximately a 15-minute walk from Cambridge City Centre, with regular bus links from the main bus station and around 40 minutes on foot to Cambridge train station. The River Cam, Jesus Green, and the Lido are all within easy walking distance from this highly desirable street.

All utility bills are included in the rent. Tenants also have access to a shared paved garden at the rear of the property.

///token.book.vision

Council Tax: D EPC: D



These particulars, whilst believed to be accurate are set out as a general outline only for guidance and do not constitute any part of an offer or contract. Intending purchasers should not rely on them as statements of representation of fact, but must satisfy themselves by inspection or otherwise as to their accuracy. No person in this firms employment has the authority to make or give any representation or warranty in respect of the property.

Cambridge Victoria: 154-156 Victoria Road, Cambridge, CB4 3DZ
01223 439 888 theteam@grayandtoynbee.com

Cambridge South: Adkins Corner, Perne Road, Cambridge CB1 3RU
01223 439 555 theteam@grayandtoynbee.com

Waterbeach: 17 High Street, Waterbeach, CB25 9JU
01223 949 444 waterbeach@grayandtoynbee.com