



## Mount Avenue, W5

£522,500

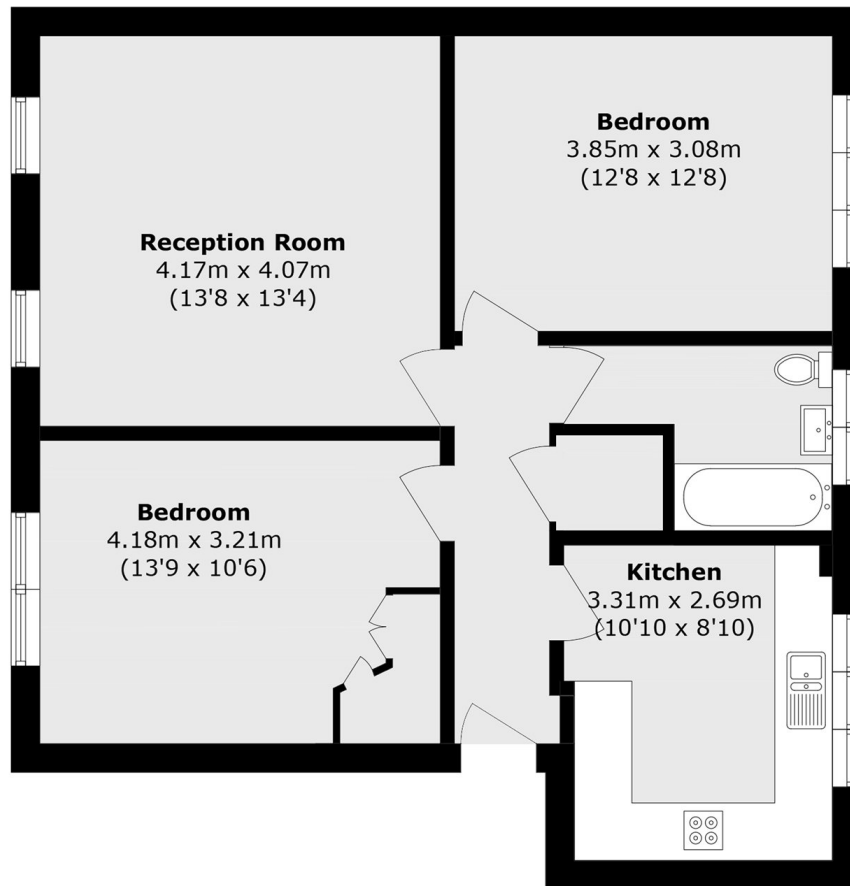
A ground floor apartment with underground parking and a share of freehold with long underlying lease in this well maintained building. This purpose built flat offers a generous living room, separate kitchen and two double bedrooms.

Mount Eaton Court is in a prime location for Ealing Broadway Station (National Rail, Crossrail, Central Line, District Line) and close to the highly regarded Montpelier Primary School.

### Features

Second Floor  
Two Double Bedrooms  
Share Of Freehold  
Long Lease 965 Years  
Underground Parking  
Great Condition

# Mount Avenue, London, W5



Total area (approx.): 64.2 sq. m (752.4 sq. ft)