



## Wedderburn Road, NW3

£4,750 Per calendar month

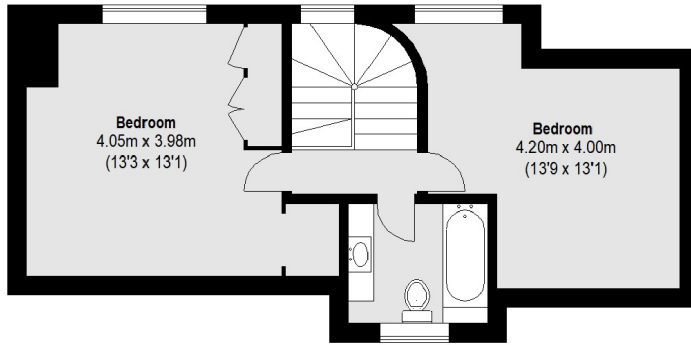
A charming four double bedroom apartment set over the second and third floor of this conversion. The property boasts a spacious reception room with direct access to a private balcony, separate kitchen and two bathrooms.

The flat is located a short walk to Belsize Park tube station giving you quick access to the City and Central London on the Northern Line.

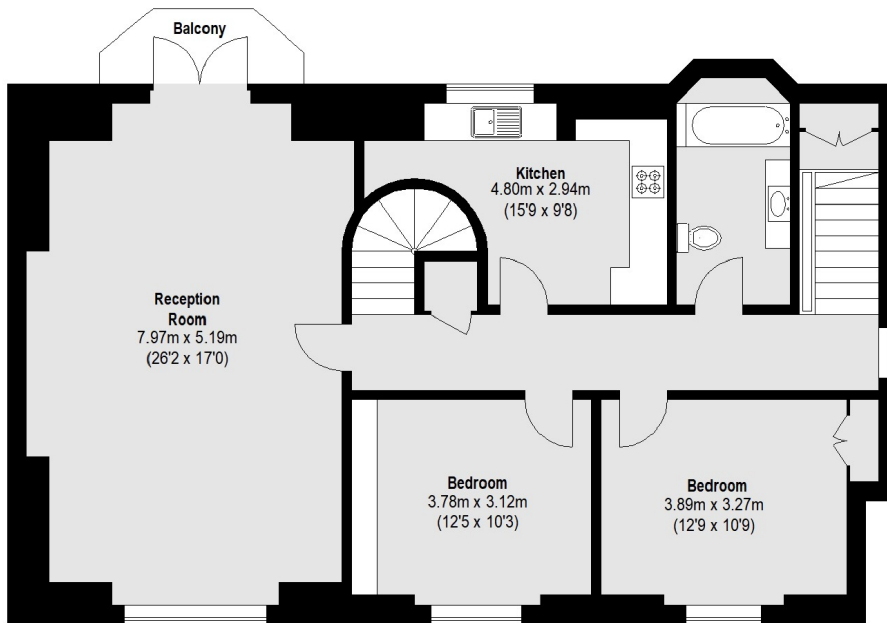
### Features

Four Bedrooms  
Two Bathrooms  
Split Level  
Private Balcony  
Bright  
Great Location

# Wedderburn Road, London, NW3

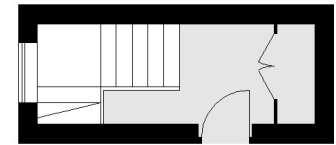


**Third Floor**



**Second Floor**

Total area (approx.): 156.35 sq. m (1683 Sq. ft)  
Balcony : 3.32 sq. m (36 Sq. ft)



**First Floor**